

THE COMPANY OF CHARTERED ARCHITECTS CHARITABLE TRUST FUND

NEWSLETTER SEPTEMBER 2024



THE ROLE OF THE CHARITABLE TRUST FUND OF THE WCCA

A prerequisite for the establishment of all livery companies, including the WCCA, is to set up and run a charitable trust fund to dispense grants and support various charitable causes, in particular those associated with the City of London.

All members of the WCCA are therefore requested to make regular contributions to the Company's Charitable Trust Fund to enable the Company to carry out its charitable obligations.

This moral obligation to contribute to the Trust Fund is stressed when aspiring members are interviewed for membership of the Company, before their applications are voted on by the Court, and also stressed by the Master when new members are subsequently admitted to the Company at Court meetings.

THE FUND

The Fund, originally set up in 1987, has grown through regular contributions by members and by generous bequests and gifts. The Fund must continue to grow to enable the Trustees to allocate more money each year for disbursement. The Fund's Trustees aim to achieve a split of approximately 50% of the fund's annual income as the target disbursement figure, 25% invested to grow the fund, and 25% to cover expenses.

The Trustees' budget for each year is made up of donations from Company members to the Charitable Trust Fund and from investment dividends.

The Trust Fund is invested and managed on a day-to-day basis by appointed Financial Consultants, and administered by appointed Trustees, who are all Company members.

OBJECTIVES

The Objectives of The Architect's Company Charitable Fund are based on, but not restricted to, three primary guidelines:

- The Advancement of Architecture and the Architectural Profession.
- The Support and Pursuance of Education - including outreach programmes.
- The Obligations as a Livery Company to support the City of London Corporation Charities, and its Charitable Activities.

THE COMPANY OF CHARTERED ARCHITECTS CHARITABLE TRUST FUND

SUPPORTING THE CITY OF LONDON CORPORATION CHARITIES AND ITS CHARITABLE ACTIVITIES.

THE LORD MAYOR'S APPEAL

The Charitable Trust supports The Lord Mayor's Appeal.

This Fund is for City employees, residents, their families and friends and those who live and work in neighbouring communities. The Lord Mayor's Appeal states that its aim is to find solutions to the most pressing societal issues in London and beyond.

The Lord Mayor's Appeal strategy works on four key pillars to create a City is Inclusive, Healthy, Skilled & Fair.



The Lord Mayor's Appeal Charity Partners are

- The Royal Foundation
- Homewards
- Mental Health Research
- National Numeracy



THE SHERIFFS' AND RECORDER'S FUND

The Charitable Trust supports The Sheriffs and Recorders' Fund.

Based at the Old Bailey, the Fund works closely with the Probation Service to ensure the grants reach those most in need.

Increasingly, this Fund collaborates with other charities to deliver education and training programmes focused on rehabilitation.



FLEXIBLE SUPPORT



COLLABORATIVE APPROACH



POSITIVE IMPACT ON SOCIETY

THE ORPINGTON SEA CADETS

The Charitable Trust supports The Orpington Sea Cadets.

The City of London Corporation has a connection with the Orpington Sea Cadets through the Worshipful Company of Chartered Architects (WCCA).



In 2012, the WCCA formed an association with the Orpington Sea Cadet Unit, known officially as the **Training Ship Whirlwind**.

This partnership is part of the broader initiative where livery companies of the City of London adopt units of the armed forces.



Past Master Stephen Wagstaffe presenting two crests to the Orpington Sea Cadets.

THE COMPANY OF CHARTERED ARCHITECTS CHARITABLE TRUST FUND

THE SUPPORT AND PURSUANCE OF EDUCATION

THE LIVERY SCHOOLS LINK

The Charitable Trust supports the Livery Schools Link.

This is an annual event at the Guildhall when we, as other Livery Companies do, provide awareness in career options to Year 9 – Year 11 students from local London secondary schools. Our popular stand provides interactive sessions in architecture.



Photos by kind courtesy of Jerry Tate



THE SIR JOHN SOANE MUSEUM



The Charitable Trust supports the Sir John Soane Museum in Community, On-site and Outreach Activities.

The Soane Youth Panel: a forum for young people aged 15 to 24.

Drop-in sessions: for Children & Young people:

Summer Workshops: for 7 to 16 year olds.

Communities and Access Work aimed at young people interested in architecture.

THE CITY SCHOOLS



Barbican.



The City of London.

The Charitable Trust supports the City Schools by awarding prizes to the following:

- City of London School for Girls, Barbican;
- City of London School (for Boys);
- City of London Freeman's School, Ashted;
- City of London Academy, Southwark.

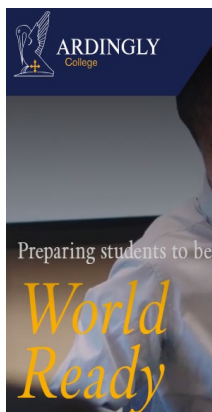


Ashted, Surrey.



Southwark, London.

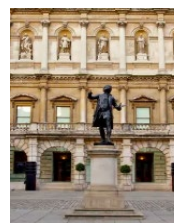
THE LAWRENCE KING AWARD



Through the generosity of Past Master Edward King Mrs Valerie King:

The Charitable Trust makes this award to a student/s at Ardingly College Sussex. The award is essentially for achievement in adversity, or for a student going on to study architecture.

THE ROYAL ACADEMY OF ARTS AttRAct AWARD



The Charitable Trust supports the RAA AttRAct Programme.

The Royal Academy AttRAct Project is for A-level students from schools in seven London Boroughs for careers and creative training.

THE COMPANY OF CHARTERED ARCHITECTS CHARITABLE TRUST FUND

SUPPORTING ARCHITECTURAL EDUCATION

Due to the generosity of members' legacies, The Charitable Trust provides support and awards to architectural students and apprentices:

THE DAVID HUBERT BURSARY

The David Hubert Bursary is an important fund managed by The Charitable Trust. The purpose of the fund is to support post-graduate students of the Company by making a contribution to their full time Part II studies in an accredited School of Architecture for either one year, or both years of the course. Applications made during the final year of study should be made by the first term.

The Bursary is also open to full time students of a London University who, upon applying, would be invited to become a student member of the Company. The Charitable Trust seeks to make awards as soon as practicable and therefore prospective applicants are encouraged to apply without delay.

David Hubert Bursary awardees 2023 - 2024



Oliver Dunn (2024).

University of Cambridge
MSt in Architecture (degree apprenticeship)
Apprentice: Chris Dyson Architects LLP.



Aaron Green (2024)

The London Metropolitan University,
School of Architecture, Art and Design
MArch Architecture (RIBA Part II)



Jason Boamah (2023)

University of East London.
Masters in Architecture
(RIBA PART2)

PATRICIA AND ALISTAIR STEWART FUND

The Patricia and Alistair Stewart Fund is for the benefit of both Students and Young members (below 38 years of age) to help encourage them to attend Company Events.

The Charitable Trust pays a significant percentage of the event fee. There is no deadline, awards are made upon request.



APPRENTICESHIP AWARDS

This award recognises academic and practical / vocational excellence.

Eligibility: Nominees must have completed at least two full years of study in either an equivalent RIBA Part I (Level 6), or RIBA Part II/III (Level 7) course and must be training to become an Architect via the Architectural Apprenticeships route.

Application details:
Deadline: September
Selection: October
Award: The following March by the Lord Mayor at Mansion House.

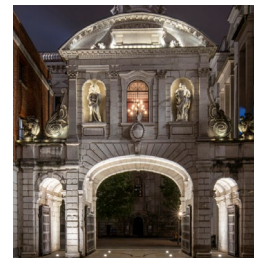


SOCIAL BEER & PIZZA EVENINGS

The Charitable Trust funds Social Pizza & Beer Evenings.

These are regular evening events held at Temple Bar with guest speakers from established architectural practices talking to architectural students.

Students have the opportunity to meet the speakers and gain insights into their career journey. Advice and help is always available at these sessions.



THE COMPANY OF CHARTERED ARCHITECTS CHARITABLE TRUST FUND

SUPPORTING ARCHITECTURAL EDUCATION

Due to the generosity of members' legacies, The Charitable Trust provides support and awards to architectural students and apprentices:

THE ASSAEL AWARD FOR TENACITY

The Assael Award is designed to recognize tenacity.

It is demonstrated by a student who has pursued a successful course of architectural study in spite of challenges, obstacles and personal difficulties or any other reason that shows remarkable resilience and tenacity in completing their educational studies.

The eligibility of this award is limited to students who are on course to graduate in Part 1 from an RIBA-accredited School of Architecture in Greater London.

The deadline for applications is end of August, and the awards are presented in September.

Shortlisted:

- Yaowen Zhang, UCL. BSc Architecture.
- Oscar Wood, UCL. BSc Architecture.
- Salima Begum, UCL. BSc Architecture.
- Efua Boakye, Kingston University.
- Anxhela Jaho, London South Bank University. BA Architecture.



Winner:
Gertrude Teca Nsamba

University of East London.
BSc (Hons) Architecture.



Runner-up:
Qing Tang

University of Greenwich.
BA Architecture.



Runner-up:
Jessica Tacuri

London Metropolitan University.
BA (Hons) Architecture.

THE STUART MURPHY TRAVEL AWARD

The aim of the Stuart Murphy Travel Award is to allow a talented student or team, undertaking Part II Architectural studies in a UK RIBA-accredited School, to travel abroad to conduct research on a topic of his/her/their choice that would contribute to the development of Architecture.

This scholarship supports architectural students in their post-graduate studies in Architecture, contributing to the development of their course work.

The scholarship is paid in two discretionary instalments: typically, 80% upon successful application, and 20% upon return and submission of a travel report to The Charitable Trust.

Applications deadline end of February of travel year.
Shortlisted applicants are interviewed in April/May,
Successful awards are made in June.



THE COMPANY OF CHARTERED ARCHITECTS CHARITABLE TRUST FUND

SUPPORTING ARCHITECTURAL EDUCATION

The Peter Luscombe Drawing Prize

Through a very generous legacy left by Past Master Peter Luscombe, Architect and Artist, The Charitable Trust awards prizes for the best free-hand drawing work at under-graduate and post-graduate levels.

This is a much sought-after award attracting entrants from several schools of architecture. In recent years, the Charitable Trust Trustees have created a category for the best computer-generated image.

Closing date for submissions is late June. Selection and award are in July. Presentation is at the Awards Dinner.

Feature: **Peter Luscombe**, Past Master, WCCA. Benefactor, the Peter Luscombe Drawing Prize.

Peter Luscombe was one of the founder members of the Company of Chartered Architects. He was elected to the Court in 1986, and served as Master for the year 1991 - 92. He was a long-term committee member of Essex Art Club and of many art organisations.

Though he worked mainly in the City of London, Peter trained as an architect in his birth-city of Plymouth. *"I was articled to an architect for three years when I was 16, which was a sort of apprenticeship. This method of training has long since been superseded by full-time courses in colleges and universities..."*

Of his illustrious art career, Peter said: *"Throughout my career, I produced illustrations both for my own designs and also for the various practices for which I worked. However, my interest in art has not been confined to work. It has been a hobby throughout my life,"* explained Peter in a *Wanstead Village Directory* article in 2017.



The Thames at Isleworth, Peter Luscombe:



Peter Luscombe, 1935 – 2020.



Peter Luscombe.



Tall ships at Greenwich, Peter



Sails, Peter Luscombe.

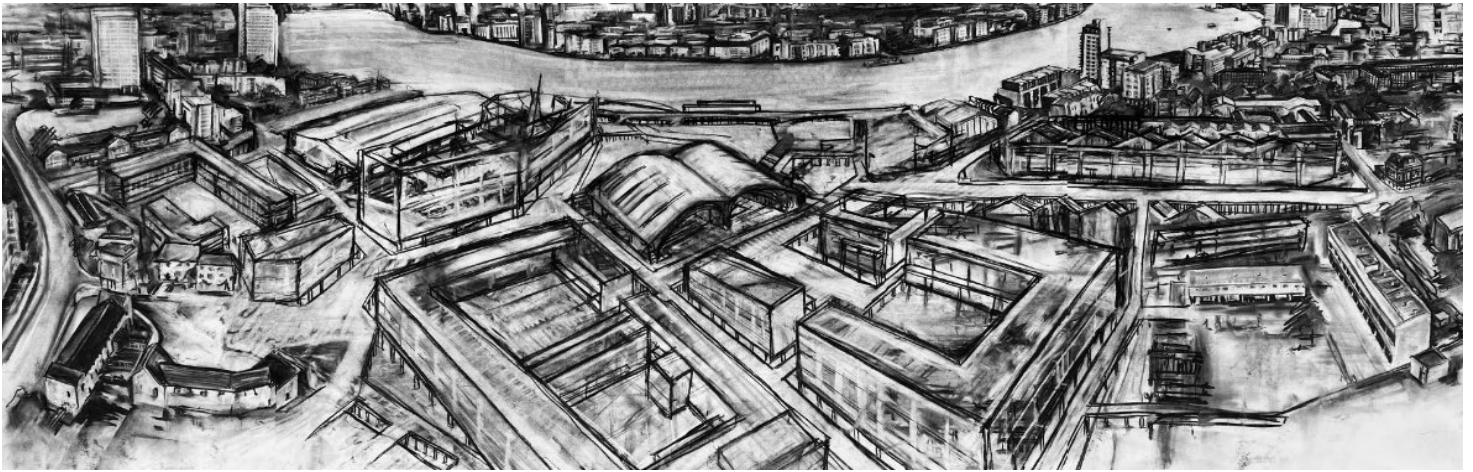
Peter Luscombe was a member of the Society of Maritime Artists, Chair of the City Heritage Society and a member of the Conservation Area Advisory committee in the City. He was also a devoted member of St Barnabas Church, and Church Warden at St Mary-le-Bow and St Faith Under St Paul's.

Peter Luscombe was also a liveryman of the Worshipful Company of Painter Stainers and a member of its Decorative and Fine Art Society of which he was past chairman.

Peter was a member of the Maritime Art Group (NMMAC), the Essex Art Club, of which he was vice chairman, and the Old Royal Naval College Art Club, formerly the National Maritime Museum Art Club of which he was past chairman. Peter exhibited regularly with all of these organisations and was awarded various prizes including Best Painting with the NMMAC and the Essex Art Club, and Best Painting and Best Body of Work with the Painters' Fine Art Society. Peter's medium was water-colour and acrylics. with a wide variety of subjects - still life, life, landscape and maritime.

THE COMPANY OF CHARTERED ARCHITECTS CHARITABLE TRUST FUND

THE SUPPORT AND PURSUANCE OF EDUCATION



Drawing on the City' Charcoal on paper size 0.841 x 3.00 metres long



Ella Daley

Winner

The London School of
Architecture.

**Peter Luscombe
Drawing Prize**

2024

Part II hand-drawn category



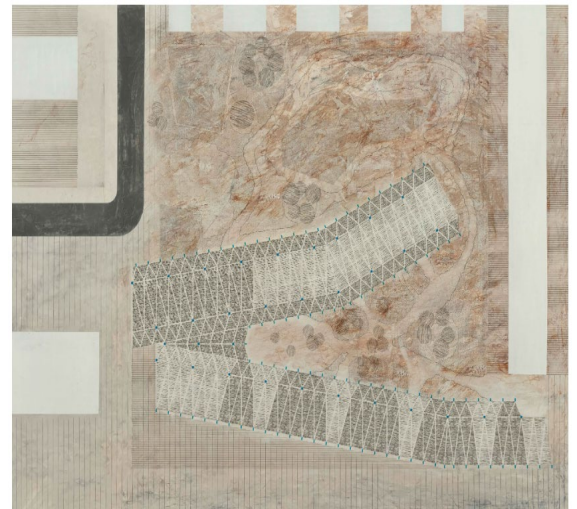
'The Hidden Geometry of Nature'.

Landscape plan in paint, raw earth
pigment, pencil and oil pastel.

Oliver Bingham

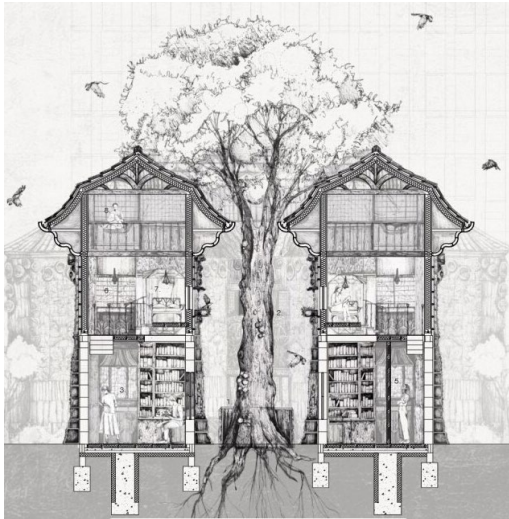
Runner-up

The London Metropolitan
University, School of
Architecture, Art and Design.



THE COMPANY OF CHARTERED ARCHITECTS CHARITABLE TRUST FUND

THE SUPPORT AND PURSUANCE OF EDUCATION



Allyah Mitra Nandy:
Winner
Part I Hand Drawn
The Bartlett School of
Architecture, UCL.



'The Macedonian Faculty Of Folklore.'

Storyboard

**Peter Luscombe
Drawing Prize**

2024

Part I hand-drawn category



'Depth of the Façade'.

Katarzyna Monika Szczegielniak
Runner-up
Part I Hand Drawn
University of East London

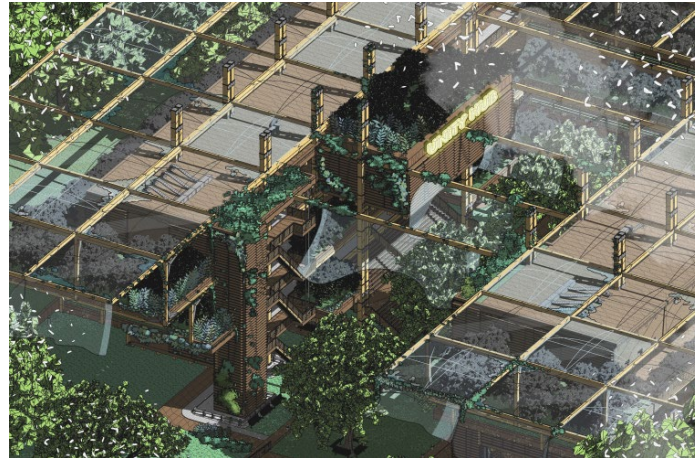
THE COMPANY OF CHARTERED ARCHITECTS CHARITABLE TRUST FUND

THE SUPPORT AND PURSUANCE OF EDUCATION



Dave Wong
Winner

MArch.
The Bartlett
School of
Architecture,
UCL.

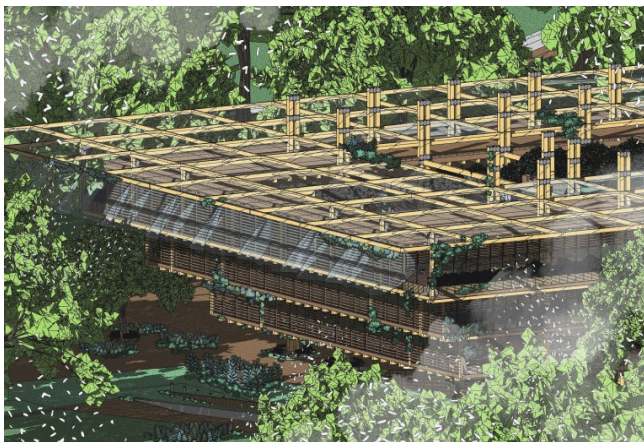


Unity Hub (Toa Payoh, Singapore)

Revitalising Toa Payoh's communal spirit, Unity Hub addresses the cultural erosion caused by rapid urbanisation and the 'tabula rasa' policies of Singapore's recent past. This project integrates with the 'Toa Payoh Redevelopment 2030' initiative, aiming to bridge generational divides and rekindle the 'Singaporean Kampong Spirit'.

The scheme merges contemporary architectural practices with the traditions of Singapore's pioneer generation.

Unity Hub is envisioned as an experiential, modular institution that dynamically supports the town's urban landscape while planning for a sustainable future, making it a beacon of community revitalisation that respects the past, engages the present, and enriches the communal fabric of Singapore.



Medium: Hybrid (Digital, Hand-Drawing, Tablet-Drawing).

Peter Luscombe Drawing Prize 2024 Part II digital drawing category



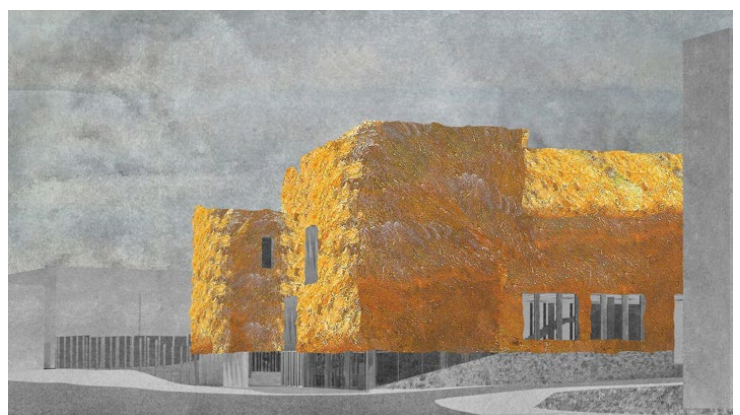
Aaron Green
Runner-up

MArch
Architecture,
London
Metropolitan
University.

New Camden Arts Centre.

The return to traditional crafts and the past to address the contemporary issues of climate change, resource scarcity and loss of skills is reinforced in the image, which digitally mimics a painting.

Inspired by Claude Monet's haystack series the image conveys how the straw of the thatch would catch the light and differentiate itself from its brick and modernist context on Finchley Road. The roughness of the thatched ricks painted by Monet are abstracted in this image as a desire for a domestic-civic monument whose sculptural mass becomes evermore tactile as it is approached.



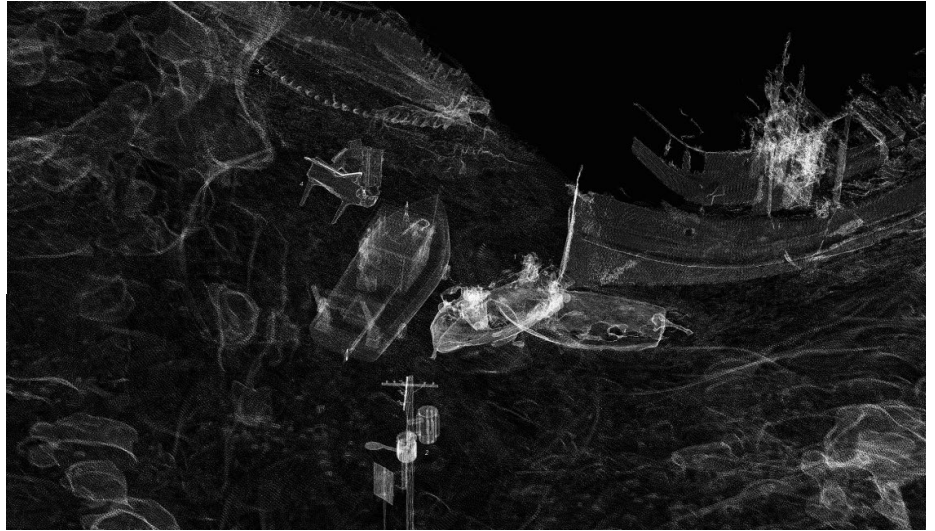
Medium: Rhino-7, V-Ray for Rhino and Adobe Photoshop

THE COMPANY OF CHARTERED ARCHITECTS CHARITABLE TRUST FUND

THE SUPPORT AND PURSUANCE OF EDUCATION



Renate Lurdesa Baumane
Winner:
Architectural
Association
School of
Architecture.



Parallel Presents

explores the theme of memory and its connection to the landscape on the Isle of Mull. Associations linked to this island are manifested in a parallel present, transforming the location into an ever-evolving repository of narratives. The various perceptions of this landscape are continuously reintegrated and analysed to create new mythologies, stories and histories.

Peter Luscombe Drawing Prize 2024 Part I digital drawing category

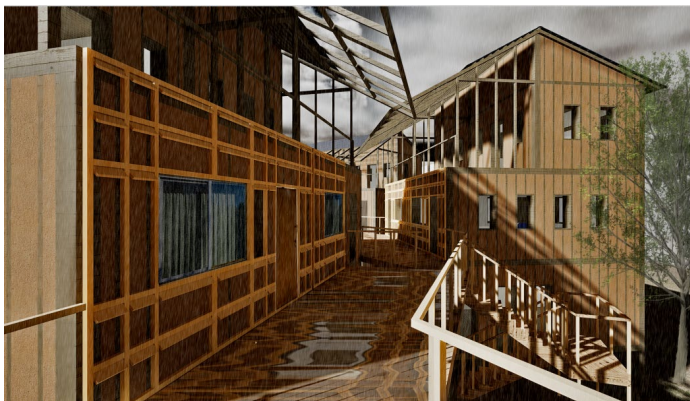


Yi Mun YU
Winner:

The Bartlett
School of
Architecture
UCL.

Layers of Care and Repair – Rainy Season, Repair Season:

Located
on the banks of
the River Roding
in Barking.



The project proposes affordable housing for families who are committed to maintaining their own homes and surrounding spaces. This project seeks to activate transition spaces between the areas of urban infrastructure and open spaces of the nature reserve below. The site transforms into an intermediate public space for pedestrians. The community of families living in a scattered array of affordable housing can maintain their own homes and communal areas by using shared tools and materials available in close proximity to the site. Expressing construction processes which respect the surrounding natural environment as best as possible, the project proposes a new form of self-maintaining architecture.

THE COMPANY OF CHARTERED ARCHITECTS CHARITABLE TRUST FUND

IN SUPPORT OF ARCHITECTS AND THE ARCHITECTURAL PROFESSION

Architects Benevolent Society

The Charitable Trust supports the Architects Benevolent Society.

ARCHITECTS
BENEVOLENT
SOCIETY



Money & Debt



Mental Health & Wellbeing



Housing advice



Employment



Physical Health & Disability



Resources

Awards by The Charitable Trust 2023-2024

Due to the generosity of legacies and members, awards/support are provided to the following:

- The Peter Luscombe Drawing Prize
- Patricia and Alastair Stewart Fund
- Lawrence King Award
- The David Hubert Bursary
- Assael Architecture award for Tenacity
- The Stuart Murphy Travel Award (to be re-started)
- The City Schools
- The Livery Schools Link
- The Lord Mayor's Appeal
- Sheriffs' & Recorder's Fund
- Master's Charitable Donations
- Architects Benevolent Society
- Royal Academy attRAct Award
- Orpington Sea Cadets
- The Apprenticeship Awards
- The Sir John Soane Museum
- Kingston School of Architecture

IMPORTANT MESSAGE from The Master, Giles Murphy.

*Livery Companies have a proud history and reputation for their philanthropy, and without any significant historical legacies in the Architects' Company, we are reliant primarily upon donations from our members to fulfil our charitable aims and contribute towards the charitable aims of the City. Even a **small regular donation** would be hugely appreciated.*



*If you wish to **contribute or increase** your current donation, please click this link [here](#), and insert the amount you wish to donate along with your details. If appropriate, please tick the **gift aid box** and complete the gift aid form and return it to the Charitable Trust Fund of The Company of Chartered Architects at adresse@msn.com*

*While **donations paid by an employer** are obviously welcome we are unable to claim gift aid relief on these, so if this is relevant to you perhaps you might consider paying the donation personally, if at all possible. Alternatively you might consider increasing the donation by 25% to compensate for the lack of gift aid. Thank you.*