



NHS Long Term Plan

BACCH-BACAPH Improving Services Series (B-BISS)

Purpose of the “Improving Services Series”.

- The ultimate aim is to deliver better services for children and families and so improve their outcomes.
- To develop and promote a series of tools (mini-mods) to enable/facilitate paediatricians to implement change to achieve better outcomes.
- To collect and share best practice through newsletter, journals, BACCH website.
- Potentially to develop “learning sets” to support paediatricians to enable change.

Content – learning objectives

- Brief recent history of CCH services
- Review of current concerns
- The NHS Long Term Plan
- Introduce BACCH-BACAPH mini-mods “Improving Services Series”

Brief history

- 2008, the global recession, profound economic austerity.
- 20% reduction of budgets over a five-year period.
- Population poverty levels increasing.
- Health and Social Care Act (April 2012).
 - a system based on competition rather than collaboration.
- More fragmented services.
- Persistent, possibly increasing, inequities – society and services.
- Changing morbidity/epidemiology – mental health, obesity, ASD.
- Changes in the public health organisation.
- COVID 19.

Reports +++ but impact?

- NSF and ECM.
- Change for Children.
- RCPCH Modelling the Future.
- Kennedy Reports (2).
- Munro Review.
- CoE Child Friendly Health Care.
- CYP Health Outcomes Forum.
- BACCH Family Friendly Framework.
- RCPCH/BACCH Covering all bases.
- Berwick Report - a promise to learn.

Current concerns (BACCH members)

- Workforce
 - Recruitment
 - Training – mental health, ICS/HIS - IHS??
- Systems
 - No clear leaders
 - No thinking time, overwhelmed by clinics
- Quality
 - No benchmarks
 - Too much variation
- Commissioning
 - Resource mismatch with workload
 - Service not understood

Concerns from RCPCH Invited Reviews

- Reconfiguration – hosting organisations.
- CCH not a priority within host organisations.
- Commissioning concerns.
- Clinician disengagement.
- Clinical overload.
- Lack of benchmarks.
- Poor information.
- Difficult recruitment.

2020 not what we expected!!!

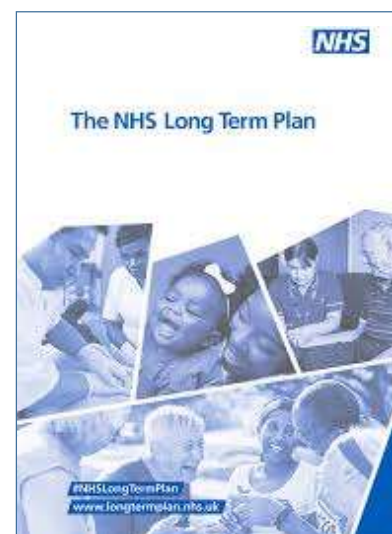
- NHS Long Term Plan – January 2019
- **COVID** – February 2020???
- Delivering NHS Net Zero – October 2020

Why is the NHS LTP important?

- Change of direction for NHS management – 10 year plan.
- Patient focus, but with clinicians in lead roles.
- Embeds quality improvement.
- Introduces Population Health Management.

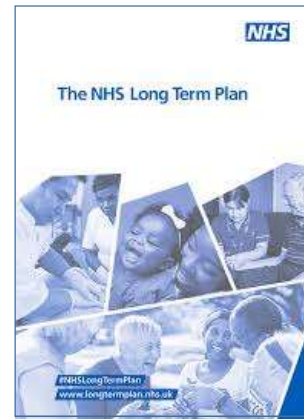
NHS Long Term Plan (1)

- redesign based on **care using pathways**
- embed systematic methods of **quality improvement** to **every** aspect of how the NHS operates.
- break down barriers between organisations, teams and funding streams **integration**
- **leadership** by clinicians accountable for care and efficient use of public money.



NHS Long Term Plan (2)

- role of the NHS includes **prevention**.
- **population health management** – clinical leads.
- **ethos cooperation**, not competition.
- integrate **community and primary care**.



Redesign care using pathways

- patient focused (**family focused**)
- **proactive prevention** (anticipation)
- all parts in place and working well together (**integrated**)
- meaningful measures, **feedback**, quality improvement



Break down barriers – integrated - synergy

- Community, hospital and specialist.
- Health, education and social care.
- Public, private and charitable.
- Commissioning, provision and regulation.

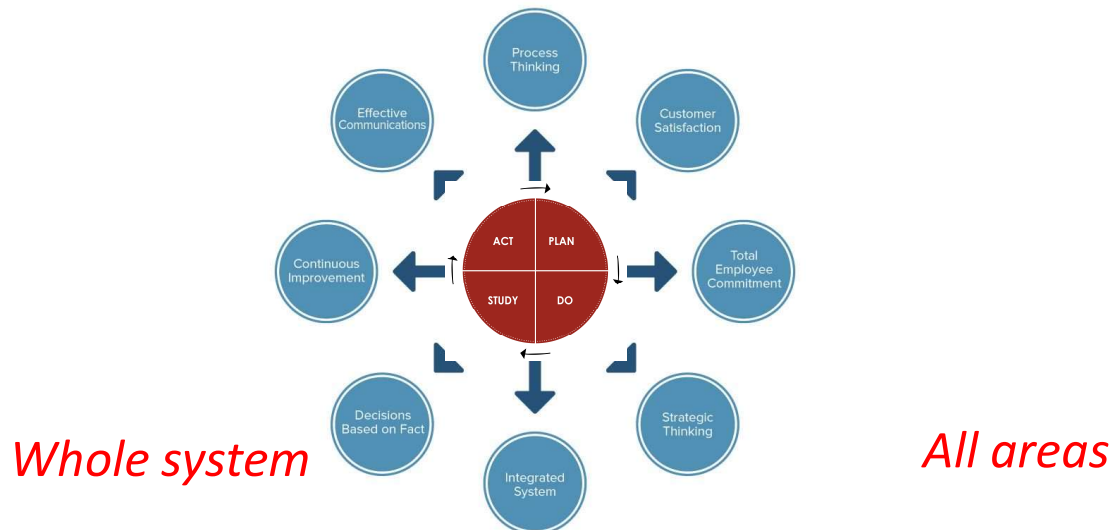


“triple integration of primary and specialist care, physical and mental health services and health with social care”.

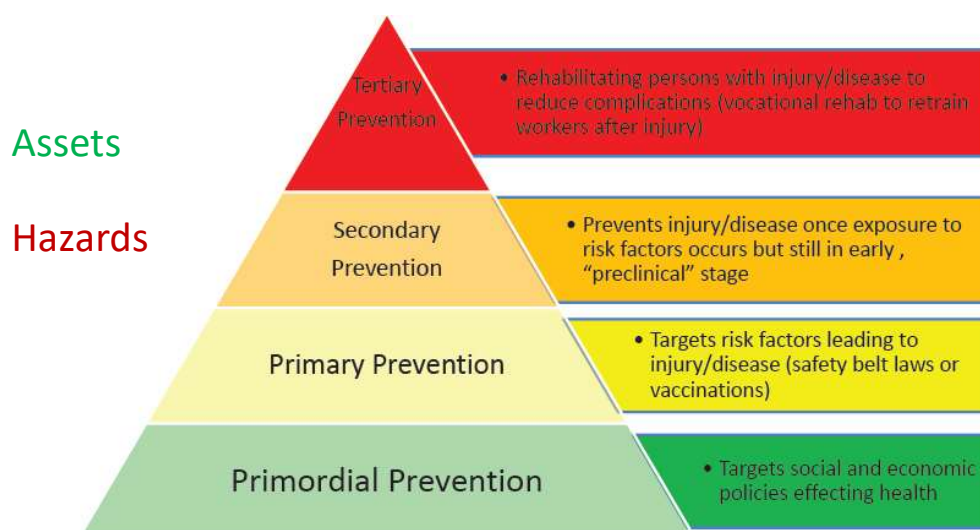
Leadership by clinicians and accountability



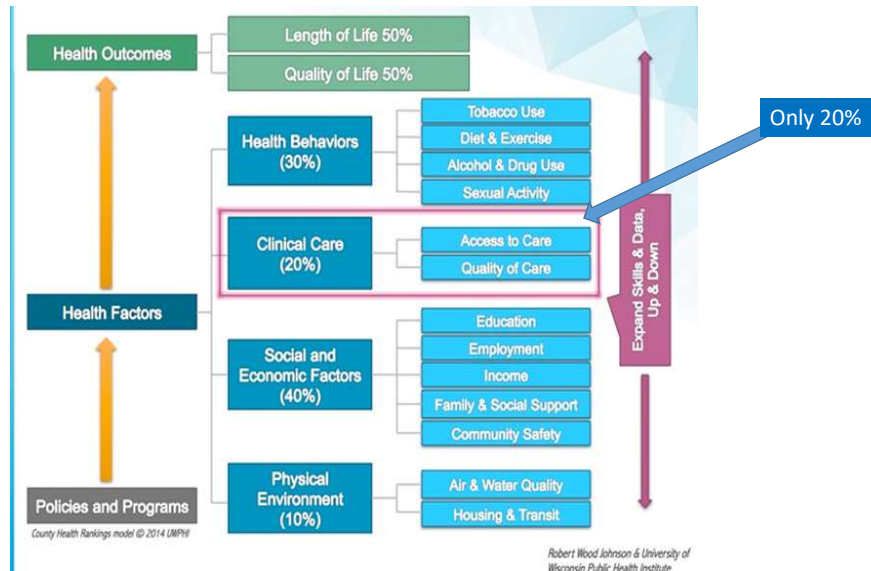
Embed systematic Quality Improvement



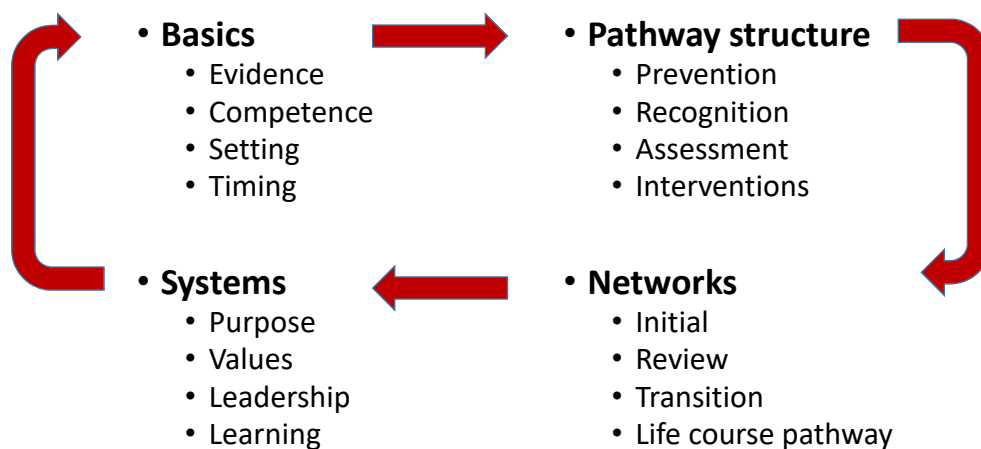
Prevention and inequalities – at every level



Population health management



BACCH Family Friendly structure



Challenges!

- Whole system values (children's rights).
- Integration of community services with “primary care”.
- Devolving resource allocation to networks (integrated).
- Making prevention/population health really happen!
-and become net-zero!

Mini-mod topics	Paper	PPP*	Webinar	Podcast
Introduction-where are we now? BACCH Plan.				
The NHS Long-Term Plan.				
Systems thinking and its application.				
Children’s rights and values.				
Understanding health and disease.				
Developing service pathways.				
Integration.				
Developing life course pathways.				
Population health management.				
Pathway measurement for quality improvement.				
Priority setting and options appraisal.				
Basic economics and health financing.				
Commissioning.				

Learning sets

Clinical

- ASD
- ADHD
- Obesity
- Safeguarding
- Audiology
- Screening tests
- Population prevention

Non-clinical

- Commissioning
- Quality Improvement.
- Leadership.
- Teamwork.
- Workforce planning.
- Developing networks.
- Metrics.

The potential roles that BACCH might develop

- role of regional coordinators
- developing examples of best practice
- library for pathways
- library for webinars
- moderated discussion platform
- more mini modules on key public health/management topics as they arise



British Association for
Child & Adolescent
Public Health

Thank you and questions

A Clean Health Bill of Health

Summary CLEAN concepts

C	Collaborative commissioners, providers regulators working together	Competing on quality based on whole pathways programmes of care	Compassionate caring, human and healing
L	Learning through innovation and improvement	Lasting Sustainable in every sense	Legitimate accountable
E	Effective for all stakeholders best evidence into practice	Equitable outcomes for all users	Efficient use of all resources
A	Affordable for all taxpayers and patients	Appropriate A balanced economy Appropriate priorities Knowing when to say no	Acceptable providing a good experience
N	National no unnecessary variations no postcode lottery	Negotiated with taxpayers, users and professionals, not imposed	Non-discriminatory valuing human rights