

KNOW YOUR UK FIREARMS DOCUMENTS

This year, there has been an increasing amount of fraudulent copies of firearm documents being used in an attempt to unlawfully acquire legally held firearms.

The National Crime Agency (NCA) need the help of firearms trade and certificate holders to prevent legal firearms being unknowingly transferred into unlawful possession and to protect the licensed firearms community from people who intend to defraud them.

You can do your bit by following these 3 simple steps:



1. ORIGINAL CERTIFICATE

Ensure you inspect the original certificate at every transaction.



2. INSPECTION

Please take an extra few moments to inspect the certificate and check for the security features highlighted over the page. Ensure you also look at the photo and verify it corresponds with the person handing you the certificate.



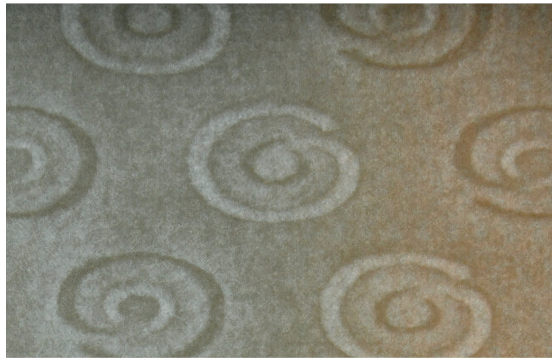
3. REPORT CONCERNS

If you have any concerns a certificate is not genuine, refuse the sale and contact your firearms licensing department. Alternatively, you can report concerns 100% anonymously to the charity Crimestoppers on 0800 555 111 or via www.crimestoppers-uk.org

HOW TO CHECK CERTIFICATES

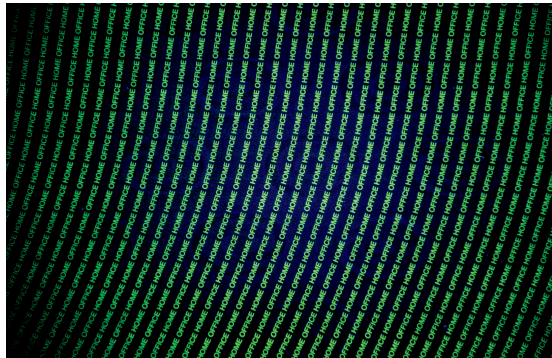
Firearm and Registered Firearms Dealer certificates should be printed on blue paper. Shotgun certificates should be printed on buff (beige) paper.

The security features are the same on all certificates. These are:



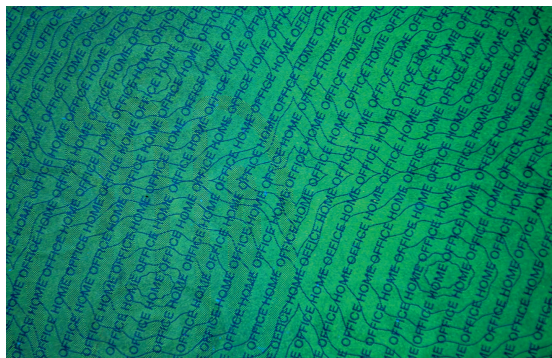
Watermark

- Hold paper to the light to validate
- You should see the design that looks like the "@" symbol
- NB. There is a different pattern on Police Scotland-issued air weapon certificates and all certificates issued by Police Service Northern Ireland. Visit the NCA website for more details.



Ultraviolet (UV) light check

- Use a UV torch suitable for banknote checking
- Look for "HOME OFFICE" fluoresce yellow throughout one side of the A4 sheet
- It will fluoresce differently on the reverse side of the paper



Reverse side UV check

- Turn the page over from the previous check
- Using a UV torch, look for blue lines forming a flower and star pattern, similar to contour lines seen on a map
- "HOME OFFICE" text overlaid on this pattern fluoresces blue

Follow the QR code to the NCA website for further information and to watch a video on how to inspect certificates.



<https://bit.ly/3Rl3r4A>