

Annual Report & Financial Statement

For the year that ended March 31st 2023



Thank you

Every staff member, volunteer, individual donor, community group, local business and charitable trust. You have played a crucial part in LinkAble's achievements this year.

To everyone who uses our services, thank you for choosing us.

Thank you for being who you are.

We love having you in the LinkAble community.



Contents

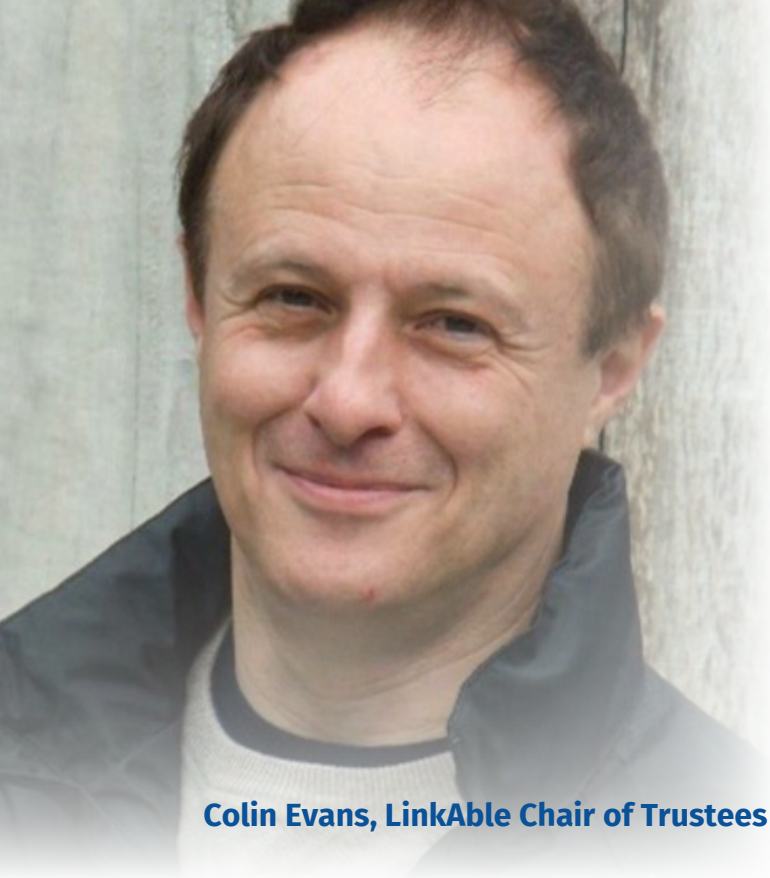
3. Q & A with LinkAble Chair of Trustees and CEO

Strategic Report 2022-2023

- 5. About LinkAble
- 7. Our impact
- 8. Our services
- 9. Why we exist
- 10. Our year in pictures
- 13. Providing lifelong support for Erin
- 14. Reflecting on our services
- 15. Team Link
- 17. Our fundraising
- 18. How we spend donations
- 19. Meet Howard
- 20. The future

Financial review

- 22. Financial Review
- 23. Reference and administrative details
- 24-25. Structure, Governance and Management
- 26. Statement of Trustees' Responsibilities
- 27. Independent examiner's report
- 28. Statement of financial activities
- 29. Balance sheet
- 30. Statement of cash flows
- 31-40. Notes to the Financial Statements for the Year Ended 31 March 2023



Colin Evans, LinkAble Chair of Trustees

Q&A - LinkAble Chair of Trustees and CEO

What impact has LinkAble made this year?

Colin - LinkAble has helped bring normality to those that rely on its services. People with learning disabilities were disproportionately affected by the pandemic, so focusing on service delivery as soon as it was safe was vital. This helped our beneficiaries to re-establish their routines.

Alison – We have also helped bring normality to our beneficiaries' families. By resuming our services, we have provided vital respite for exhausted parents, carers and families.

We've seen a surge in our under-18 waiting lists, so this year, we introduced Stay and Play, a new twice-monthly session that anyone can attend; you don't need to be registered. This way, we can support our community and children can start experiencing LinkAble before they are referred.

How has this year been for LinkAble?

Alison - The phrase Phoenix from the ashes springs to mind! We didn't know if COVID would continue or worsen at the start of this financial year. We've had to make some carefully considered decisions, which thankfully have really off.

As with many providers, we are feeling the pinch in our funding. This, although challenging, has been a catalyst to seek more diverse funding streams.

So, despite the difficulties at the start of the year, there have been exciting steps forward.

Colin - This certainly has been a year of COVID recovery for LinkAble. We strongly felt the impact of the virus in the first half of the year, with sickness affecting many staff and beneficiaries.

However, things have gradually returned to normal since November. The reintroduction of Mayhem, LinkAble's club night, was a significant marker that the tide had finally turned.

How do you think the cost-of-living crisis and public sector cuts have affected LinkAble beneficiaries?

Colin – The impact has been enormous. Many people have left their employment in the care sector to seek higher pay elsewhere, creating a substantial shortage of care workers. This directly affects our customers either in terms of a shortfall in care support hours from agencies (typically 30%) or for those on direct payments; the challenge is finding anyone to employ.

Adults with disabilities are amongst the poorest in society and many of the adults we support are finding it difficult to cope with rising supermarket bills.

How have those cuts affected LinkAble?

Alison – The most critical thing for us is not to pass on increased costs to our beneficiaries, who are already financially challenged. So we must now fundraise even more than before. It has increased the pressure; there's no denying it.

Additionally, we are looking for ways to be more efficient with our costs, like some of our building maintenance. A few local businesses donate their time to help maintain our building, and we plan on increasing these types of relationships.

How has LinkAble supported people during these difficult times?

Alison – We have expanded our services while continually fundraising to keep them as cost-effective as possible. In addition to the fun and social activities we are known for, our services now focus more on skills-based learning, such as cooking from scratch and travel training. We want to equip people with life skills to navigate uncertain times effectively.

Colin – We have become more outward-looking in our fundraising approach, seeking alternative sources since knowing our Surrey County Council contract will change in 2023. By diversifying our fundraising activities, we can increase both the level and certainty of funding.

What is your LinkAble highlight this year?

Colin – I have to come back to Mayhem and everything its return signifies, but aside from this, the refurbishment of our sensory room has been another highlight. We upgraded and added some enhanced sensory experiences to the room, which have been extremely well received.

Alison - My highlight has to be the work of our fantastic team. This year we created a new marketing & comms role which saw Beth Lyford join our team, and I'm thrilled with our marketing improvement. As we better tell our story, we're experiencing a significant increase in engagement.



Alison Keeley, LinkAble CEO

At the start of the year, Melissa Anders took on the Under 18 Service Manager role and excelled. Her enthusiasm and hands-on approach have revolutionised our under-18 services.

In March, we welcomed Ryan Lever as our new Fundraising Manager and Sandra Nixey as our new HR & People Manager. Both come with a wealth of experience and hit the ground running.

How is LinkAble entering 2023?

Colin – LinkAble has had such a positively charged mindset since COVID, so we're greatly looking forward to what the future will bring.

Alison – It feels like such a positive time for LinkAble, so I'm excited to see how this year plays out. New staff have brought a breath of fresh air and we are seeing the benefits of their new perspectives. Our fundraising has progressed and we're looking at new opportunities with different commissioners.

At the start of the year, we were in survival mode. Now that we're out the other side, we can focus on where we're heading - it's exciting! If I had to answer in three words, it would be 'onwards and upwards'.



About LinkAble



We are passionate about supporting people with learning disabilities and/or autism to live joyful and purpose-driven lives.

For over 30 years, LinkAble has been a welcoming community where every person is seen and celebrated as an individual.

We provide activities and experiences that people might not otherwise be able to access without the expert support of our specially trained staff. Our team brings to life the LinkAble belief that everyone deserves the opportunity to participate in meaningful activities, regardless of their needs.

With person-centred care at the heart of everything we do, we promise to support the unique needs, preferences and values of every person who uses our services.

We are here for people at every stage of their life, from five years old, with no upper age limit.

Our Vision

People with learning disabilities and autism achieve their full potential and are valued by society.

Our Mission

To provide life-long support to people of all ages with learning disabilities in Surrey, enabling them to live healthy, happy and more independent lives.



**A welcoming community
where you are seen and
celebrated as an individual.**

Our impact

“ People with additional needs are often not given enough credit. Like the rest of us they are all individual, all so different and they all have something worth contributing if you give them time.

I know that LinkAble truly understands this.

Sarah, mum to Lauren

”

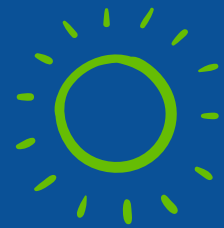
In 2022/23 we:



Delivered **19,428** hours of support that enriched the lives of people with learning disabilities.



Supported **178** people with learning disabilities to access fulfilling activities and experiences.



Facilitated **691** supported sessions and days out for people with learning disabilities.

"LinkAble is so important to us. It's not just a case of me needing the respite, Sam LOVES these clubs, the outings, and the people. I have another younger son who was diagnosed with ADHD in 2019, so he needs my time support too. When Sam is at LinkAble it gives me some time to dedicate to my other son, so the whole family benefits."

Suzy, mum to Sam

"I can honestly say I don't think I'd be the person I am today if I hadn't worked at LinkAble. I would 100% recommend it as a place to work. It's incredibly fulfilling and you will learn so many new skills. I really don't think there are many places where you will get an experience like you do working at LinkAble."

Lucy, former LinkAble staff

Our services

LinkAble is boldly looking to the future as we navigate the current challenging climate. We are working to amplify our message, ensuring every person in Woking and the surrounding area who can benefit from our services is aware of us.

By better demonstrating the value of our work, we will increase our engagement with the wider Woking community and reach more people we can support.

Our first step has been to revamp our offer. By splitting up our kids and teen services, we now have three distinct services to support people at every stage of their development.

In April 2023, we launched our rebranded services.

LinkAble services - a fresh new look

Our services offer people a place to feel safe and comfortable being themselves, with room to grow and develop at their own pace.

LinkAble No Limits (18+)

LinkAble No Limits is all about living life to the full.

Try fun new things, make friends and practice lifeskills.

Are you ready to choose your own adventure?

LinkAble Next Steps (12 - 18)

LinkAble Next Steps supports you on the journey to adulthood.

Learn new skills, build independence and explore your community.

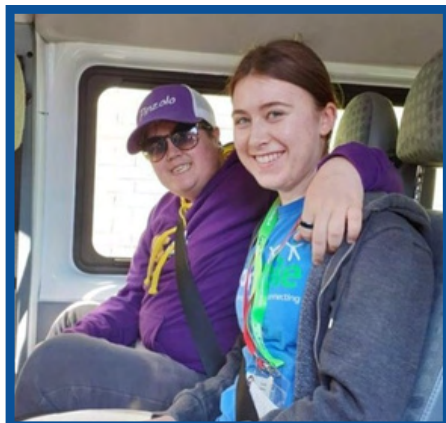
Are you excited to take the next steps?

LinkAble Play (5 - 11)

LinkAble Play - explore the world around you in a safe and supported environment.

Be yourself, have fun and be celebrated for who you are.

Let's play!



Why we exist



Social isolation is a devastating and sadly all too common problem for people with learning disabilities. Many of our beneficiaries can struggle to find a place in their community due to a lack of specialist support.

The children, teens and adults that we support have a variety of conditions, including autism, Down's syndrome and cerebral palsy. Some have complex needs and are in wheelchairs, needing one-to-one care, whereas others have more independence. Those we serve are among the most vulnerable and isolated in society. They are excluded from many events, activities and opportunities that most people take for granted.

We believe that all disabled people should have the same opportunity as their non-disabled peers to learn new skills, make friends and enjoy fun activities.

The current climate for people with learning disabilities

The current climate remains challenging, with so many people still facing barriers to inclusion and equal opportunities.

Key issues affecting people's day-to-day life:

Social Isolation

Research suggests that one in three young people with a learning disability spends less than one hour outside their home on a typical Saturday (Mencap, 2019). This can lead to loneliness and a lack of social connections, which can affect mental health and wellbeing.

Physical and mental health

When compared with the general population, research has shown that people with a learning disability were three to four times as likely to die from an avoidable ailment (NICE, 2019). Population-based estimates suggest that in the UK, 40% of adults with learning disabilities experience mental health problems at any point in time (NICE, 2016).

Stigma and discrimination

People with learning disabilities face negative attitudes and discrimination in many areas of life. In a survey by Scope in 2018, 85% of disabled people reported experiencing negative attitudes or behaviours from others because of their disability.

Employment

According to NHS Digital, in 2017/18, only 6% of adults with a learning disability (known to their local authority) were in paid employment in England, compared to 76% of people aged 16-64 in the general population (ONS, 2019).

Our year in pictures





LinkAble

THE CLUB NIGHT FOR
ADULTS WITH LEARNING
DISABILITIES IS BACK

MAYHEM



TheXX
Act
Ables
present

Beauty and the Beast

Buzz Theatre, Victoria Place, Town Quay, Woking, GU21 6YA
Sunday 11 December | Doors open 2.30pm, show at 3pm
Tickets £5
LinkAble registered charity 1119596



CNPFILLM FF1

23

What do you like
about LinkAble Erin?

“ It's my home
I love it.

”

Providing lifelong support for Erin

Erin, 20, has grown up with LinkAble, joining us at five years old. Mum, Bridget, told us about Erin's journey with us so far.

My daughter Erin has attended LinkAble for 15 years, using the children's, teens and now adult groups. This means LinkAble has been there at nearly every stage of her development.

Erin has a diagnosis of Down's Syndrome and Autism and so can be very sensitive, needing a lot of reassurance and support from me.

LinkAble is everything to us. It really is. We would be lost without it.

It's a place where Erin is valued and celebrated. All the things she brings to the table are celebrated and the things she finds difficult are supported with patience.

LinkAble has given Erin an identity away from her mum, which is vital - she knows people I don't know! When Erin was young, that didn't exist in her life, and I think it's so important for her independence and her identity.

When you have a child with special needs, you know everything about every part of their life, so for her to have some relationships that are just hers, that's priceless.

Music is a massive part of Erin's life; it's how she learned sentence structure. She always knows the latest music - the minute something drops, she is on it!

Before the pandemic, Erin was too young to attend Mayhem, LinkAble's club night for adults with learning disabilities.

Then after the pandemic, LinkAble had struggled to find a new venue for Mayhem, so when it finally came back at the end of 2022, Erin was over the moon. She screamed the house down!

Erin told me that she absolutely loved Mayhem and is already looking forward to the next one, saying, "It was great, so fun. The music was cool, and the DJs were good."



I don't really have the words to describe what linkable is to us. It's such a big part of our life.

If we were going to move house, one of the main factors in choosing a location would be how close we were to LinkAble.

That's how much it means to us.

Reflecting on our services

Cautious optimism, reflection and progress for our services.

Despite the challenges posed by the pandemic, we remain cautiously optimistic as we move past its impact on our groups, beneficiaries and staff.

Lessons learned

Reflection has been a key theme for us. We have looked back on the past few years and acknowledged the lessons learned. These lessons include our resilience and ability to adapt and the real-world impact our groups and staff have on people with learning disabilities, their families and carers.

We have made solid progress this year. As our groups rebuild their attendance and re-establish their routines, we're asking ourselves, "What's next?" Our services are ever-evolving, and we are excited about the opportunities that lie ahead.

Looking to the future

As we look towards the next year and beyond, we are reaching out to everyone we support. This includes our beneficiaries, their families, carers, and support networks. We want to hear their feedback and ideas about how we can improve our services. We believe that by working together, we can innovate and ensure our services are user-led and never prescriptive.

We know the importance of our work and its impact on those we support. We believe there is always an opportunity to refine, improve, and be even better at what we do. This ethos lies at the heart of our service offer, now and as we move into our exciting future.

Service highlights



Over 18

- 88 people supported across our term-time and holiday schemes.
- 7,300 hours of support delivered by the end of December 2022.
- Launch of DanceAbles, LinkAble's new dance group, providing adults with a platform to express themselves physically through creative dance.
- The long-awaited return of Mayhem, LinkAble's club night for adults with learning disabilities.
- A new professional performance space for our drama group, The ActAbles to perform in. We are now using Buzz Theatre in Woking.

Under 18

- Melissa Anders joined as U18s Services Manager, quickly leading a successful summer scheme.
- Delivered 3,370 hours to nearly 90 families over the five weeks of summer scheme.
- Successfully reapplied for short breaks funding with Surrey County Council and secured a new contract for 2023 onwards to fund essential groups for children and young people.
- A revamp of Saturday sessions to include a wider variety of activities, better meeting the range of needs that we support. Glowing feedback from those we support and our staff has included that the sessions are more fun, engaging and inclusive.

Our dedicated staff and volunteers truly are the beating heart of LinkAble.

They are passionately committed to supporting those that use our services to live joyful and purpose-driven lives.

We are extremely proud to provide many young people (16-25 years old) with their first voluntary or paid position, often acting as a catalyst for many of Woking's youth to pursue careers in teaching, care or the medical sector. Lucy Morris, who worked for us for five years and is now working for an eating disorder clinic as a Healthcare Assistant, is a prime example of this.



"I worked at LinkAble for five years from the age of 16. I was also LinkAble's first-ever DofE volunteer, so I've been involved with the organisation since I was 14.

I started out as a sessional worker for the first couple of years. Then I was promoted to a deputy, then group leader. So, as well as the many useful skills I learnt, I can also show career progression.

Like myself, many people who work at LinkAble want to study things like psychology, nursing, paramedics, or medicine at Uni.

I feel like for that demographic, LinkAble provides such good experience and it's also brilliant for your personal statement and CV. I'm now 21 and alongside working at LinkAble, I've just finished University, where I was studying psychology. I've just recently started working for an eating disorder clinic as a healthcare assistant. There are a number of people there who have autism, which is an area I'm really interested in and I have a lot of experience with due to my time at LinkAble. This role is the next step in my career before I start applying for psychology jobs."

The journey of our Under 18 Service Manager, Melissa Anders, is another notable LinkAble staff achievement.

"I have worked for LinkAble for over five years. In September 2017, I joined as a group sessional worker with the under-18 groups. Within two years, I progressed to Group Deputy and then to Group Leader.

In June 2022, I joined the office team as the Under-18s Service Manager, which I feel at 21 is a fantastic achievement! I strive to help every child and young person find sanctuary in LinkAble. This role enables me to make this a reality. I use the knowledge I have gained from my past experience to ensure the under-18 groups run smoothly and safely whilst being fun and inclusive.



My focus has been on improving the experience for our children, young people and staff by collecting feedback on our services and implementing improvements. This enables LinkAble to exercise a user-led approach, which is a value we see as non-negotiable. This approach allows me to continuously innovate, ensuring that our services meet our young people's needs now and as they may change in the future."

New staff

LinkAble welcomed Beth Lyford as Marketing & Communications Manager, Ryan Lever as Trusts & Grants Fundraising Manager, and Sandra Nixey as Human Resources People Manager to the team this year. All have brought innovative ideas to LinkAble and wasted no time in acting on them!

A flurry of new trustees has seen Neil Murrin, Daniel Stephens-White, Charlie Donaldson, Nneka Ochonogor and Stewart Wilkinson join the team. They bring a wide range of expertise, including HR, law and finance.

Volunteering

Our incredible volunteers have provided over 300 hours of support at LinkAble sessions. **We simply could not operate without their vital support.**



Alan Peever

I started with Linkable in the summer of 2022, so I've been part of the team approaching a year now. I am a volunteer minibus driver and help with trips for adults and under-18s.

I feel it is good to help voluntary causes whenever possible. I enjoy helping in this small way at LinkAble as it is wonderful to see the beneficiaries enjoy themselves and hear them chatting about their trips!

The LinkAble team are also very friendly, welcoming and professional.

Sue Billingham

I've volunteered at LinkAble for about two years with the Skills Build group on Tuesdays and the holiday schemes for adults.

I think volunteering within your community is so important. If you're fortunate enough to have the luxury of spare time, it's so beneficial to help smaller charities like LinkAble.

I love my time at LinkAble. I enjoy building relationships with the people using the service and seeing the enrichment LinkAble brings to their lives, with a lot of fun, laughter and support along the way.

It's been a lovely addition to my life!



Our fundraising

Despite a challenging year, LinkAble has seen many funding successes.

The Trusts and Grants on which we rely have continued to fund much of our work. However, we have seen an increase in more diverse funding, which we intend to grow over the coming years.

Charity of the year

We were delighted to have been chosen as the Mayor of Woking's charity of the year. Cllr Saj Hussain has helped to raise funds and the profile of LinkAble this year, for which we are extremely grateful.

Speaking about his reason for choosing the charity, Cllr Hussain said,

“Having had a child with additional needs, I know how much extra support is required. LinkAble gives people with learning difficulties the opportunity to build confidence and develop their social skills in a safe environment so that they can enjoy life.”

As the Mayor's chosen charity, we received funds from a Woking FC bucket collection, Woking Lions and The Rotary Club of Woking.

Corporate support

This year has seen continued support from local corporates. Squire's Garden Centre in Woking chose LinkAble as their charity of the year, raising £1,236.51 through a 'Quiz and Curry' night and Christmas fundraising activities.

We were also delighted to deliver our disability awareness session to Squire's staff, helping to make Woking a more inclusive place.

Corporate volunteers

LinkAble has saved significant money on building maintenance through the kind support of corporate volunteers.



This year, we welcomed volunteers from Surrey County Council, Talogy, FE Fund and Signmode, who helped with the maintenance of our indoor and outdoor facilities, enabling us to direct funds elsewhere.

Our highlight this year has to be the wonderful individuals who chose to raise funds for us.

A huge thank you to these superstars who raised an incredible £7,712 between them!

- LinkAble Trustee, Richard Fitzherbert, along with his wife Anne did a sponsored month of running, raised £1,552.
- Sarah Osprey who ran the Surrey Half Marathon, raised £1,060 (her employer also matched this!).
- LinkAble Trustee, Nigel Himsworth for his generous donation of £5,000.
- The Directors of Pharmabase Marketing's Christmas card fundraiser, which raised £100.

Thank you to:

- The Ottershaw Night Owls for a huge donation of baby wipes and for selecting LinkAble as their chosen charity for the next two years.

None of what we do at LinkAble would be possible without the generosity of the individuals, community groups, local businesses and charitable trusts who have either fundraised or made donations over the last 12 months.

Thank you.

How we spend donations

£5 buys materials to run themed sessions.

Pancake flipping or pumpkin carving, anyone? Or perhaps a mask to be a superhero for the day!

£10 pays for items like shaving foam and jelly for our fun messy play sessions for kids.

These sessions enable multiple children to enjoy a sensory and engaging experience in a safe and supported environment.

£25 covers the cost of one adult attending a 'Tasty Days' cookery session.

Learn about healthy eating whilst making a meal to share with other adults in the group. Tasty Days improves confidence, reduces social isolation and encourages healthy living.

£50 funds the monthly maintenance of the LinkAble hoist.

It allows staff to safely support and transfer service users with additional health and mobility needs to access our sensory and soft play rooms. Our hoist keeps our sessions inclusive, enabling everyone to access all our facilities.

£100 to £120 pays for the entry of up to 10 people to local attractions.

To places like soft play, theme parks, adventure farms and outdoor activity centres. LinkAble's off-site activities offer many of our service users the opportunity to enjoy days out that they may otherwise not be able to enjoy without the support of our specially trained staff.



Meet Howard

Mum Joy, told us why LinkAble is such a vital service for her son Howard.

My son Howard is five years old, and he started coming to LinkAble nearly a year ago. Howard is autistic and non-verbal, and he attends a special needs school.

Like many parents, my husband and I don't have enough leave from work between us to cover the school holidays. But unlike most parents, we can't use a mainstream holiday club or childminder for childcare, as they cannot meet Howard's needs.

If we didn't have somewhere like LinkAble to take care of Howard, then I don't know how we would cover childcare in the school holidays – I would probably have to leave my job so that I could look after him.

Although Howard can't talk or tell me what he thinks of LinkAble when I tell him it's time to go to LinkAble, he always gets into the car happily and is happy to go in, so I'm confident that he feels happy and safe there. When I drop him off and pick him up, the staff always seem very enthusiastic and they tell me what Howard has been up to.

I have been impressed at how much effort is made to make the sessions interesting for the children, with both on-site activities and trips off-site, so we feel that it's a place that's good for Howard's development and not just somewhere for him to go when we're busy with work.

Because of this, Howard has started attending some of the Saturday sessions as well as the school holiday ones. This allows us to take our daughter out to some nice places that we would find difficult to take Howard to.



It's really valuable for us to have some more relaxed time with our daughter, and we don't feel guilty about taking Howard to LinkAble because we know that he will be well looked after and there will be lots of activities for him.

We made a donation to LinkAble, as we only pay £29 a day, and I'm sure it must cost more than that to run. I feel that since we are using the service, we should give back a bit if we can.

Being a parent of a special needs child is very demanding and challenging. It's a great encouragement to know that LinkAble is making an effort to support us.

The future

We have ambitious plans for the future.

Every day, we see how, with the right support, people with learning disabilities can live joyful and purpose-driven lives.

How do we expand on this?

We want the people using our services to have the best possible experience in the place that they call home.

Our first step is to increase our relationships with corporates across Woking by supporting them in realising their Corporate Social Responsibility targets. By enabling businesses to help local disabled people, we move closer to a cohesive community where people with additional needs feel more supported.

Fine-tuning our services will also play a key role in realising our expansion. We must be ambitious beyond our current achievements, always aspiring to build upon our successes and learn from our mistakes. Key to this is an ongoing dialogue with those we support and our staff who support them.

So, across the year, we will complete a full survey of our families that will inform our service developments. Our future funding applications will focus on supporting our service expansion to ensure we can properly respond to our survey results.

Finally, we will implement groups for our new contract with Surrey County Council, strengthening our relationship with the council and broadening that partnership. We strive to include new groups or services to meet the needs of people who don't yet benefit from LinkAble.



**"LinkAble is
everything to us,
it really is.**

**We would be lost
without it."**

Bridget, mum to LinkAble attendee, Erin.



Financial Review



The Statement of Financial Activities for the year ended 31st March 2023 shows a deficit of £15,321, consisting of (£52,595) unrestricted deficit and £37,274 restricted surplus.

Income

Total income increased by 14% during the year to £519,413 (£455,568). During 2022-23, LinkAble groups were finally able to return to service provision in line with pre-Covid levels, with increased attendance at groups and greater choice of activities throughout the year. Income from Charitable activities has increased by 8.7% to £301,661 (£277,633).

Income from donations and other fundraising activities has risen by 22% to £216,219 (£177,078), which is due to increased income from Trusts and Foundations, and partly as LinkAble was nominated Mayoral Charity of the Year in Woking.

Expenditure

Total expenditure increased by 18% during the year to £534,734 (£451,477). As LinkAble has been able to operate normal service provision throughout the year, costs of running groups have increased accordingly. This increase in cost also reflects the increasing level of support required by many of the children and young people attending groups. Staff costs have risen by 18% to £422,560 (£358,469), which reflects the increase in minimum wage as well as changes to the structure of the management team, enabling future growth.

Reserves

Reserves are held to ensure the continuity of service provision as well as enabling LinkAble to take advantage of opportunities when they arise. On 31st March 2023, LinkAble's reserves were £208,603 (£223,924), of which £165,026 (£217,621) was unrestricted. Of this, £16,202 is designated to the Fixed Asset Reserve.

LinkAble is committed to growing its service provision beyond pre-Covid levels and has put measures in place to aide this, which will result in increased cost and a greater need for strong reserves going forward.

LinkAble's reserves policy is to maintain free reserves of between 3 to 6 months operating costs to allow for short-term fluctuations in cash requirements. The current level of free reserves is £148,824, which represents approximately 3 months operating costs and is at the required level set by the policy.

The trustees review the reserves policy annually to ensure it is set at the appropriate level.

Reference and administrative details

Legal Charity Name:

LinkAble Woking Limited

Registered Charity Number:

1119596

Registered Company Number:

06056940

Registered Office:

The Link, 2 Board School Road, Woking, Surrey, GU21 5HE

Directors and Trustees

Colin Evans (Chair)	Appointed as Chair 11 May 2022
Charles Donaldson	Appointed 11 May 2022
Nigel Himsworth	
Neil Murrin	Appointed 22 February 2023
Nneka Ochonogor	Appointed 11 May 2022
Rachel Pearce	
Daniel Stephens-White	Appointed 22 February 2023
Allan Whitehall	
Stewart Wilkinson	Appointed 26 October 2022
Sarah Ball	Resigned 6 January 2023
Stuart Best	Resigned 23 June 2022
Richard Fitzherbert	Resigned 24 May 2023
Ramani Langley	Resigned 6 August 2022
Alexander Reddock	Resigned 11 May 2022

Senior Leadership

CEO	Alison Keeley
Head of Services	Jamie Pleavin-Evans
Head of Finance	Sasha Newell

Advisors

Independent Examiner

JS2 Limited, One Crown Square, Church Street East, Woking, Surrey, GU21 6HR

Bankers

- HSBC Bank, 6 Commercial Way, Woking, Surrey, GU21 6EZ
- Aldermore Bank, 1st floor, Block B Western House, Lynch Wood, Peterborough, PE2 6FZ
- Monmouthshire Building Society, Monmouthshire House, John Frost Square, Newport, South Wales, NP20 1PX

Structure, Governance and Management

Governing Document

LinkAble is a registered charity and a company limited by guarantee governed by its Memorandum and Articles of Association which establishes its objects, powers and governing rules. We are regulated by the Charity Commission and adhere to its guidance regarding effective governance.

Governance Structure

LinkAble has a Board of up to 15 Trustees, although we are currently operating with 9. The Trustee Board meets periodically through the year to set LinkAble's strategy and discuss the progress of previously approved projects. The Trustee Board delegates work to 7 committees - Finance, People, Property, Fundraising, Marketing, Risk & Governance and Programmes.

The day-to-day management of the organisation is carried out by the CEO who is accountable to the Trustees, who carry ultimate legal responsibility for the Charity.

Recruitment and Appointment of Trustees

LinkAble has a formal recruitment policy and appointment process under which potential candidates are considered and selected. New Trustees are identified in a number of ways including advertising and targeted recruitment. The Trustee Board regularly reviews its collective skills and experience against the needs of the Charity's business to ensure that it has appropriate expertise to enable the Charity to deliver its objectives.

Trustee Induction and Training

LinkAble has a programme of induction and training for Trustees that is set out in the Trustee Recruitment and Appointment Policy.

Structure, Governance and Management

Risk Management

The trustees take seriously their responsibility for ensuring the safe, secure and professional operation of the Charity. With the assistance of the management team, we maintain and regularly review a risk register, which identifies the key risks to which the charity is or could be exposed. The risk register is based on the Charity Commission's template and guidance. The trustees consider that the principal challenges faced by LinkAble and the associated risks are the need to:

- Continue to support adults and children with learning disabilities
- Operate within set budgets
- Generate sufficient income to support the cost of service delivery thus minimising the cost to service users
- Return to pre-Covid 19 service delivery levels and beyond

LinkAble has established measures to control and mitigate the likelihood and impact of risks identified in the risk register which is regularly reviewed by committees and the Board. Operational risks are managed through appropriate policies and training, and form part of a regular report to the Trustees from the CEO. Financial risk is managed through policies, budgeting, and reporting; in addition, the financial risks and implications of any proposal are carefully reviewed before a decision is reached.

Although supported by the CEO and the Risk and Governance committee, final responsibility for the management of risk rests with the Trustee Board.

Statement of Trustees' Responsibilities


The Trustees (who are also the Directors of LinkAble Woking Limited for the purposes of company law) are responsible for preparing the financial statements in accordance with applicable law and United Kingdom Generally Accepted Accounting Practice.

Company law requires the Trustees to prepare financial statements for each financial year which give a true and fair view of the state of affairs of the charitable company and of the incoming resources and application of resources, including the income and expenditure of the charitable company for that period. In preparing those financial statements, the Trustees are required to:

- select suitable accounting policies and then apply them consistently;
- observe the methods and principles in the Charity Statement of Recommended Practice (SORP);
- make judgments and estimates that are reasonable and prudent;
- prepare the financial statements on the going concern basis unless it is inappropriate to presume that the charitable company will continue in business.

The Trustees are responsible for keeping proper accounting records which disclose with reasonable accuracy at any time the financial position of the charitable company and to enable them to ensure that the financial statements comply with the Companies Act 2006. They are also responsible for safeguarding the assets of the charitable company and hence for taking reasonable steps for the prevention and detection of frauds and other irregularities

ON BEHALF OF THE BOARD OF TRUSTEES



..... Date: 21/12/2023

Colin Evans, Chair of the Board of Trustees of LinkAble

INDEPENDENT EXAMINER'S REPORT TO THE TRUSTEES OF LINKABLE WOKING LIMITED FOR THE YEAR ENDED 31 MARCH 2023

I report to the charity Trustees on my examination of the accounts of the Company for the Year Ended 31 March 2023, as set out on pages 28-40.

Responsibilities and basis of report

As the charity's Trustees of the Company (who are also the directors of the company for the purposes of company law), you are responsible for the preparation of the accounts in accordance with the requirements of the Companies Act 2006 ("the 2006 Act").

Having satisfied myself that the accounts of the Company are not required to be audited for this year under Part 16 of the 2006 Act and are eligible for independent examination, I report in respect of my examination of your charity's accounts as carried out under section 145 of the Charities Act 2011 ("the 2011 Act"). In carrying out my examination, I have followed the Directions given by the Charity Commission (under section 145(5)(b) of the 2011 Act).

This report is made solely to the charity's Trustees, as a body. My work has been undertaken so that I might state to the charity's Trustees those matters which I am required to state to them in an independent examiner's report and for no other purpose. To the fullest extent permitted by law, I do not accept or assume responsibility to any party other than the charity and charity's Trustees as a body, for my examination, for this report, or for the statement I have given below.

Independent examiner's statement

The charity's gross income exceeded £250,000 and I am qualified to undertake the examination by being a qualified member of The Institute of Chartered Accountants in England and Wales.

I have completed my examination. I confirm that no material matters have come to my attention which gives me cause to believe that:

- accounting records were not kept in accordance with section 386 of the Companies Act 2006; or
- the accounts do not accord with such records; or
- the accounts do not comply with relevant accounting requirements under section 396 of the Companies Act 2006 other than any requirement that the accounts give a 'true and fair' view which is not a matter considered as part of an independent examination; or the accounts have not been prepared in accordance with the Charities SORP (FRS102).

I have no concerns and have come across no other matters in connection with the examination to which attention should be drawn in this report in order to enable a proper understanding of the accounts to be reached.



JOHN SPEED FCA FCIE

JS2 Limited, One Crown Square, Woking, Surrey, GU21 6HR

Date: 21 December 2023

LINKABLE WOKING LIMITED

STATEMENT OF FINANCIAL ACTIVITIES (including the Income and Expenditure Account) FOR THE YEAR ENDED 31 MARCH 2023

	Note	Unrestricted Funds 2023 £	Restricted Funds 2023 £	Total Funds 2023 £	Total Funds 2022 £
INCOME FROM					
Donations and legacies	2	53,467	129,055	182,522	170,091
Charitable activities	2	301,661	-	301,661	277,633
Other trading activities					
- Fundraising events		33,697	-	33,697	6,987
Interest		1,533	-	1,533	857
TOTAL INCOME		390,358	129,055	519,413	455,568
EXPENDITURE ON					
Raising funds	3	44,101	-	44,101	42,704
Charitable activities					
- Adult services	3	118,953	53,403	172,356	172,092
- Children's services	3	279,899	38,378	318,277	236,681
TOTAL EXPENDITURE		442,953	91,781	534,734	451,477
Net income and net movement in funds		(52,595)	37,274	(15,321)	4,091
Fund balances brought forward		217,621	6,303	223,924	219,833
Fund balances carried forward		165,026	43,577	208,603	223,924

The Charitable Company's income and expenditure all relate to continuing operations.

The Charitable Company has no recognised gains or losses other than shown above.

The accompanying notes form part of these financial statements.

LINKABLE WOKING LIMITED**Company number: 06056940****BALANCE SHEET****AS AT 31 MARCH 2023**

		2023		2022	
	Not e	£	£	£	£
Fixed Assets					
Tangible assets			16,202		-
Current Assets					
Debtors	8	35,400		15,699	
Cash at bank and in hand		176,548		234,297	
		<u>211,948</u>		<u>249,996</u>	
Creditors: Amounts falling due within one year	9	<u>(19,547)</u>		<u>(26,072)</u>	
Net Current Assets			192,401		223,924
Total Assets less Current Liabilities			<u>208,603</u>		<u>223,924</u>
Net assets			<u>208,603</u>		<u>223,924</u>
Funds					
Unrestricted Funds					
General funds	10		148,824		177,621
Designated funds	10		16,202		40,000
Restricted Funds	10		43,577		6,303
			<u>208,603</u>		<u>223,924</u>

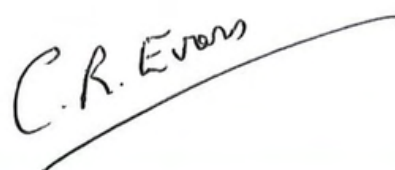
For the year ending 31 March 2023 the Company was entitled to exemption from audit under section 477 of the Companies Act 2006 relating to small companies.

The members have not required the company to obtain an audit of its accounts for the year in question in accordance with section 476.

The directors acknowledge their responsibility for complying with the requirements of the Act with respect to accounting records and for the preparation of accounts.

The accompanying notes form part of these financial statements.

These accounts have been prepared in accordance with the provisions applicable to companies subject to the small companies' regime. They were approved and authorised for issue by the directors on 21/12/2023 and signed on their behalf by



Colin Evans, Chair of the Board of Trustees of LinkAble

LINKABLE WOKING LIMITED

STATEMENT OF CASH FLOWS

FOR THE YEAR ENDED 31 MARCH 2023

FOR THE YEAR ENDED 31 MARCH 2023

	£	2023 £	£	2022 £
CASH FLOWS FROM OPERATING ACTIVITIES				
Net income for the year	(15,321)		4,091	
Adjustments for:				
Interest received	(1,533)		(857)	
(Increase) / Decrease in debtors	(19,701)		(12,398)	
(Decrease) / Increase in creditors	(6,525)		(23,575)	
		<u>(43,080)</u>		<u>(32,739)</u>
NET CASH PROVIDED (FROM) / BY OPERATING ACTIVITIES				
CASH FLOWS FROM INVESTING ACTIVITIES				
Purchase of tangible assets	(16,202)		-	
Interest received	1,533		857	
		<u>(14,669)</u>		<u>857</u>
NET CASH PROVIDED BY INVESTING ACTIVITIES				
Change in cash and cash equivalents in the year		<u>(57,749)</u>		<u>(31,882)</u>
Cash and cash equivalents at the beginning of the year		<u>234,297</u>		<u>266,179</u>
Cash and cash equivalents at the end of the year		<u><u>176,548</u></u>		<u><u>234,297</u></u>

Notes to the Financial Statements for the Year Ended 31 March 2023

LINKABLE WOKING LIMITED

1. ACCOUNTING POLICIES

a) Basis of preparation

The financial statements have been prepared in accordance with Accounting and Reporting by Charities: Statement of Recommended Practice applicable to charities preparing their accounts in accordance with the Financial Reporting Standard applicable in the UK and Republic of Ireland (FRS 102) (effective 1 January 2015) - (Charities SORP FRS 102), the Financial Reporting Standard applicable in the UK and Republic of Ireland (FRS 102) and the Companies Act 2006.

Assets and liabilities are initially recognised at historical cost or transaction value unless otherwise stated in the relevant accounting policy or note.

The Trustees consider that there are no significant areas of estimation or judgement.

b) Public benefit entity

The charitable company meets the definition of a public benefit entity under FRS 102.

c) Going concern

At the balance sheet date of 31 March 2023, LinkAble made a deficit of £15,321 and had net assets of £208,603. The Trustees have assessed projected future income streams and expenditure over the period to 31st December 2024. This has included consideration of anticipated service delivery, possible changes to local authority funding and challenges faced in securing fundraising income. The Trustees have considered plans along with internal processes and systems for managing financial and operational risks. The Trustees have concluded that the strength of the charity's reserves and liquidity of its assets, mean the charity has adequate resources to continue their activities for the foreseeable future, and that there are no material uncertainties about the charity's ability to continue as a going concern.

d) Income

Income is recognised when the charity has entitlement to the funds, any performance conditions attached to the income have been met, it is probable that the income will be received and that the amount can be measured reliably.

Income received in advance of the provision of a specified service is deferred until the criteria for income recognition are met.

e) Fund accounting

Restricted funds are to be used for specific purposes as laid down by the donor within the objectives of the charity. Expenditure which meets these criteria is charged to the fund.

Unrestricted funds are donations and other income received or generated for the charitable purposes.

Notes to the Financial Statements for the Year Ended 31 March 2023

f) Expenditure

Expenditure is recognised once there is a legal or constructive obligation to make a payment to a third party, it is probable that settlement will be required, and the amount of the obligation can be measured reliably.

Expenditure on charitable activities includes the costs of undertaken to further the purposes of the charity and their associated support costs.

g) Allocation of support costs

Expenditure is allocated to the particular activity where the cost relates directly to that activity. However, the cost of overall direction and administration of each activity, comprising the salary and overhead costs of the central function, is apportioned on a basis consistent with the use of relevant resources.

h) Tangible fixed assets

Fixed assets are stated at original historical cost less aggregate depreciation. Depreciation is provided at rates calculated to write off the cost less estimated residual value of each asset on a straight-line basis over its estimated useful life. All assets are currently fully depreciated.

i) Debtors

Trade and other debtors are recognised at the settlement amount due after any trade discount offered. Prepayments are valued at the amount prepaid net of any trade discounts due.

j) Cash at bank and in hand

Cash at bank and cash in hand includes cash and short term highly liquid investments. Cash balances exclude any funds held on behalf of service users.

k) Creditors and provisions

Creditors and provisions are recognised where the charity has a present obligation resulting from a past event that will probably result in the transfer of funds to a third party and the amount due to settle the obligation can be measured or estimated reliably. Creditors and provisions are normally recognised at their settlement amount after allowing for any trade discounts due.

The charity only has financial assets and financial liabilities of a kind that qualify as basic financial instruments. Basic financial instruments are initially recognised at transaction value and subsequently measured at their settlement value with the exception of bank loans which are subsequently measured at amortised cost using the effective interest method.

Notes to the Financial Statements for the Year Ended 31 March 2023

2. INCOME

	Unrestricted Funds 2023 £	Restricted Funds 2023 £	Total Funds 2023 £	Total Funds 2022 £
INCOME FROM:				
Donations and legacies				
Donations	22,317	200	22,517	21,302
Grants	31,150	128,855	160,005	148,789
	<u>53,467</u>	<u>129,055</u>	<u>182,522</u>	<u>170,091</u>
Charitable activities				
Charges for services - Adults	63,677	-	63,677	46,960
Charges for services - Children	50,320	-	50,320	37,675
SCC Grant for service provision - Children	187,664	-	187,664	190,009
Government Job retention Scheme	-	-	-	2,989
	<u>301,661</u>	<u>-</u>	<u>301,661</u>	<u>277,633</u>
	<u>355,128</u>	<u>129,055</u>	<u>484,183</u>	<u>447,724</u>

Restricted income for the prior year comprised grants of £117,294. All other income was unrestricted.

3. EXPENDITURE

	Direct staff costs £	Direct non-staff costs £	Support costs £	Total 2023 £
<i>Current year</i>				
Cost of Raising Funds	40,242	3,859	-	44,101
Charitable Activities				
- Adult Services	113,405	36,317	22,634	172,936
- Children's Services	235,286	53,871	29,121	318,278
	<u>388,933</u>	<u>94,047</u>	<u>51,755</u>	<u>534,735</u>
<i>Prior year</i>				
Cost of Raising Funds	38,227	4,477	-	42,704
Charitable Activities				
- Adult's Services	116,725	36,792	18,575	172,092
- Children's Services	175,801	37,524	23,356	236,681
	<u>330,753</u>	<u>78,793</u>	<u>41,931</u>	<u>451,477</u>

Notes to the Financial Statements for the Year Ended 31 March 2023

4. SUPPORT COSTS

Current year support costs comprise:

	Charitable Activities		Total 2023
	Adult Services	Children's Services	
	£	£	£
Governance costs			
Staff	8,746	8,746	17,492
Other costs	1,687	1,687	3,374
Other support costs			
Staff costs	5,648	10,489	16,137
Other Staff costs	298	554	852
Premises Costs	4,032	4,928	8,960
Office Costs	1,885	2,304	4,189
Sundries	303	370	673
Promotional Cost	35	42	77
	22,634	29,120	51,754

Prior year support costs comprise:

	Charitable Activities		Total 2022
	Adult Services	Children's Services	
	£	£	£
Governance costs			
Staff	8,167	8,167	16,334
Other costs	913	913	1,826
Other support costs			
Staff costs	3,984	7,398	11,382
Other Staff costs	222	413	635
Premises Costs	2,723	3,328	6,051
Office Costs	1,787	2,184	3,971
Sundries	461	564	1,025
Promotional Cost	318	389	707
	18,575	23,356	41,931

Notes to the Financial Statements for the Year Ended 31 March 2023

5. STAFF COSTS

	Total 2023	Total 2022
	£	£
Wages and salaries	397,841	337,402
Social Security	18,417	15,014
Pension Contributions	6,302	6,053
	<u>422,560</u>	<u>358,469</u>
	2023 Number	2022 Number
The average headcount during the year was:	<u>49</u>	<u>48</u>

The Key Management personnel comprise the Trustees, the CEO, Head of services and department managers.

The total employee benefits of the key management personnel of the Charity were £201,886 (2022: £179,704).

No employees received emoluments in excess of £60,000 (2022: none).

6. TAXATION

The company is a registered charity and no taxation liabilities arise from its charitable activities.

7. TANGIBLE FIXED ASSETS

	Plant and machinery	Fixtures and Fittings	Office Equipment	Computer Equipment	Total
	£	£	£	£	£
Cost					
At 1 April 2022	8,877	12,782	29,827	10,306	61,792
Additions	-	18,195	-	-	18,195
At 31 March 2023	<u>8,877</u>	<u>30,977</u>	<u>29,827</u>	<u>10,306</u>	<u>79,987</u>
Depreciation					
At 1 April 2022	8,877	12,782	29,827	10,306	61,792
Depreciation	-	1,993	-	-	1,993
At 31 March 2023	<u>8,877</u>	<u>14,775</u>	<u>29,827</u>	<u>10,306</u>	<u>63,785</u>
Net book value					
At 1 April 2022	-	-	-	-	-
At 31 March 2023	<u>-</u>	<u>16,202</u>	<u>-</u>	<u>-</u>	<u>16,202</u>

Notes to the Financial Statements for the Year Ended 31 March 2023

8. DEBTORS

	2023	2022
	£	£
Due within one year		
Trade debtors	10,047	-
Prepayments	4,258	5,148
Accrued income	21,095	10,551
	<u>35,400</u>	<u>15,699</u>

9. CREDITORS: AMOUNTS FALLING DUE WITHIN ONE YEAR

	2023	2022
	£	£
Trade creditors	4,391	3,109
Accruals	5,368	2,680
Deferred income	9,788	20,283
	<u>19,547</u>	<u>26,072</u>

Analysis of deferred income

	£	£
Amounts brought forward	20,283	38,613
Released to the Statement of Financial Activities	(13,325)	(38,613)
Deferred in the current year	2,830	20,283
Amounts carried forward	<u>9,788</u>	<u>20,283</u>

Notes to the Financial Statements for the Year Ended 31 March 2023

10. MOVEMENT IN FUNDS

	Balance at 1 April 2022	Income/ new designation	Expenditure	Transfers	Balance at 31 March 2023
	£	£	£	£	£
Restricted funds					
Community Foundation Surrey	-	18,000	(9,975)	-	8,025
Edward Gostling Foundation	-	25,000	(10,000)	-	15,000
Woking Borough Council	-	34,200	(34,200)	-	-
The Sheldon Trust	900	10,000	(10,900)	-	-
Surrey Chambers of Commerce	-	3,181	(3,181)	-	-
The D'Oyly Carte Charitable Trust	1,213	4,694	(3,163)	-	2,744
The Grant Foundation	2,500	-	(2,500)	-	-
The William Openshaw Street Charitable Trust	-	3,000	(3,000)	-	-
The Ladbrokes Coral Trust	-	1,500	(1,500)	-	-
The Shanly Foundation	-	5,000	(5,000)	-	-
The St James Place Foundation	-	4,000	(3,000)	-	1,000
St Faiths Trust	-	10,000	(3,300)	-	6,700
Tesco Community Grant	-	500	(150)	-	350
The Douglas Arter Foundation	500	-	(100)	-	400
Frimley Fuel	-	180	(180)	-	-
Restricted donation	-	200	(200)	-	-
Sensory room donation	1,190	-	(1,190)	-	-
Surrey Freemasons	-	6,600	(142)	-	6,458
St Peters RISF	-	3,000	(100)	-	2,900
Total restricted funds	6,303	129,055	(91,781)	-	43,577
Unrestricted funds					
Designated funds:					
Capital improvements	40,000	-	-	(40,000)	-
Fixed asset reserve	-	-	(1,993)	18,195	16,202
General fund	177,621	390,358	(440,960)	21,805	148,824
Total funds as at 31 March 2023	223,924	519,413	(534,734)	-	208,603

Notes to the Financial Statements for the Year Ended 31 March 2023

10. MOVEMENT IN FUNDS (Continued) Prior year

	Balance at 1 April 2021	Income/ new designation	Expenditure	Transfers	Balance at 31 March 2022
	£	£	£	£	£
Restricted funds					
Community Foundation Surrey	-	30,572	(30,572)	-	-
St James Place Foundation	1,500	-	(1,500)	-	-
Edward Gostling Foundation	-	5,000	(5,000)	-	-
Bailly Thomas Charitable Trust	4,000	-	(4,000)	-	-
Woking Borough Council	-	34,200	(34,200)	-	-
The Sheldon Trust	-	11,000	(10,100)	-	900
Surrey Chambers of Commerce	-	10,331	(10,331)	-	-
Peter Harrison Foundation	-	10,000	(10,000)	-	-
The D'Oyly Carte Charitable Trust	-	2,213	(1,000)	-	1,213
The National Lottery	-	9,978	(9,978)	-	-
The Douglas Arter Foundation	-	500	-	-	500
The Barchester Foundation	-	500	(500)	-	-
The Grant Foundation	-	3,000	(500)	-	2,500
Sensory room donation	-	1,190	-	-	1,190
Total restricted funds	5,500	118,484	(117,681)	-	6,303
Unrestricted funds					
Designated funds:					
Capital improvements	40,000	-	-	-	40,000
General fund	174,333	337,084	(333,796)	-	117,621
Total funds as at 31 March 2022	219,833	455,568	(451,477)	-	223,924

Notes to the Financial Statements for the Year Ended 31 March 2023

10. MOVEMENT IN FUNDS (Continued)

Purpose of funds

<i>St James Place Foundation</i>	Funding to support transition groups for young adults with learning disabilities.
<i>Community Foundation Surrey</i>	Funding towards general operating costs for LinkAble as well as additional funding for the weekly skills based group and the performing arts group.
<i>Woking Borough Council</i>	Funding towards LinkAble's Head of Services role across three years.
<i>The Sheldon Trust</i>	Funding to support transition groups for young adults with learning disabilities. Additional funding to support U18 trips out.
<i>Edward Gostling Foundation</i>	Funding towards ongoing core cost.
<i>The D'Oyly Carte Charitable Trust</i>	Funding to support the Stopgap dance group.
<i>The William Openshaw Street Charitable Trust</i>	Funding towards ongoing core cost.
<i>The Ladbrokes Coral Trust</i>	Funding towards operating cost of adult groups.
<i>St Faiths Trust</i>	Funding towards an additional member of staff to support a child on a 1:1 basis.
<i>Tesco Community Grant</i>	Support for the skills based adult group.
<i>Surrey Freemasons</i>	Funding towards the sensory room refurbishment.
<i>St Peters Relief in Sickness Fund</i>	Towards the Sensory Room upgrade.
<i>The National Lottery</i>	Support towards LinkAble core costs.
<i>The Douglas Arter Foundation</i>	Towards the Sensory Room upgrade.
<i>The Barchester Foundation</i>	To support the Adult Living Skills programme.
<i>The Grant Foundation</i>	Funding towards U18 operating cost.
<i>Peter Harrison Foundation Surrey Chambers of Commerce</i>	Funds an additional member of staff to support a child on a 1:1 basis. Funding to support kickstart employee.
<i>Bailly Thomas Charitable Trust</i>	Covid 19 funding to support loss of revenue due to services being unable to run or run in a smaller capacity, plus operating costs
<i>The Shanly Foundation</i>	Supporting Kids And Teens With Learning Disabilities.
<i>Designated funds</i>	To allow for capital improvements to the building and future growth in services and future depreciation of fixed assets

Notes to the Financial Statements for the Year Ended 31 March 2023

11. ANALYSIS OF NET ASSETS BETWEEN FUNDS

	Unrestricted Funds £	Restricted Funds £	Total Funds £
<i>Fund balances at 31 March 2023 are represented by:</i>			
Fixed assets	16,202	-	16,202
Debtors	35,400	-	35,400
Bank	130,781	45,767	176,548
Creditors	(17,357)	(2,190)	(19,547)
	165,026	43,577	208,603
	Unrestricted Funds £	Restricted Funds £	Total Funds £
<i>Fund balances at 31 March 2022 are represented by:</i>			
Debtors	15,699	-	15,699
Bank	222,623	11,674	234,297
Creditors	(20,701)	(5,371)	(26,072)
	217,622	6,303	223,924

12. TRUSTEES' REMUNERATION AND RELATED PARTY TRANSACTIONS

No remuneration was paid to the Trustees' and no expenses were paid to any Trustee in the year (2022: none).

There were no related party transactions during the year (2022: none).