

SCHEDULE OF COMPETITION CLASSES & RULES 2025

118th

ROYAL WINDSOR FLOWER SHOW

FLOWERS • FOOD • ART • CRAFTS • FUN

Saturday 7 June 2025 10am-6pm
The York Club, Windsor Great Park SL4 2BS



ROYAL WINDSOR ROSE &
HORTICULTURAL SOCIETY

Patron - His Majesty King Charles III





Solicitors near me



Legal support for everyday
and life changing events

kiddrapinet.co.uk

kiddrapinet
SOLICITORS

AYLESBURY

FARNHAM

HIGH WYCOMBE

LONDON

MAIDENHEAD

SLOUGH

Saturday 7 June 2025 · 10am-6pm · York Club, Windsor Great Park

Royal Windsor Flower Show



Last year we were delighted to welcome Sophie, Duchess of Edinburgh, and Alan Titchmarsh, Honorary President of the Royal Windsor Rose & Horticultural Society to open the show.

Dear Society Members & Friends,

A warm welcome to the 2025 Royal Windsor Flower Show Competition Schedule, for which this year's theme is 'Patterns in Nature'.

We have a wide range of competitions for you to enter; from creating a posie for His Majesty King Charles III's breakfast table or baking a knockout chocolate cake. We think we have a category for everyone to enter!

Remember, all ages and abilities are welcome, no previous experience

is necessary and everyone gets the chance to win prizes and rosettes on this special day!

Simply choose the competitions you'd like to enter from the following pages, then apply either online or by sending in the completed Competition Application form (p43) by post. So come join in the fun on this memorable day. We look forward to seeing you there on Saturday 7 June!

Good luck!

RWFS Committee



Ready for your next chapter?

From city lights to country walks,
we're here for where life takes you.

Proud to support the Royal Windsor Flower Show
Knight Frank Ascot & Virginia Water
01344 985106 | edward.shaw@knightfrank.com

 **Knight
Frank**
Your partners in property



ROYAL WINDSOR ROSE & HORTICULTURAL SOCIETY



Patron	His Majesty The King
President	Philip Jones CB, CBE, DL
Honorary President	Alan Titchmarsh CBE, DL, Hon FSE
Honorary Vice Presidents	John Anderson, Judith Blacklock, David Emanuel, Anna Friel, Mark Tilling, Vivien Mackintosh, Paul Sedgewick
Chairman	Andrew Try LL
Hon Treasurer	Stuart Adamson
Hon Secretary	To be announced
Membership Secretary	Judith Richards
Show Director	Alexandra Denman
Show Administrator	Trudie Ball
Special Advisory Member	Mike Finch
Head of Judging	Philip Carter
Show Committee	Mark Britton, Louise Pollock, Alan Williams, Catherine MacDonald, Hannah Brewer, Rebecca Seear, Ieva Poriete, Caroline Bonham
Children's Marquee & Crafts	Busy Buttons CORE Charity
PR	Charlie Davey
Social Media	Shona Frost
Sponsorship	Sunita Shroff
Trustees	John Anderson , Phil Astles, Alexandra Denman, Judith Richards, Julie Smith, Tim Filmer, Rebecca Swan, Andrew Try LL

The Society wishes to thank

The Crown Estate, Ascot Racecourse
Supports, Royal Borough of Windsor
& Maidenhead, Windsor & Eton
Express, ComXo, Windsor & Eton
Brewery, Royal Albert Institute Fund,

the Lightfoot Family, the Mackintosh
Family, volunteers, stewards, judges,
exhibitors, trade stall holders, suppliers,
our sponsors and advertisers.

Any donations to the RWRHS will be
gratefully acknowledged by the committee.

For all enquiries contact: admin@rwrhs.co.uk or 01753 449 449

COMXO

Next generation
business communications

Redefining the workplace experience



COMXO

Proud sponsors of
The 'Patterns in Nature' Garden
at The Royal Windsor Flower Show

BECOME A MEMBER OF THE Royal Windsor Rose & Horticultural Society

Founded by Queen Victoria in 1892, the Royal Windsor Rose & Horticultural Society (RWRHS) has had the honour of seven monarchs' support over its long and distinguished history. 2025 marks the charity's 133rd year and the 118th Royal Windsor Flower Show, making it one of the oldest flower shows in the world.

The Society provides a programme of fun and informative events and activities that bring us closer together as a community. Members gain free access to talks from esteemed guests and knowledgeable speakers held at the

York Club in the Windsor Great Park. Members will also receive exclusive invitations to events such as the Moat Garden Drinks Party at Windsor Castle which carry an additional cost. Plus, members receive reduced-price tickets to the Royal Windsor Flower Show.

Membership costs £30 for an Individual Membership and £58 for a Joint Membership. To join, simply visit www.rwrhs.co.uk.



Scan for membership
information

CALENDAR OF RWRHS EVENTS 2025

- | | |
|--|---|
| TALK Richard Claxton Gardening for Health | 22 Jan, 19:30, York Club, WGP* |
| TALK Royal Windsor Flower Show Launch Party | 26 Feb, 19:30, York Club |
| TALK Darran Jacques Going for Gold | 26 March, 19:30, York Club |
| VISIT Eythrope Manor Gardens | 30 April, Waddesdon Manor |
| TALK Heather Skinner Beyond the Garden Gate | 14 May, 19:30, York Club |
| Royal Windsor Flower Show | 7 June 10:00 to 18:00, York Club |
| EVENT Moat Garden Drinks Party | 25 June, 18:30 to 20:30 Windsor Castle |
| TALK tbc | 17 Sep, 19:30, York Club |
| EVENT Autumn Dinner | 15 Oct, 19:30, Venue tbc |
| EVENT Alan Williams Flowers for Christmas | 9 Nov, 19:30, Chobham |

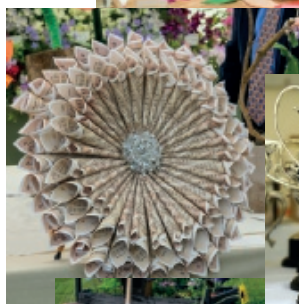
*Please visit www.rwrhs.co.uk for the most
up-to-date information about the RWRHS's
Calendar of Events*

*WGP = Windsor Great Park

Why not consider joining us as a volunteer at the Royal Windsor Flower Show for a memorable day meeting like-minded gardeners, bakers & crafters?
For details, please email membership@rwrhs.co.uk or tel **01753 449 449**

‘Don’t take things too seriously! Even if you don’t win a prize, you’ll still have fun! And anyway, if you don’t compete, you definitely won’t win!’
Kim Wright

‘I was chuffed to bits to come first in the homemade gluten/lactose-free cake competition. It’s something I’m always trying to perfect, so it felt great to have my efforts recognised.’
Rebecca Doran



‘I like entering competitions because it’s fun to make your entries and to find out if you have won anything. It’s also nice to see what prizes you’ve won and I loved getting my rosettes and cup.’ Hattie Frost, Age 9.
Winner of The ‘Jubilee’ Goblet.

‘It felt great to win second place (in the jam tarts). It was lots of work but also lots of fun.’
Oliver Doran, Age 9

WHY ENTER OUR COMPETITIONS?

INDEX OF COMPETITION CATEGORIES

PAGE	CATEGORY
11	Master Gardener
13	Community Container Competition
15	Roses
17	Sweet peas
19-20	Pot Plants, House Plants & Cut Flowers
22-23	Vegetables
24	Fruit
25	Windsor Great Park Classes
25	Windsor Pubs in Bloom
26-27	Floral Arrangements
29-30	Cookery
32	Photography
32-33	Arts
33	Crafts
35-37	Children's Competitions
37-38	Schools' Competitions
40-41	Rules for Exhibitors
42	Map of Show ground
43	Competition Application Form 2025



Villaggio Verde, The UK Specialist Olive Tree Grower and Supplier

Proud Sponsors of **The Master Gardener Class**



Find us at www.villaggioverde.co.uk or
on Instagram [@villaggioverde](https://www.instagram.com/villaggioverde)

MASTER GARDENER

By invitation only

The aim of the Master Gardener Competition is to celebrate the horticultural excellence and practical know-how found in Britain's private country estates by exhibiting the work of a handful of exceptional gardeners (some of whom's gardens, it's worth noting, are rarely seen by the public).

The competition, which involves creating an in-the-round display on a

vintage plantsman's trolley, gives six professional gardeners the opportunity to exhibit their horticultural skills and plant knowledge. The theme of this year's display is 'Patterns in Nature' and which is deemed by the judges to have the best overall impression will win the coveted 'Master Gardener' Cup.

Staging times: 8am to 4pm Friday 6 June.

Class No

1

MASTER GARDENER CUP

'Patterns in Nature'

Kindly supported by Villaggio Verde www.villaggioverde.co.uk

To create a display of plants to celebrate this year's theme of 'Patterns in Nature'. Exhibit to be displayed in-the-round on a vintage plant trolley (provided). Trolley top measures 170cm x 105cm and sits 100cm off the ground. If desired, the ground space around the trolley may also be used, however, this should be at no greater distance than 1.5m from the trolley.

Please supply a display name board for your garden or estate.



FARMING | OUTDOOR EVENTS | LANDSCAPING CONTRACTORS



The Rayner Family are
delighted to support The Royal
Windsor Flower Show



RAYNER FARMS LIMITED

ROYAL BERKSHIRE FARMERS

Farming in Windsor since the reign of Queen Elizabeth I

Directors: Miss Alice Rayner, Miss Victoria Rayner,
Miss Isabelle Rayner, and Mr Colin Rayner

jraynersons.com



COMMUNITY CONTAINER

Competition

Now in its second year, the Community Container Competition is aimed at encouraging a 'community' of people – whatever age – to create an in-the-round planting display in a recycled container.

The community could be a

gardening club, school group, family, retirement group, company team building or another!

The container deemed the most engaging by the judges will win the Andrew Try Cup.

Staging times: 8am to 4pm Friday 6 June.

Class No

2

'THE ANDREW TRY' CUP

A community project to create an in-the-round planting display in a recycled container (eg an old wheelbarrow, a shopping crate, a washing-up bowl or even an old tyre). The community should consist of two or more people of any age and ability. Please supply a display name board for your community group.

1st Prize: £50 gardening gift vouchers

2nd Prize: £30 gardening gift vouchers

3rd Prizes: £20 gardening gift vouchers

PROUD SPONSORS OF THE
WINDSOR CHALLENGE CUP



HARDINGS

HARDINGS

www.hardings.co.uk

ROSES

THE ROSE SOCIETY UK BRONZE MEDAL

Awarded for the most outstanding rose in Class Nos 3-12. A cash prize

of £5 will be awarded to cup winners. Cash prizes of £3, £2 and £1 will be awarded in all other classes for 1st, 2nd and 3rd places.

Class No

- | | |
|--|--|
| <div style="border: 1px solid black; padding: 2px; display: inline-block; width: 30px; text-align: center;">3</div> | THE 'CALEY CHALLENGE' CUP
A vase with one stem of cluster-flowered rose (floribunda). |
| <div style="border: 1px solid black; padding: 2px; display: inline-block; width: 30px; text-align: center;">4</div> | THE 'SIR WILLIAM CARTER' CUP
A vase with three stems of cluster-flowered roses; one or more cultivars. |
| <div style="border: 1px solid black; padding: 2px; display: inline-block; width: 30px; text-align: center;">5</div> | THE 'COURAGE CHALLENGE' CUP
A vase with one specimen bloom of large-flowered rose (hybrid tea). |
| <div style="border: 1px solid black; padding: 2px; display: inline-block; width: 30px; text-align: center;">6</div> | THE 'ROMAINE CHALLENGE' CUP
A vase with three rose blooms of large-flowered roses (hybrid tea) of one or more cultivars. |
| <div style="border: 1px solid black; padding: 2px; display: inline-block; width: 30px; text-align: center;">7</div> | THE 'AVERY TYRELL CHALLENGE' CUP
Three vases, with three stems per vase, all cluster-flowered or all large-flowered roses. |
| <div style="border: 1px solid black; padding: 2px; display: inline-block; width: 30px; text-align: center;">8</div> | THE 'REYNOLDS ALBERTINI CHALLENGE' CUP
A container of miniature roses. |
| <div style="border: 1px solid black; padding: 2px; display: inline-block; width: 30px; text-align: center;">9</div> | THE 'WINDSOR CHALLENGE' CUP
A bowl of any roses, arranged for all round effect. |
| <div style="border: 1px solid black; padding: 2px; display: inline-block; width: 30px; text-align: center;">10</div> | THE 'ACUMEN' TROPHY
A vase with one spray or stem of any type of rose. Judged for scent. |

NOVICE CLASSES

For exhibitors who have not won first prize for roses at this show.

THE 'ELIZABETHAN CHALLENGE' CUP

Awarded to the competitor with most points in Class Nos 11-12.

- | | |
|--|---|
| <div style="border: 1px solid black; padding: 2px; display: inline-block; width: 30px; text-align: center;">11</div> | One specimen bloom of any rose cultivar. |
| <div style="border: 1px solid black; padding: 2px; display: inline-block; width: 30px; text-align: center;">12</div> | A bowl of roses, any type, all-round effect. May include foliage. |



**AWBS INTERNATIONAL
WOMEN'S CLUB
IS A PROUD SPONSOR OF
THE**

ROYAL WINDSOR FLOWER SHOW

Come visit us at our Booth

For more info: membership@awbs.org.uk

We are an international, social, cultural, educational, sports and philanthropic ladies club offering dozens of great monthly activities and fundraising opportunities.

As well as being a wonderful place to meet friends old and new from all walks of life!

All women are welcome!

www.AWBS.org.uk

[@awbsinternationalwomensclub](https://www.instagram.com/awbsinternationalwomensclub)

SWEET PEAS

NATIONAL SWEET PEA SOCIETY BRONZE MEDAL

Awarded to the best exhibit in Class
Nos 13-20. A cash prize of £5 will

be awarded to cup winners.

Cash prizes of £3, £2 and £1 will
be awarded in all other classes.

Class No

All classes are for Spencer type sweet peas, unless otherwise stated.

*EXPERIENCED GROWERS: Class numbers 13-16 are for those who grow
50 or more cordons.*

13

THE 'PUTNAM CHALLENGE' CUP

One vase of sweet peas, containing nine stems of one cultivar.

14

THE 'AIRD CHALLENGE' CUP

One vase of sweet peas, containing nine stems of mixed cultivars.

15

THE 'LADY FAIRBAIRN CHALLENGE' CUP

Three vases of sweet peas, with nine stems to a vase, three cultivars (one cultivar per vase).

16

A bowl of mixed sweet peas. Bowl no larger than 15.25cm
(6 inch) diameter. Judged for quality and decorative effect.

*NOVICE GROWERS: Class numbers 17-18 are for those who grow just a few
stems (up to 50 cordons).*

17

THE 'SIR CYRIL DYSON' CUP

One vase of sweet peas, six stems, one cultivar.

18

One vase, sweet peas, six stems, mixed cultivars.

ALL GROWERS: these classes are open to all

19

One vase with a single stem of sweet peas.

20

A bowl of old fashioned sweet peas (not Spencers and not
cordon grown). Mixed or single cultivar. Judged for quality and
decorative effect.

Audley Villages

Luxury Retirement Villages



Proud sponsors of The Royal Windsor Flower Show



Where liberty and luxury meet

Audley Villages available in Berkshire and Surrey.

For more information or to book a visit:

Audley Cooper's Hill, Englefield Green, Surrey TW20 9EY
01784 557 494

Audley Sunningdale Park, Ascot, Berkshire SL5 0QB
01344 859 237

www.audleyvillages.co.uk/windsor



It can only be Audley.

POT PLANTS, HOUSE PLANTS & CUT FLOWERS

All pot plants to be staged on plant saucers.

A cash prize of £5 will be awarded to cup winners. Cash prizes of £3, £2 and £1 will be awarded in all other classes for 1st, 2nd and 3rd places

except Class 21, which has prizes of £5, £3 & £2, donated by the late P. Stoveld Esq. The Woolworth Challenge Cup will be given to the best exhibit in Class Nos 28-30.

Class No

POT PLANTS

Pelargonium

21

THE 'BRIDIE STOVELD MEMORIAL' CUP

Display of three pots of pelargoniums consisting of 1 plant Zonal, 1 plant Regal, 1 plant Scented or 1 plant Ivy Leaf.
Maximum pot size 20.5cm (8 inch) diameter.

22

Best overall pelargonium. Any variety.
Maximum pot size 20.5cm (8 inch) diameter.

Fuchsia

23

THE 'STOVELD CHALLENGE' CUP

Best overall fuchsia. Any variety.
Maximum pot size 20.5cm (8 inch) diameter.

Begonia

24

THE 'LILLYWHITE CHALLENGE' CUP

Best overall begonia. Any variety.
Maximum diameter pot 20.5cm (8 inch).

25

One flowering pot plant (**not fuchsia, begonia or pelargonium**).
Maximum pot size 20.5cm (8 inch) diameter.

HOUSE PLANTS

26

One house plant.
Maximum pot size 25.5cm (10 inch) diameter.

27

Planted bowl or terrarium of house plants.
Maximum bowl size 28cm (11 inch) diameter.

Class No

28

One specimen cactus.
Maximum pot size 20.5cm (8 inch) diameter.

29

One specimen succulent.
Maximum pot size 20.5cm (8 inch) diameter.

30

A group of succulents and or cacti arranged for decorative effect. To cover space not larger than 45cm square.

CUT FLOWERS

31

THE 'MARY JEFFRYES CHALLENGE' CUP

Bowl of mixed flowers and foliage, judged on natural scent alone. Not to include herbs. Bowl not to exceed 15cm (6 inch) diameter.

32

A vase of mixed garden flowers arranged for frontal effect.

33

A vase of wild flowers grown from seed.
(Stems no taller than 90cm (3ft) and staged in a weighted container)

34

A vase of ornamental grass(es).
(Stems no taller than 90cm (3ft) and staged in a weighted container)

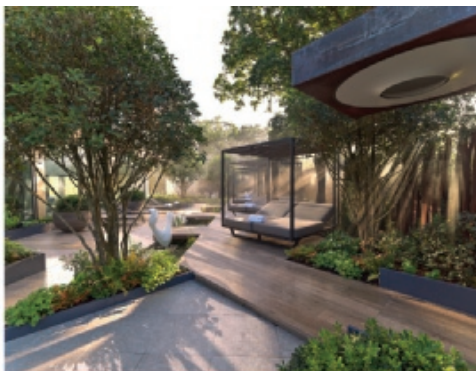
35

A single spray or stem of a shrub (not roses) chosen for bearing fruit, and/or for flower or foliage effect.
(Stems no taller than 90cm (3ft) and staged in a weighted container)

LANDFORM



"Proud to support the Royal
Windsor Show"

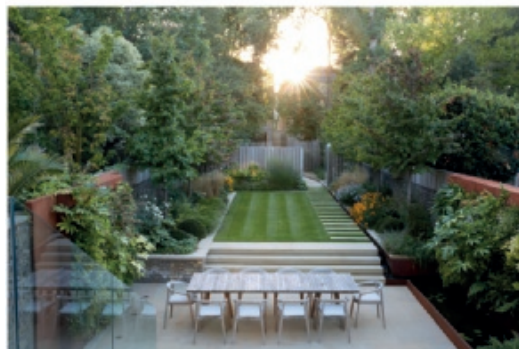


Landform is a local, award-winning company with over
30 years of expertise &
excellence

Offering services in:

- Design
- Build
- Maintenance

We can take care of all
your garden needs



Landform Consultants Ltd
The Nursery, Bagshot Road
Chobham GU24 8DB
Tel. 01276 856 145
www.landformconsultants.co.uk



VEGETABLES

THE NATIONAL VEGETABLE SOCIETY

Award for Best in Show. The Royal Horticultural Society showing standards will apply.

A cash prize of £5 will be awarded to cup winners. Cash prizes of £3, £2 and £1 will be awarded in all other classes for 1st, 2nd and 3rd places.

Class No

36

THE 'TW CLUCAS CHALLENGE' CUP

A collection of vegetables, three kinds. Size of display not to exceed 91cm x 61cm (3ft x 2ft).

POTATO CLASS

37

THE 'MURPHY CHALLENGE' CUP

Five potato tubers. Potatoes should be clean, blemish-free, medium-sized, evenly matched, well shaped with shallow eyes. They should be lightly washed and displayed on a paper plate or board.

PEA & BEAN CLASSES

Exhibit large, long, fresh, smooth pods of good colour. Peas and broad beans should be well-filled with tender peas or beans. Exhibits should be well matched and shown on a plate or board.

38

One dish of peas (six pods).

39

One dish of broad beans (six pods).

ONIONS, SHALLOTS & GARLIC CLASSES

40

One group of onions (three bulbs). Shown clean, as grown.

41

One dish of garlic (three bulbs).

42

One dish of spring onions (six bulbs).

Class No

ROOT VEGETABLE CLASSES

Root vegetables should be carefully washed. Stalks and leaves neatly trimmed to 7.5cm (3 inch). Vegetables should be blemish-free, evenly matched and evenly coloured. Display directly on the show bench, plates are not needed.

43 Three beetroots, round or cylindrical.

44 Three carrots.

SALAD CLASSES

Salads should be fresh, clean and evenly matched. Radishes are shown as a tied bunch complete with foliage. Any container may be used, including upcycled products.

45 One planted container of mixed salad leaves.
Maximum container size 28cm (11 inch) diameter.

46 One planted container of more than three salad crops
(eg salad onion, lettuce, carrots, radish, beetroot, tomatoes etc).
Maximum container size 28cm (11 inch) diameter.

47 Two lettuce.

48 Six radishes.

OTHER CLASSES (VEGETABLES)

49 Six stems of asparagus.

50 One cabbage.

51 Three sticks of rhubarb with only 7.5cm (3 inch) of leaf blade.

52 Any vegetable (not specified above).

53 A collection of cut fresh herbs for culinary use, five distinct kinds, name and stage in separate vessels, displayed for best visual effect.

54 Vegetable animal (adults). This may include the use of fruit.

FRUIT

Class No

THE 'CHAMBER OF TRADE' CUP

Awarded to the competitor with the most points in Class Nos 55-56. A cash prize of £5 will be awarded to the cup winner. Cash prizes of £3, £2 and £1 will be awarded in all other classes for 1st, 2nd and 3rd places.

All fruit should be ripe, with the exception of gooseberries, which may be shown unripe. Specimens should be well matched, clean and blemish-free. Fruit has a natural bloom on its surface and this should be retained if possible and not washed off. Stalks and calyces should be left on and fresh. The plant foliage should be used to decorate the exhibit.

55

One dish of soft fruit.

56

One dish with 10 strigs of currant, one kind.

ARTESIGN COURSES
Award Winning

- ART FOUNDATION - BEGINNERS
- 3D ART & ILLUSTRATION
- SEW ARTY - BEGINNERS
- FASHION DESIGN & SEWING
- ART & TEXTILE GCSE

SATURDAY & AFTER SCHOOL

Ofsted Registered

CREATIVE WELLBEING
BUSY BUTTONS
CORE CHARITY

HOLIDAY CAMPS

5-15 YEARS

EASTER: 7 - 11 & 14 - 17 APRIL

MAY HALF TERM: 27 - 30 MAY

SUMMER: 28 JULY - 29 AUG

BOOK NOW

registered charity 1188606 www.busybuttons.org

WINDSOR GREAT PARK CLASSES

The following classes are open to residents or employees of the Windsor Great Park only.

‘WINDSOR GREAT PARK’ CUP

We have selected six Classes from across the Competition Schedule that residents/employees can enter for the ‘Windsor Great Park’ Cup competition. The award will be given to the competitor with the most points in those classes listed

below. Importantly, you must ensure your Exhibit card* states that you are a Windsor Great Park resident/employee.

A cash prize of £5 will be awarded to the cup winner. Cash prizes of £3, £2 and £1 will be awarded in all other classes for 1st, 2nd and 3rd places.

**See page 40 Rule No 4 for details.*

Class No

-
- | | |
|----|---|
| 57 | A bowl of any roses, arranged for all round effect. |
| 58 | A vase of mixed garden flowers arranged for frontal effect. |
| 59 | The Queen’s favourite, a Victoria Sandwich Cake. Fill with raspberry jam and sprinkle with caster sugar. No cream should be used. |
| 60 | A jar of homemade jam. |
| 61 | One print of wildlife. Show the beauty and diversity of animals in their natural habitats. |
| 62 | An artistic display of pressed flowers and foliage. |

WINDSOR PUBS IN BLOOM

Supported by Windsor & Eton Brewery

Class No

-
- | | |
|----|--|
| 63 | <p>THE ‘JOHNNIE WALKER’ CUP</p> <p>To be awarded to the most attractive, florally decorated, Windsor and surrounding area pub (within 10 miles). Judging announced within 10 days of the show. Plants may be home grown or bought from local suppliers. Please email entries to membership@rwrhs.co.uk to: RWRHS, ‘Windsor Pubs in Bloom’, 18 Horton Rd, Datchet SL3 9ER.</p> |
|----|--|

FLORAL ARRANGEMENTS

Class No

64

A POSIE FOR HIS MAJESTY THE KING

Open to all who wish to enter

Alan Titchmarsh, our Honorary President and florist Yan Skates, will choose an arrangement from this Class to be presented to His Majesty The King, and displayed on his breakfast table.

A small arrangement to be viewed from all sides, suitable as a table display. It should include fragrant, seasonal garden flowers and foliage and should be staged in a container/pot/or vase containing water to ensure it is kept fresh in time for the presentation to His Majesty. No accessories and no floral foam allowed. Finished design to be no taller than 18cm (7 inch) and with a diameter no larger than 18cm (7 inch) – tea plate size – or 18cm (7 inch) along its longest edge.

Judges: RWFS Honorary President Alan Titchmarsh & RWFS Ambassador Yan Skates

Floral exhibits in Class Nos 65-67 will be judged in accordance with The National Association of Flower Arrangement Societies (NAFAS) Competitions' Manual, Fourth Edition 2023, available from nafas.or.uk.

*Supplementary Rules and Definitions for Floral Arrangements:
All competitors must ensure that all drapes, backings and props used in their exhibits are fixed firmly.*

65

THE 'WINDSOR GOLDEN ROSE' TROPHY

'Garden Bounty'

An arrangement of fresh plant material in an upcycled container. Plant material to include flowers, greenery, fruit and vegetables. No floral foam or accessories permitted. Space allowed 76cm (30 inch) width x 76cm (30 inch) depth, height unlimited. To be viewed and judged from the front, staged against the marquee wall.
Cash prizes: 1st £15, 2nd £10, 3rd £5.

66

THE 'DOREEN DIBBS' FLORAL CLUB SALVER

'A Floral Crown'

A floral crown made from natural materials. Wire, string, ribbon and glue are allowed for construction, but no floral foam.

Class No

Props are allowed for displaying the piece to full effect on the hat stands provided. The finished crown must be able to be detached from the display and worn by a model.

Space allowed 76cm (30 inch) width x 76cm (30 inch) depth, height unlimited.

Cash prizes: 1st £10, 2nd £5, 3rd £3.

67

THE 'LADY DYSON MEMORIAL' CUP

An Imposed Flower Class open to all ('with some moderate skills'). Limited places, allocated on a 'first come, first served' basis.

'Forever Summer'

Sponsored by The Stone Lane Flower Company, Bintree, Norfolk.
www.thestonelaneflowercompany.co.uk

An arrangement of dried material within a defined, allocated space.

The whole design to be constructed within the marquee to a set time limit and during times allocated for staging exhibits, and pre-arranged with the organisers.

All materials for the design will be provided, and as identical as possible with natural materials. This will be unseen until arrival in the marquee. Competitors must bring a basic,floral toolkit for their own use. Suggestions for items in the kit will be made once a competitor is allocated a place. Kits will not be provided by the show.

Exhibits to be staged 3pm-8pm on Friday 6 June 2025.

COWORTH · PARK

ASCOT

DORCHESTER COLLECTION



UNHURRIED SPLENDOUR, UNMATCHED CARE

COOKERY

IMPORTANT NOTICE Competitors are asked to cover all cookery entries with a see-through covering such as a plastic bag

THE 'SAWDAY' CUP

Awarded to the competitor gaining the most points in this section (Class Nos 68-90).

Points: 1st = 4, 2nd = 3, 3rd = 2, VHC=1.

A cash prize of £5 will be awarded to cup winners. Cash prizes of £3, £2 and £1 will be awarded in all other classes for 1st, 2nd and 3rd places. Please make your entry as visually appealing as possible.

Class No

AFTERNOON TEA

68 THE 'COWORTH PARK' CUP

Three miniature cakes/pastries, all the same, suitable to be included in an English-style Afternoon Tea. The winning entry will be recreated by Coworth Park Head Chef, Adam Smith, and be part of their Meadow Afternoon Tea Menu, which the winner, along with 3 guests, will be invited to enjoy.

69 THE 'MARK TILLING CHALLENGE' CUP

A chocolate cake, any recipe.

Cash prizes of £10 and £5 will be awarded for 2nd and 3rd place.

70 Six butterfly cakes, any recipe.

71 The Queen's favourite, a Victoria Sandwich Cake. Fill with raspberry jam and sprinkle with caster sugar. No cream should be used.

72 A Dundee cake.

73 A cake including a floral or vegetable ingredient. Please display a card detailing what flower or vegetable has been used.

74 A 'free-from' cake, suitable for someone with a food allergy or intolerance. Please display a card detailing what your cake is free from.

75 A cake containing honey, any recipe.

76 A sticky ginger cake, any recipe.

Class No

77 A British Trifle. Open to your interpretation, this can be a traditional family recipe or something with a modern twist. It must be served in a transparent bowl and the layers clearly visible and clean.

78 A loaf of home-made sourdough bread, displayed on a bread board.

79 A loaf of home-made bread (a bread maker can be used).

80 Five savoury cheese scones. Glaze with milk or egg and sprinkle grated cheese on top.

PRESERVES

81 A jar of homemade jam.

82 A jar of homemade marmalade.

83 A jar of homemade jelly.

84 A jar of honey.

PICKLES, SAUCES & FERMENTED FOODS

85 A jar of homemade chutney.

86 A jar of pickled vegetables.

87 A jar of fermented food.

88 A jar of spicy sauce.

BEVERAGES

89 A bottle of a homemade alcoholic beverage, eg beer, cider, wine.

90 A bottle of a homemade flavoured gin. Please display a card to detail the flavouring.

LAITHWAITES

SINCE 1969

Laithwaites are delighted to be supporting The Royal Windsor Flower Show

Founded in Windsor by Tony Laithwaite CBE
we are still a family owned and run, award-winning
Berkshire 'grape to glass' wine business.

Join us at The Royal Windsor Flower Show to sample
Windsor Great Park sparkling wine and gin as well
as to hear about some of our recent sustainability
initiatives and community projects.

For more about what we offer to both
private and trade customers visit our website
or scan the QR code below.



*Tony Laithwaite
CBE, founder*



*Meadow flowers
- Windsor vineyard*



laithwaites.co.uk



PHOTOGRAPHY

FOR AMATEURS ONLY

Entries in Class Nos 91-97 must be printed on photographic or photo printing paper. Max size 25.5cm (10 inch) x 20.5cm (8 inch) including mount, if used.

Class No

91

THE WINDSOR & ETON EXPRESS PHOTOGRAPHIC CHALLENGE:

‘Patterns in Nature’. One print to show visible regularities of form found in the natural world.

The winning photograph will be printed in the Windsor & Eton Express.

92

One print of a garden scene.

93

One print of a portrait of a gardener. Show the character of a gardener.

94

One print of a natural landscape. Show the beauty of Nature in its purest form.

95

One of print of Nature in an urban setting. Show how Nature seeks to restore its place in an urban setting.

96

One print of wildlife. Show the beauty and diversity of animals in their natural habitats.

97

One print of Nature using macro photography. Capture the small details in nature.

ART

FOR AMATEURS ONLY

Entries must not have been exhibited in this show previously. Maximum display area for any item is 90cm x 90cm (3ft x 3ft). NOTE All artworks must be ready to hang

Class No

98

A painting of trees.

THE CUP FOR PHOTOGRAPHY

Awarded for best overall print in this section. A cash prize of £5 will be awarded to cup winners. Cash prizes of £3, £2 and £1 will be awarded in all other classes for 1st, 2nd and 3rd place.

THE CUP FOR ART THE ‘MAUD HAUGH’ TROPHY

Awarded for the best exhibit in Class Nos 98-100. A cash prize of £5 will be awarded to the cup winner. Cash prizes of £3, £2, and £1 will be awarded in all other classes for 1st, 2nd, and 3rd places.

- 99** A landscape (any medium).
- 100** A portrait of an animal.

CRAFTS

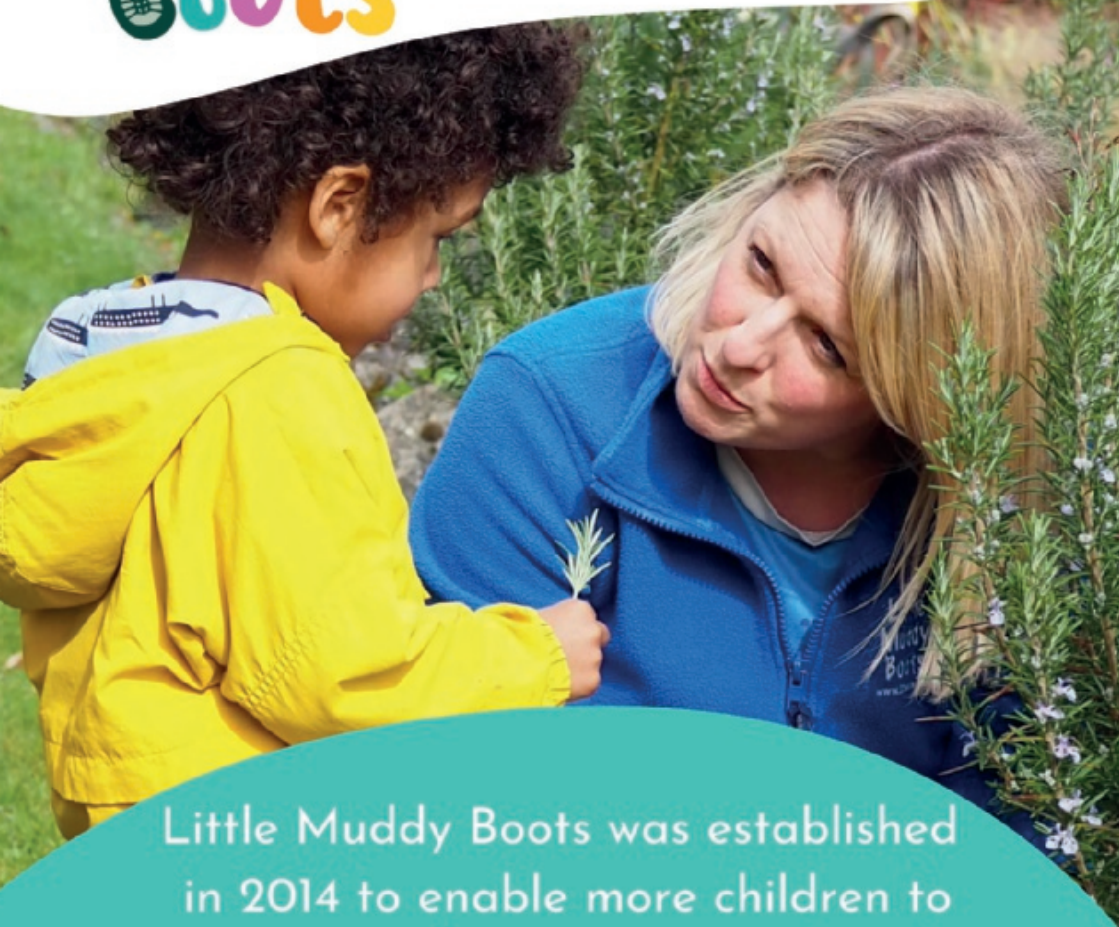
Open to amateurs only. Entries must not have been exhibited in this show previously. Max display area for any item 60cm x 60cm (2ft x 2ft)

THE 'WALTON' CUP Awarded to the Best Craft exhibit in Class Nos

101-112. A cash prize of £5 will be awarded to the cup winner. Cash prizes of £3, £2 and £1 will be awarded in all other classes for 1st, 2nd & 3rd places.

Class No

- 101** A giant paper flower. Made predominantly with paper (for example tissue or crepe paper), tape, wire and glue. Please consider how you will display/support the flower for best visual effect. (Stem and flower no taller than 90cm (3ft) and staged in a weighted container)
- 102** A quilted item. This can be hand or machine made.
- 103** A animal or insect made of felt.
- 104** A hand-knitted item of clothing.
- 105** A child's toy or game in any medium.
- 106** A crochet flower.
- 107** A crochet post box topper.
- 108** A teddy bear made from recycled fabric.
- 109** A traditional sampler, hand stitched. To be displayed in a frame no larger than 40cm (15.5 inch) x 50cm (19.5 inch).
- 110** An item of patchwork. This can be hand or machine made.
- 111** An artistic display of pressed flowers and foliage.
- 112** Any other craft item.



Little Muddy Boots was established
in 2014 to enable more children to
connect with nature, in a safe and
stimulating
outdoor environment.

www.littlemuddyboots.co.uk

CHILDREN'S COMPETITIONS

This year, Busy Buttons CORE Charity, lead by Louella Fernandez-Lempiäinen & Lautaro Lempiäinen, will creatively transform the Children's Marquee with the theme 'Father Thames: A Tapestry of Life', celebrating the river's rich flora, fauna, history and towns, inspiring us to cherish and protect this living landscape for generations.

Encourage children to showcase their talents in art, craft, gardening and cooking by entering the different competition classes. On the day, they can immerse themselves in hands-on craft workshops, discover fascinating facts about the river, and be inspired to become stewards of its future.

Cash prizes £2, £1.50 & £1 will be awarded in all classes. Prize money donated in memory of the late Dennis Lightfoot by his family.

Points system

1st = 4, 2nd = 3, 3rd = 2, VHC = 1

Prizes are as follows:

THE 'JILL LIGHTFOOT' CUP

Awarded to children 5 yrs old and under with most points in Class Nos 113-121.

THE 'PORRI CHALLENGE' CUP

Awarded to children 6-10 yrs old with most points in Class Nos 122-134.

THE 'JUBILEE' GOBLET

Awarded to those aged 11-15, gaining the most points in Class Nos 135-146.

'ST GEORGE'S' COURAGE CUP

Awarded to the Best in Show from any Children's Class. £5 prize money kindly donated by St George's School, Windsor.

THE 'JOAN WATERFIELD' CUP

£5 prize money, kindly donated by The Royal Albert Institute Fund, will be awarded to Best in Show from any Children's Art & Craft Class (Class Nos 119-121; 131-134; 143-146).

Class No

GARDENING for children aged 5 years and under

113

Grow a cress head.

114

Bowl of floating flower heads.

115

A vegetable character (fruit may also be used). No plastic.

COOKERY for children aged 5 years and under

116

Three thumb print cookies (jam drops).

117

Three fairy cakes.

118

Three squares of flapjack.

Class No

ART & CRAFT *for children aged 5 years and under*

- 119** Make a colourful pebble animal found along the river. Use craft and recycled materials too (any size).
- 120** Make a 3D dragonfly in paper. Size 20-30 cms.
- 121** Draw/paint any animal that lives in the River Thames. (A4 size).

GARDENING *for children aged 6-10 years*

- 122** Cress head.
- 123** An arrangement of garden flowers in a jam jar.
- 124** A miniature garden. Use a seed tray or shoebox.
- 125** One pot of mixed salad leaves.
- 126** A vegetable animal (fruit may also be used). No plastic.

COOKERY *for children aged 6-10 years*

- 127** Four homemade biscuits.
- 128** Four homemade jam tarts.
- 129** A homemade pizza, decorated to your own theme.
- 130** A Victoria Sponge cake (Mary Berry recipe, no cream).

ART & CRAFT *for children aged 6-10 years*

- 131** Make a 3D under water animal that lives in the Thames River (e.g. fish, mammal or crustacean). Use only recycled materials. (size 30 to 70 cms)
- 132** Make a 5 piece bunting inspired by flowers that grow along the River Thames.
- 133** Paint a waterfowl that lives along the shores of the River Thames using watercolours on paper. (A4 size)
- 134** Any sewn item. Hand/machine sewing allowed. Should demonstrate your imagination and creativity. Adult supervision may be needed but it should be all your own work.

GARDENING *for children aged 11-15 years*

- 135** An arrangement of garden flowers in a jam jar.
- 136** A vegetable animal (fruit may also be used).
- 137** A container of growing herbs. Upcycled containers encouraged.
- 138** A container of flowering plants.

Class No

COOKERY for children aged 11-15 years**139**

A minimum of 6 homemade sweets, presented in a bag or box.

140

Three miniature cakes/pastries, all the same, suitable to be included in an English-style Afternoon Tea. The winning entry will be recreated by Coworth Park Head Chef, Adam Smith, and be part of their Meadow Afternoon Tea menu, which the winner along with 3 guests will be invited to enjoy.

141

A homemade pizza, decorated to your own theme

ART & CRAFT for children aged 11-15 years**142**

Make a 3D under water animal that lives in the Thames River (e.g. fish, mammal or crustacean). Use only recycled materials. (size 30 to 70 cms)

143

Make a mask of Father Thames

144

Paint a natural landscape of the Thames River in watercolours on paper. (A3 size)

145

Any sewn item. Hand/machine sewing allowed. Should demonstrate your imagination and creativity. Adult supervision may be needed but it should be all your own work.

SCHOOLS' COMPETITIONS

Class No

SCHOOLS' CRAFT COMPETITION**146****THE ASCOT RACECOURSE SUPPORTS' CUP**

Prizes of craft gift vouchers will be awarded as follows:

1st prize £50; 2nd prize £30; 3rd prize £20.

Ten local schools have the opportunity to be inspired to create their own art installations to the theme, 'The Thames Tales' at Busy Buttons CORE Charity's design studio at St Agnes Church, Windsor. Students will learn of the river's bountiful and diverse nature, wildlife, historic landmarks and captivating stories. These vibrant creations will be showcased in the Children's Marquee at the show. If your school would to be part of this exciting journey, send an email to community@busybuttons.org with 'School's Craft Competition' in the subject line by 17 March 2025!

GARDENING**THE 'KEN MACKINTOSH' SHIELD**

The late Ken Mackintosh created the Schools' Competition to inspire and educate children in all manner of gardening. He was a long-serving Chairman of the Society and his family continue his legacy in supporting the Society and all schools who enter these Classes. The Ken Mackintosh Shield will be awarded to the school that gains the most points in Class Nos 147-148.

The following classes must be staged by 4pm on Friday 6 June 2025.

Local schools will be asked to complete two gardening challenges in 2025. Fact sheets for each challenge are available on entry.

We are delighted that Little Muddy Boots will provide a gardening mentor in each of our participating schools.

147**'PETER SEABROOK GREAT POTATO CHALLENGE'**

1st Prize: £50 gardening gift vouchers

2nd Prize: £30 gardening gift vouchers

3rd Prize: £20 gardening gift vouchers

Plant and grow potatoes in a portable container, such a large pot, sack or half-sized growbag. The container will be tipped out and contents weighed. The school with the heaviest weight crop wins.

148**PATTERNS & CONNECTIONS IN NATURE****'WHEELBARROW CHALLENGE'**

1st Prize: £50 gardening gift vouchers

2nd Prize: £30 gardening gift vouchers

3rd Prizes: £20 gardening gift vouchers

NOTE £15 gardening gift vouchers will be given to participating schools that have not be won 1st, 2nd or 3rd place with the aim of encouraging them to continue gardening

Plant and grow on a wheelbarrow to celebrate patterns and connections in nature. The Society will provide compost and some starter seeds to all schools but you are encouraged to add your own plants and decorations. Little Muddy Boots will also provide printable posters so you can organise your own 'seed and seedling swap'. Each entrant must design and make a name plaque for their wheelbarrow (to be placed after judging) and are encouraged to decorate their wheelbarrows to support the theme. We hope you can re-use your wheelbarrow from 2024 but do get in touch if this is not possible and the Society will try to supply a replacement.



ST GEORGE'S SCHOOL
WINDSOR CASTLE

*Proud sponsors of the
St George's Courage Cup*

KINDNESS | HONESTY | COURAGE

THE
GOOD
SCHOOLS
GUIDE

*A place where children
may find their 'happy ever after'*

*Find out more at
stgwindsor.org*



RULES FOR EXHIBITORS

1. **ENTRIES** All competitors must use the official online Competition Application Form found at www.rwrhs.com to confirm which classes they intend to enter. Alternatively, post the paper Application Form (page 43) to RWRHS, 18 Horton Road, Datchet SL3 9ER. These must arrive by midday on Monday 2 June 2025.
2. **EXHIBITS** **Only one exhibit per person per class is permitted.**
All plants, flowers, foliage, vegetables or fruit must have been grown by the exhibitors in their own garden or allotment, except Flower Arranger classes. The Society reserves the right to inspect, before or after the show, gardens from which the exhibits have been entered for competition.
3. **STAGING EXHIBITS** The York Club grounds and marquees will be open for the purpose of staging exhibits on Friday 6 June 2025, from 3pm-8pm, and on Saturday 7 June, from 7am-9am **ONLY**, however, last admission to the marquee and issuing of entry cards is 8.30am.
4. **EXHIBIT CARDS** Exhibit Cards must be collected by Exhibitors from the desk in the Competition Marquee (the main marquee on site) by 8.30am. Exhibitors are responsible for checking and placing them face down in front of their exhibit in the correct class so that their name is not visible.
5. **JUDGING** Judging of all classes will commence promptly at 9.15am on Saturday 7 June 2025. Stewards will clear the marquees prior to judging and all exhibitors must have left by 9am. Judges will not enter the marquees until all entries are staged and will have no conflicting interest in the classes they are judging. The decisions of the judges are final to such action as may be taken under rule 12.
6. **THE BANKSIAN MEDAL** (The Royal Horticultural Society's coveted award). This is awarded for most points in the Horticultural sections classes 3-56.
7. **PRIZES** No competitor may be awarded more than one prize in any class. Any prize will be withheld or modified if the exhibits are considered unworthy of the prize offered. Prize monies must be collected from the Treasurer on Saturday 7 June 2025, between 3-5pm otherwise they will be forfeited. Prize Giving will be held at 4pm on the Terrace.
8. **CHALLENGE CUPS** Winners of Challenge Cups or Trophies will hold them for one year and must return them to RWRHS Offices, 18 Horton Rd, Datchet (01753 449 449, open 24hrs 7 days/wk) by Tuesday April 28, 2026. The Society no longer engraves cups, but has no objection to winners arranging their own engraving in the same style.
9. **ALTERATION OR REMOVAL OF EXHIBIT** After judging has taken place, no exhibit may be altered or removed until 5pm on 7 June 2025.

10. **ROSES** The following rules apply specifically for rose entries: No new rose shall be exhibited except cultivars that are already in commerce or are already advertised for distribution in the following autumn or cultivars with distinctive names and registered, the names of such cultivars to be retained in the future. All roses shall be exhibited without artificial aid of any kind, except wire or other supports, which may only be used to keep the blooms erect. No foliage other than that growing on the stems exhibited shall be shown except where otherwise stated in the schedule. A bloom overdressed to alter its character will be treated as a bad bloom. If blooms are left tied or pelleted, up to 3 points may be deducted for each bloom so left in each vase or bowl.

11. **VASES** Vases will be available on loan for exhibits in the Rose, Sweet Pea and Cut Flower Classes and must be left in the marquee at the end of the show. The Society has a limited number of bowls for loan but competitors are advised to bring suitable ones to avoid not being able to enter a specific class.

12. **PROTESTS** In exceptional circumstances any three members of the Committee of the Society shall have the power, either before or after the decision of the judges has been given, to declare any exhibit disqualified and their decision shall be final. Any protest must be made in writing and delivered to the Treasurer by 2pm, on the day of the Show, accompanied by a fee of £5. If the protest is upheld the fee will be returned but if considered by the Committee to be unsubstantiated for whatever reason the fee shall be forfeited.

13. **LIABILITY FOR LOSS** All exhibits, personal property, etc. shall be at the risk of the exhibitor, and the Society shall not be liable for compensation for loss or damage from any cause whatsoever.

14. **VEHICLES** The Society is requested to bring to the notice of **all** exhibitors or any other person taking part in the Show that it **will not** be possible to take any vehicle to a tent or place of exhibition which is on the grass.

15. DEFINITIONS

a. **Amateur.** An Amateur is a person who maintains a garden or grows plants, flowers, foliage, fruit or vegetables for pleasure and enjoyment.

b. **Bowl, Vase and Container.** A Bowl is a vessel having a diameter at its mouth at least equal to, but usually greater than its height. A Vase is a vessel having a height greater than the diameter of its mouth. The word Container includes the vessel containing water in which the plant materials are placed and any other covering which could appear to contain the flowers (eg a small tin hidden by a piece of bark), it may also include a separate base.

Contact: admin@rwrhs.co.uk or 01753 449 449



LOCATION OF SHOW GROUND

The York Club, Windsor Great Park SL4 2BS

COMPETITION APPLICATION FORM 2025

In the first instance, kindly complete the online Competition Application Form
which you can find here: **rwrhs.com**

Alternatively, complete this Application Form and post to
RWRHS 18 Horton Road Datchet SL3 9ER

Entry registrations to arrive no later than midday Monday 2 June, 2025

Only **one** exhibit per person per Class is permitted.

Please complete a separate entry form per person.

Competition entry fee: FREE

Write the Class No(s) you would like to enter:

.....
.....
.....
.....
.....
..... Total number of entries

If entering Windsor Pubs in Bloom (Class No 63), please provide the name
of the Pub:

.....

I wish to enter the classes listed above. I confirm I have read, understood and
undertake to comply with the show rules seen on pages 40-41 of this Schedule.

Name

Address

.....

Tel Email

Signed Date



AN UNFORGETTABLE EXPERIENCE YEAR-ROUND

WITH 26 RACEDAYS THROUGHOUT THE YEAR THERE IS AN OCCASION AT ASCOT FOR ALL TO ENJOY. FROM THE SPLENDOUR OF ROYAL ASCOT TO FAMILY FUN, LIVE MUSIC AND MUCH MORE. JOIN US AND BE PART OF IT.

VISIT [ASCOT.COM](https://www.ascot.com)