

Falkland to Largo Estate (30 minutes)

Leave the Car park , turn left onto Back Wynd

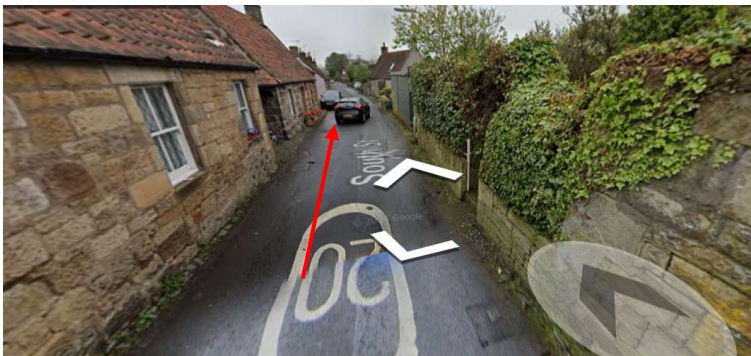


Turn Immediate left onto South Street

0.2m



Continue down South Street

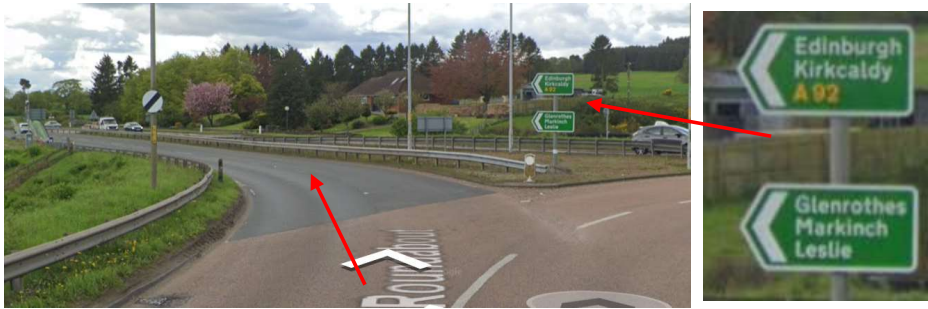


Take the 3rd exit at the mini roundabout for the A912 and out of Falkland

2.2miles



At the Roundabout, take the 3rd exit , signposted Kirkcaldy A92



0.6miles

At the next Roundabout, take the right hand lane for the 2nd exit (straight across) still on the A92



Keep left and at the next roundabout take the 1st exit signposted A911 Leven

3.5miles



Continue on the A911



At the next Roundabout , take the 2nd exit (straight across) to Leven A915

0.6miles



At the next roundabout take the 2nd exit (straight across) (still on the A915)



Take the 2nd exit (straight across) the next roundabout (still on the A915)



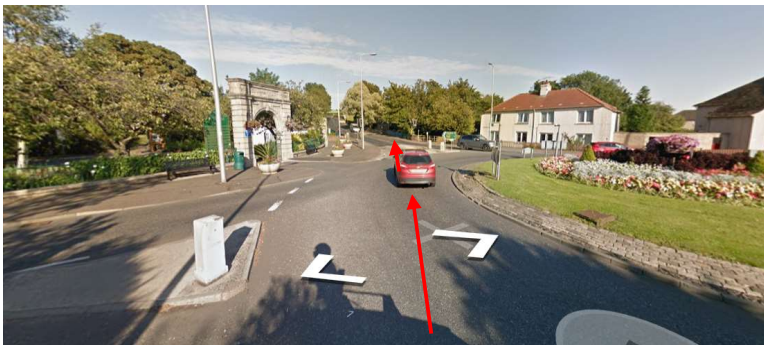
At the next roundabout take the 2nd exit (straight across) (still on the A915)



Go Straight across at the traffic lights (LEFT LANE)



At the next roundabout take the 2nd exit (straight across)



Take the 2nd exit at the mini roundabout



Continue on the A915 (past the Blacketyside Strawberry polytunnels on your left)

Continue to follow the road round - **watch this tight bend**



Continue to follow the A915



Follow the road and slow down once you see the Lower Largo sign



Turn left (opposite the Lower Largo sign) at the war memorial (signposted Woodland Gardens)





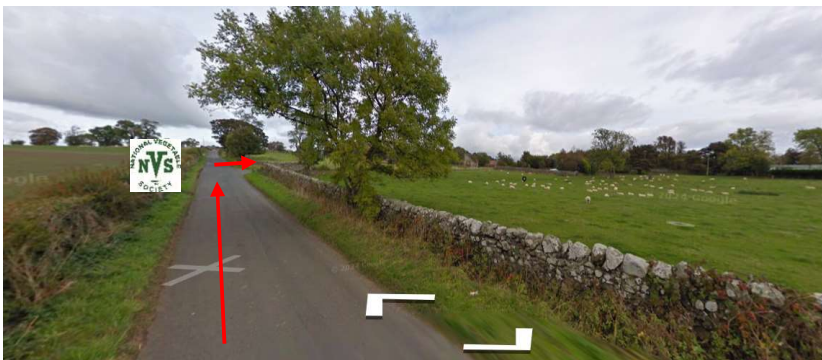
Travel up the narrow road



Pass the caravan park on your right



a few hundred yards after the caravan site, turn right (we will put an NVS sign up)





Parking options - round to the left



**NOTE, IF YOU GET TO THE
WOODLAND GARDENS
YOU HAVE GONE TOO FAR**

(it's the wee road just before
this)

