



NAUL GARDENING
& FLOWER CLUB



36TH ANNUAL HORTICULTURAL SHOW

Saturday - Sunday
13th - 14th

September 2025

Clann Mhuire GAA Grounds
Naul Village

Opening Times

Saturday 3.00-6.00pm

Sunday 12.00-5.00pm

Presentation of Cups and Trophies

Sunday 4.00pm

Supported by
Comhairle Contae
Fhine Gall
Fingal County
Council





FINGAL ENGINEERING

TEL: 01 841 7931 WWW.FINGALENGINEERING.COM



Automated Gates and Doors Aluminium Gates and Fencing Swing Gates and Sliding Gates

2 Year warranty on new installations

**All gates are manufactured and
installed by Fingal Engineering**

 **01 8417931**

 **info@fingalengineering.com**

 **www.fingalengineering.com**

Westown, Naul, Co. Dublin



NAUL GARDENING & FLOWER CLUB

Welcome to our 36th Show

Welcome to our 36th annual horticultural show. I hope you enjoy perusing all our wonderful displays. A lot of hard work goes into the show from the growers to the flower arrangers and bakers not forgetting crafters who put their heart and soul into their exhibits. A big thank you from me and all the club members to everyone who helped with setting up the displays and taking them back down after the show. It is wonderful to see everyone working together. Our club is always looking for new members anyone interested in becoming a member can contact Christopher White.

Marie McGlone

Naul Gardening & Flower Club President

COMMITTEE FOR 2025

Honorary Member:

Tommy Reilly

President

Marie McGlone

Chairperson

Christopher White

Three Gates, Westown, Naul, Co. Dublin. Tel: 086 2850561

Secretary:

Marian Bentley

Home No - 01-8490930; Mobile: (086)3212450

naulgardeningandflowerclub@gmail.com

Show Secretary:

Stella McNally

Asst. Show Secretary:

Dominica McKevitt

Committee: George McDowell, Elma McDowell, Dolores Hand, Doreen Reilly, Maura Quirke, George McCullough, Pat Thornton, Trevor Stevenson, Philip Gaffney

MEMBERSHIP

Membership of Naul Gardening & Flower Club costs only €15

NEW MEMBERS ALWAYS WELCOME

.....

– BEST EXHIBIT IN SHOW –

THE EAMON WALSH PERPETUAL CUP

A Piece of Crystal

.....

– HIGHEST AGGREGATE IN SHOW –

CLANN MHUIRE PERPETUAL TROPHY

Turfy.ie



Sports Turf



Treecare



Lawn care



Turfy.ie is a provider of professional solutions for the **Lawn care, Forestry & Sports Turf** industry.

We have a store open Monday to Friday, as well as an online website that doubles as a shop and a media hub.

Ennis Agri-Centre,
West Curragh,
Naul, Co. Dublin
Eircode: K32 C802

Ph: 01 841 7399
Email: sales@turfy.ie
Visit: www.turfy.ie

AUTHORISED AGENTS FOR:



SECTION A:
CONFINED TO NAUL GARDENING & FLOWER CLUB MEMBERS
and not so expert gardener

THE WILLIE MACKEN MEMORIAL PERPETUAL TROPHY

Highest Aggregate in this Section

NAUL ANIMAL FARM - Best Exhibit in this Section

CLASS

1. 1 Rose (1 bloom, any variety)
2. Vase of cut flowers (mixed)
3. Pot plant (flowering)
4. Pot plant (foliage)
5. Dish of five fruit (one variety)
6. Any veg (dish of 3 - one variety)
7. Dahlia, 1 vase, 3 blooms
8. Succulent or Cactus (1 Pot) any size

SECTION B: (OPEN TO ALL) CUT FLOWERS

**THE DURHAM PERENNIAL PLANTS PERPETUAL CRYSTAL
TROPHY**

Best Exhibit in this Section

THE LAGAN PERPETUAL TROPHY

Highest Points from Classes 9 – 22

9. Herbaceous flowers (mixed) (1 vase)
10. Annuals (mixed) (1 vase)
11. Flowering shrub mixed (1 vase)
12. Pansies (5 Blooms) one variety
- 12A. Pansies (5 Blooms) mixed
- 13.* Begonias - 3 blooms *Exhibitor to supply box
14. 1 Vase of cut flowers (mixed)
15. Violas (5 blooms - one variety)
- 15A. Violas (5 blooms - mixed)
16. Bowl of Floating Flowers. Exhibitor to supply bowl

17. Championship Class -Flowering or Foliage Pot Plant and 1 Vase of Cut Flowers, may be mixed. 1st Prize: Crystal. 2nd Prize – €3 • 3rd Prize – €2.
--

18. Sweet Pea - 1 Vase 5 stems mixed
19. Sweet Pea - 1 Vase 5 stems one variety
20. Sweet Pea - 1 Vase 1 Stem
21. Bowl of Sweet Pea - not more than 15 stems - garden foilage allowed.
22. Hydrangea - 3 Blooms, 1 vase

Naul Motor Co. Ltd.

Tractor and Agricultural Implements
SALES – SERVICE – SPARE PARTS



Supplier of:



Tel: 01 841 2523 / 841 2904

***Wishing Naul & District Gardening Club
Every Success with their Annual Show***

SECTION C: (OPEN TO ALL) CHRYSANTHEMUMS

A PRIZE WILL BE PRESENTED FOR BEST EXHIBIT IN SECTION C

The Alice Nolan Perpetual Trophy will be presented for best exhibit.

- 23. 1 Vase, 5 blooms
- 24. 1 vase of 3 blooms
- 25. 1 Vase of Sprays, 5 stems, may be mixed
- 26. 1 Vase of Sprays, 5 stems, one variety

SECTION D: (OPEN TO ALL) GLADIOLI

THE NATIONAL GLADIOLI SOCIETY SILVER MEDAL:

Best Gladioli Exhibit in Show

THE NATIONAL GLADIOLI SOCIETY BRONZE MEDAL:

Best Spike

THE PADDY BLANCHE MEMORIAL PERPETUAL TROPHY

Highest points in Section D

- 27. Gladioli (1 vase, 1 spike)
- 28. Gladioli (1 vase, 2 spikes)
- 29. Gladioli (1 vase, 3 spikes)
- 30. Gladioli (1 Box, 6 Florets, may be mixed)

SECTION E: (OPEN TO ALL) ROSES

BETTY CONNOLLY MEMORIAL TROPHY

Highest Aggregate

THE MRS CAMPBELL MEMORIAL PERPETUAL CUP

Best Exhibit in this Section

THE PADDY BLANCH MEMORIAL TROPHY

Best Rose in the Show

THE BILL CHASE MEMORIAL TROPHY

Best Exhibit in Floribunda Classes

ROYAL TARA PERPETUAL TROPHY

Best Exhibit in Bowl of Roses

ROSE SOCIETY BRONZE MEDAL

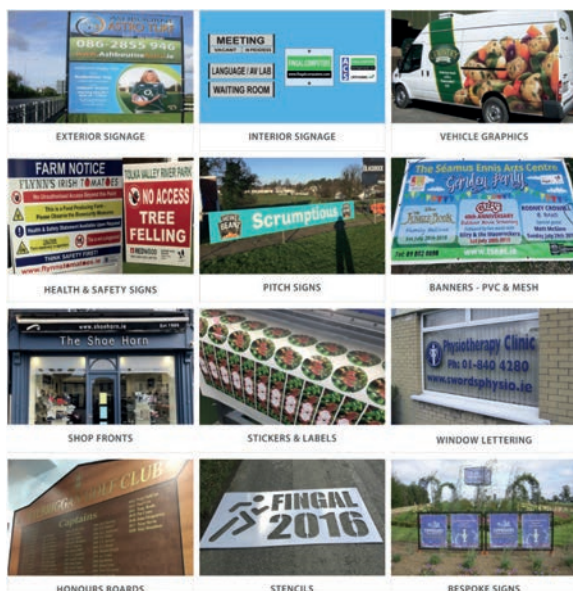
Best Exhibit

- 32. Hybrid T. rose (1 bloom, any variety, 1 vase)
- 33. Hybrid T. rose (2 blooms, 1 vase)
- 33. Hybrid T. rose (3 blooms, 1 vase)
- 34. Floribunda rose (1 stem, any variety, 1 vase)
- 35. Any variety not provided for (1 vase)
- 36. 1 Bowl of 6 Hybrid T. roses (large flowering, exhibitor to supply bowl).
- 37.* Box of 6 roses *Exhibitor to supply box
- 38. Box of 6 miniature Roses - may be mixed. *Exhibitor to supply box

SIGNWORKS

design  graphics  signs

Professional signs @ competitive prices - No order too small.



www.signworks.ie

Office: 01- 8417 399 Mobile: 086 - 233 2931

Email: info@signworks.ie

Ennis Agri Centre, West Curragh, Naul, Co. Dublin. K32 EP97

SECTION F: (OPEN TO ALL) DAHLIAS

Naul Gardening & Flower Club Dahlia Section - National Dahlia Society Rules apply
National Dahlia Society Silver Medal for Best Exhibit in the show
Bronze Medal for Runner-up to Best Exhibit in the show
Peter Cleary Trophy for Best Vase in the show

39. AGGIE WHITE MEMORIAL DAHLIA CHAMPIONSHIP

A collection of five vases of dahlias to include a minimum of 4 classifications of dahlias.

- Giant Flowered Cultivars, 3 blooms, may be mixed
- Large Flowered Cultivars, 1 vase, 3 blooms, 1 cultivar
- Medium Flowered Cultivars, 1 vase, 3 blooms, 1 cultivar.
- Small Flowered Cultivars, 1 Vase, 5 Blooms, 1 cultivar.
- Miniature Flowered Cultivars, 1 vase, 5 blooms, 1 cultivar.
- Waterlily Cultivars, 1 vase, 5 blooms, 1 cultivar.
- Collerette Cultivars, 1 vase, 5 blooms, 1 cultivar.
- Large Pompon, 1 vase, 5 blooms 1 Cultivar.
- Pompon Cultivars, 1 vase, 5 blooms, 1 cultivar.

Irish Dahlia Society Silver Medal will be presented to winner and Bronze Medal presented to runner up. Sponsored by Trevor Stevenson.

Prize Money: €50, €25, €15, €10 - Sponsored by Christopher White.

40. **Anne Moloney Memorial Vase.** 3 Vases - 3 Blooms per vase - 1 Cultivar in each vase. **Prize Money €25, €15, €10 Sponsored by David Moloney**

41. **Seamus Martin Memorial Trophy**
Dahlias: 2 vases of Miniature (5 blooms).

42. **Susan Carey Perpetual Trophy.**
1 Vase Colerette 5 blooms. 1 Vase Water Lily 5 Blooms.

43. **Giant and/or Large Decorative.** 1 Bloom
44. **Giant and/or Large Decorative.** 3 Blooms in 3 separate vases
45. **Giant and/or Large Cactus or Semi-Cactus.** 3 Blooms in 3 separate vases
- 45A. **Giant and/or Large Cactus or Semi-Cactus.** 1
46. **Medium Decorative.** Three blooms, one or more cultivars in one vase.
47. **Small Decorative.** Three blooms, one or more cultivars in one vase.
48. **Miniature Decorative.** Three blooms, one or more cultivars in one vase
49. **Medium Cactus and/or Semi Cactus.** Three blooms, one or more cultivars in one vase.
50. **Small Cactus and/or Semi Cactus.** Three blooms, one or more cultivars in one vase.
51. **Miniature Cactus and/or Semi Cactus.** Three blooms, one or more cultivars in one vase.
52. **Small Ball.** Three blooms, one or more cultivars in one vase.
53. **Miniature Ball.** Three blooms, one or more cultivars in one vase.
54. **Pompons (max 55mm).** Five blooms, one or more cultivars in one vase.
- In honour of Mick O'Connor**

Specsavers Balbriggan **proudly supports the Naul Horticultural Show**

Balbriggan Millfield SC, Naul Road.
Tel: 01 883 4150



©2016 Specsavers. All rights reserved.

- 55. **Waterlily.** Three blooms, one or more cultivars in one vase.
- 56. **Collerette.** Three blooms, one or more cultivars in one vase.

- 57. **Basket of Dahlias,** not more than 15 blooms, to be arranged for effect.
National Dahlia rules **do not** apply.

The Following Clases confined to Growers of Dahlia Plants Uncovered

Welsh Dahlia Society Silver for best exhibit in Naul Dahlia uncovered Classes.

Welsh Dahlia Society Bronze for runner up in Naul Dahlia uncovered Classes.

Sponsored by Graham Carey

Bronze Medal for Best Vase

Graham Carey Trophy will be awarded to winner of Class 58

- 58. **Graham Carey Championship.** Three vases, three blooms each vase, any classification or classifications. 1 Cultivar per vase.
Prize Money €15, €10, €5
- 59. **Giant and/or Large Decorative.** 1 Bloom
 - 60. **Medium Decorative.** Three blooms, one or more cultivars in one vase.
 - 61. **Small Decorative.** Three blooms, one or more cultivars in one vase.
 - 62. **Miniature Decorative.** Three blooms, one or more cultivars in one vase.
 - 63. **Medium Cactus and/or Semi Cactus.** Three blooms, one or more cultivars in one vase.
 - 64. **Small Cactus and/or Semi Cactus.** Three blooms, one or more cultivars in one vase.
 - 65. **Miniature Cactus and/or Semi Cactus.** Three blooms, one or more cultivars in one vase.
 - 66. **Small Ball.** Three blooms, one or more cultivars in one vase.
 - 67. **Miniature Ball.** Three blooms, one or more cultivars in one vase.
 - 68. **Pompons (max 55mm).** Three blooms, one or more cultivars in one vase.
 - 69. **Waterlily.** Three blooms, one or more cultivars in one vase.
 - 70. **Collerette.** Three blooms, one or more cultivars in one vase.
 - 71. **Dahlias** floating in a bowl

SECTION H: (OPEN TO ALL) POT PLANTS

THE GEORGE WALSH PERPETUAL MEMORIAL CUP

Best Geranium in Show

THE RICHARD BALL MEMORIAL TROPHY (PERPETUAL)

Best Exhibit in Class 73

THE NORA OWEN PERPETUAL TROPHY

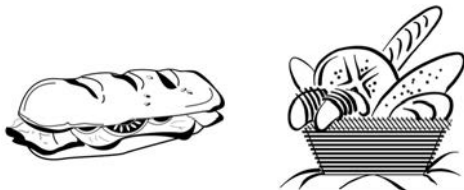
Best Exhibit in this Section

- 72. Geranium flowering (1 pot)
- 73. Any other pot plant not provided for, flowering (1 pot)
- 74. Any other pot plant foliage (1 pot)
- 75. Begonia flowering (1 pot)

REILLY'S DAYBREAK

CRUISES HILL, NAUL

Tel / Fax: 01 6904768



**FOR ALL YOUR GROCERY &
CONVENIENCE NEEDS**

GROCERY
HOT & COLD DELI
MOBILE TOP UPS
AN POST PAY YOUR BILL SERVICE
FULL OFF LICENCE
STAMPS / ONE 4 ALL VOUCHERS
NEWSPAPERS / MAGAZINES
FLO GAS STOCKIST
SCRATCH CARDS
FINGAL CO. COUNCIL BIN CHARGES



... FULL LOTTO ...



OPENING HOURS

*Monday - Friday 7.00am - 8.00pm
Saturday 8am - 8pm
Sunday 8am - 7pm*

*Les and his staff would like to wish Naul Gardening & Flower
Club the very best on their 36th Annual Horticultural Show*

76. Begonia flowering (3 pots)
77. Pot plant foliage (3 pots).
78. Pot plant flowering (3 pots) (Excluding Begonias)
79. Any fuchsia, any size.
80. Window Box
81. Hanging Basket

SECTION I: (OPEN TO ALL) CACTI & SUCCULENTS

IRISH CACTUS SOCIETY TROPHY

Best Exhibit in this Section

THE THREE GATES GARDEN CENTRE PERPETUAL TROPHY

Highest Aggregate in this Section

CACTI SECTION

82. Cacti. (3 Pots) Pot size up to 6 inches inclusive
83. Cacti (3 Pots) Pot size up to 5 inches inclusive
84. Cacti (3 Pots) Pot size up to 4 inches inclusive
85. 1 Mammillaria, Pot
86. Any Cacti in flower
87. Miniature Garden of Cacti &/or Succulents, pot size up to 24 inches inclusive.
88. Cacti (1 Pot). Pot size up to 5 inches inclusive.
89. Cacti (1 Pot). Any pot size.

SUCCULENT SECTION

90. 3 Succulents (3 Pots) up to 6 inches inclusive
91. Succulent (3 Pots) up to 5 inches inclusive.
92. Succulent (3 pots) up to 4 inches inclusive.
93. Succulents in flower.
94. Succulent (1 Pot) up to 5 inches inclusive.
95. Succulent (1 Pot) any pot size.



NAUL GARDENING
& FLOWER CLUB

UPCOMING EVENT
Wednesday 1st October 2025



NAUL GARDENING
& FLOWER CLUB

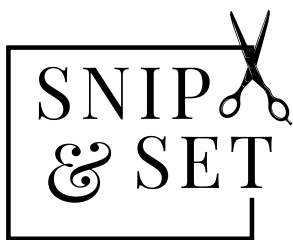
TEACHING DEMONSTRATION

by

CHRISTOPHER WHITE

Three Gates Garden Centre Studio, 8:00 p.m.

Admission is €10, all are welcome. The first night of our autumn events.



UNISEX HAIR
SALON

Open:

Wednesday - Saturday
9.00am - 5.00pm

📍 Naul, Co. Dublin

☎ (085) 135 3194



Christopher White

Floral Designer & National Demonstrator



School of Flower Arranging

FLOWER ARRANGING CLASSES

For **Autumn** will be held during October and
for **Christmas** in November in the Studio

**Award
Winning
FLORAL DESIGNER**

Chelsea Medal Winner
for past 8 years

Christopher White ☎ (086) 285 0561 ✉ cwthreegates11@gmail.com

📍 Three Gates, Westown, Naul, Co. Dublin

SECTION J: (OPEN TO ALL) VEGETABLES

THE LUKE WHITE MEMORIAL TROPHY (PERPETUAL)

Best Exhibit in Class 96 (Collection of Vegetables)

A piece of Crystal for the Best Collection of Vegetables in Show

THE NATIONAL VEGETABLE SOCIETY SILVER MEDAL

For Best Exhibit of vegetables in the show

THE NATIONAL VEGETABLE SOCIETY SILVER PLATE

Highest Points in Vegetable Section

THE NATIONAL VEGETABLE SOCIETY PLAQUE

Best Exhibit in Class 124 (Collection of Vegetables)

96. Collection of vegetables 4 varieties, 2 of each variety (board any size).
Prize Money €25, €15, €10. Sponsored by George McCullagh

- 97. Potatoes - dish of 5, white
- 98. Potatoes - dish of 5, coloured
- 99. Marrow - 1
- 100. Cabbage - 1 head
- 101. Cucumber - 1
- 102. Lettuce - 1
- 103. Courgettes - 2
- 104. Rhubarb - 3
- 105. Carrots - dish of 3, any variety
- 106. Parsnips - dish of 3, any variety
- 107. Onions less than 250gms - dish of 3
- 108. Onions more than 250gms - dish of 3
- 109. Shallots - dish of 5
- 110. Tomatoes - dish of 5
- 111. Beetroot - Dish of 3
- 112. French Beans - Dish of 6
- 113. Runner Beans - Dish of 6
- 114. Broad Beans - Dish of 6
- 115. Peas - Dish of 6
- 116. One vase of Mixed Herbs
- 117. One vase of Parsley - 3 Stems.
- 118. Herbs, 3 Vase, 3 distinct varieties.
- 119. Heaviest Onion – 1
- 120. Sweetcorn - Plate of 2
- 121. Kohl Rabi - Plate of 2
- 122. Turnip - Plate of 3
- 123. Peppers and/or Chillies – Plate of 2.

**Sherry
FitzGerald**

Cumisky Kelly

**Thinking of buying or selling?
With 3 offices in North County Dublin,
contact our local team today.**

Balbriggan
01 691 3000

Rush
01 691 3000

Skerries
01 691 3000



PSRA No. 002340

124. Collection of vegetables 15 points or less. 3 varieties, 2 of each variety.

Prize Money €25, €15, €10. Sponsored by Trevor Stevenson

125. Any other vegetable not provided for.

SECTION K: (OPEN TO ALL) FRUIT

THE JAMES DUFF MEMORIAL TROPHY (PERPETUAL)

Best Exhibit in this Section

126. Cooking Applies - dish of 5

127. Dessert apples - dish of 5

128. Pears - dish of 5

129. Raspberries - Dish of 5

130. Any other fruit - Dish of 5

131. NAUL FRUIT CHAMPIONSHIP

A collection of 3 different fruit (excluding grapes) - not more than 5 of any one kind, displayed on a tray not more than 2ft x 2ft.

1st Prize - €25; 2nd Prize - €15; 3rd Prize €10 Sponsored by Pat Thornton

SECTION L: CHILDREN'S SECTION

(Must be child's own work within last 12 months)

THE AGGIE WHITE PERPETUAL TROPHY

Best Exhibit in this Section

PRESIDENT'S AWARD WILL BE PRESENTED FOR BEST EXHIBIT

Medals awarded to all prizewinners

UP TO 7 YEARS:

132. Drawing or Painting.

133. Model using any or all of the following: Fruit / Veg / Flowers / Foliage.

134. Best Dressed Egg.

135. Vase of flowers (may be wild flowers).

UP TO AND INCLUDING 12 YEARS:

136. Own Choice, a painting or drawing not to exceed 30cm x 25cm.

137. A Handcrafted Article.

138. Miniature Garden in a biscuit tin, not to exceed 14" x 14"

139. Model using any or all of the following: Fruit / Veg / Flowers / Foliage.

140. Best Dressed Egg.

141. 6 Cup Cakes, decorated



O'Gowna

Irish Handmade Quality Since 1989

Congratulations to Naul Gardening &
Flower Club on another successful show
From your neighbours

O'Gowna Studios

Naul village

**Celebrating 36 years of making
in Naul, Co Dublin, Ireland**

From 1989 to 2025

For further details

www.ogowna.com

Follows us on



Facebook Instagram twitter



12 TO 18 YEARS:

- 142. Own Choice, a painting or drawing not to exceed 30cm x 25cm.
- 143. A Handcraft Article.
- 144. 6 Cup Cakes, Decorated
- 145. Jam Sponge
- 146. Flower Arrangement

SECTION M: HOMEMADE JAMS & PRESERVES (OPEN TO ALL)

**SPECIAL PRIZE FOR BEST EXHIBIT IN SECTION
IN MEMORY OF B.B. CORBALLY.**

THE SHORTEN PERPETUAL TROPHY *for highest aggregate in this Section.*

- 147. Strawberry jam (1 pot)
- 148. Raspberry jam (1 pot)
- 149. Blackcurrant jam (1 pot)
- 150. Plum jam (1 pot)
- 151. Any other jam (1 pot)
- 152. Marmalade (1 pot)
- 153. Chutney (1 pot)
- 154. Apple Jelly (1 pot, including crab apple)
- 155. Honey (1 pot)

SECTION N: (OPEN TO ALL) BREAD & CAKES

**MAURA O'CONNOR MEMORIAL TROPHY
FOR BEST EXHIBIT IN CAKES AND BREADS.**

*Prize in memory of BB Corbally will be presented for the highest aggregate in
cakes and breads.*

- | |
|--|
| 156. Fingal Harvest Fruit Loaf - Must follow recipe on page 19. |
|--|

Sponsored by: DAVID O'CONNOR.

1st Prize: €25; 2nd Prize: €15; 3rd Prize: €10

- 157. 6 Cupcakes - Decorated
- 158. 6 Scones
- 159. Brown bread
- 160. Tea Brack
- 161. Lemon Drizzle Cake - Glazed
- 162. Victoria sponge - Decorated
- 163. Apple Tart
- 164. 6 Shortbread Biscuits

Prize Money €5, €3, €2 in each class sponsored by David O'Connor



Christopher White

Three Gates Florist

Westtown, Naul, Co. Dublin

☎ (086) 285 05 61

✉ cwthreegates11@gmail.com

🖱 www.threegates.ie



Fingal Harvest Loaf - Sponsor David O'Connor (See Class 156)

- 4 oz/125g Stork Margarine (at room temperature)
- 4 oz/125g Caster Sugar
- 2 eggs (large)
- 8 oz/225g Self-Raising Flour (sieved)
- 1 level teaspoon mixed spice (sieved with flour)
- 1 oz/25g cherries, washed, dried and cut into quarters
- 8 oz/225g mixed dried fruit
- 5 tablespoons milk

Decoration

- 8 walnut halves or
- 8 whole almonds (skinned)
- 3 cherries (cut in half)

Oven temperature: Pre-heat to Gas Mark 3. Electric 150C (depending on oven type)

Shelf: Middle • **Size of tin:** 2 lb/900g loaf tin.

All-in-one method

1. Brush the tin with melted stork and place a strip or a circle of greaseproof paper on the bottom.
2. Place all the ingredients together in a mixing bowl and beat with a wooden spoon until well mixed (2-3 minutes).
3. Place the mixture in the prepared tin and smooth the top.
4. Arrange the walnut halves or whole almonds and the half cherries on the top.
5. Bake in the pre-heated oven on the middle shelf for 1 & a half hours.
6. Test (see below) and remove from the oven when baked.
7. Leave in the tin for 10 minutes, then turn out, remove the paper and cool on a wire tray. Store in an airtight tin.

NB: Cooking time depends on your oven.

To Test a Fingal Harvest Loaf

Press the top of the cake lightly with the fingers - it should feel firm. Thrust a clean, warmed skewer into the middle of the cake, if it comes out clean, with no uncooked mixture clinging to it, the cake is ready.

- 165. Swiss Roll
- 166. 6 Brownies
- 167. Madeira Cake ^{1/2}lb size

Prize Money €5, €3, €2 in each class sponsored by David O'Connor

168 IN HONOUR OF LENA McNALLY - AFTERNOON TEA FOR 2.

Traditionally presented to include 2 each of 4 different flavoured pastries.
Scone, Choux Bun, Sweet Pastry Tartlet; plus competitor's choice item - size must be no larger than 2 bites.

1st Prize: €30; 2nd Prize: €15; 3rd Prize: €10

Best wishes to
**Naul Gardening &
Flower Club**

*with their 2025 show
from*

Mr Darcy's



Classic & Vintage

Phone: 087-245 7543
Email: enda.darcy@gmail.com
www.mrdarcysclassics.com

SECTION O: (OPEN TO ALL) HANDCRAFTS
THE NANO WHYTE MEMORIAL PERPETUAL TROPHY FOR
BEST EXHIBIT IN SECTION.

THE KITTY & PADDY CLARKE MEMORIAL CUP
FOR HIGHEST AGGREGATE IN CRAFTS

- 169. Knitted Garment
- 170. Knitted toy (1 only)
- 171. Hand embroidered article
- 172. Patchwork, any item, any medium
- 173. Handcrafted article
- 174. Decopage
- 175. Tapestry
- 176. Crochet Article
- 177. Painting, not to exceed 2ft x 2ft.
- 178. Any item in Feltwork (1 only)
- 179. Tray cloth - painted or embroidered.

SECTION P: (OPEN TO ALL) PHOTOGRAPHY
DOMINICA McKEVITT PERPETUAL TROPHY
FOR BEST EXHIBIT IN SECTION
Photos Must be taken in the last 12 months

- 180. Best picture of child
- 181. Best picture of scenery
- 182. Best Picture of an animal, bird or insect.
- 183. Best Picture of a flower.
- 184. Best Picture of the Naul.

(All photographs unframed and unmounted - max. size 5" x 8").



**NAUL GARDENING
& FLOWER CLUB**

UPCOMING EVENT

Wednesday 5th November 2025

**TEACHING DEMONSTRATION
WITH CHRISTMAS IDEAS**

by Margaret Curtis

Three Gates Garden Centre Studio,

8:00 p.m.



**NAUL GARDENING
& FLOWER CLUB**

Best Wishes with the Show from

≡ **MACE** ≡ 

Going the extra smile



GARRISTOWN

GOUGH'S STORES

☎ (01) 835 4164



**There's extra reasons
to smile now**



**Grocery • Newsagents Hot & Cold Deli • Off Licence
Post Office • Light Hardware • Footwear
Petrol • Diesel • Car Wash • Gas • Coal**

FLOWER ARRANGING *AFFILIATED TO A.O.I.F.A.*

ENTRIES MUST BE SUBMITTED BY 12th SEPTEMBER, 2025
NATIONAL IRISH BANK TROPHY
will be presented to Best Novice.

NOVICE CLASS:

CLASS 185: “AUTUMN SPLENDOUR”: Table Arrangement. Space allowed 90cms wide. Confined to novices who have not won a 1st prize at any show.

OPEN CLASSES:

CLASS 186: “HARVEST TIME”: An exhibit. Space allowed 90 cms wide.

CLASS 1857: “LET YOUR IMAGINATION RUN WILD”: An exhibit to be staged on a table. To be judged from the front. Space allowed 90 cm, height optional.

CLASS 188: “INSPIRED BY ART”: A Contemporary exhibit. Space allowed 90 cm. Height optional

CLASS 189: “PUNK ROCK”: Space allowed 90 cm. Height optional

PETITE CLASS:

CLASS 190: “DELICATE TREASURES”: A petite exhibit, not to exceed 25 cm in width and depth and height 37 cm.

THE ANNA DUFFY MEMORIAL PERPETUAL TROPHY

Best Exhibit in Open Section

THE VIVIAN McCULLOUGH PERPETUAL TROPHY

Highest Points in this Section

THE CHRISTOPHER WHITE TROPHY

For the best use of colour.

THE REV. WILLIAM McMILLAN MBE PERPETUAL TROPHY

For the most innovative design in flower arranging at the Show

THE MRS. McNALLY PERPETUAL TROPHY

For the best Petite Exhibit at the Show

FREE ENTRY

1st Prize – €10; 2nd Prize – €8 and 3rd Prize – €5 in the Flower Arranging Classes
Kindly sponsored by Christopher White

JUDGE: Elizabeth Murray.

To be judged in accordance with the NAFAS Competition Manual 3rd Edition, 2015



Killian's Pub

Naul, Co. Dublin



***Very Best of Luck to
Naul Gardening & Flower
Club with their
Annual Show from all at
Killian's Pub***

***Enjoy a friendly drink
after the show***

FLOWER ARRANGING RULES

1. The decision of the judge is final.
2. An exhibit is composed of natural plant material, with or without accessories, contained within a space as specified in this show schedule.
3. NAFAS Rules state that disqualification will take place for the following reasons:
 - Failure to comply with any specific requirements of a class as stated in this show schedule, e.g. the measurements or the components.
 - Inclusion of fresh material that does not have roots or the cut ends of stems in water or water-retaining material.
(Exceptions: Air plants, cacti, fruits, fungi, grass turf, lichen, moss, succulents, vegetables and long lasting plant material **WHICH WILL REMAIN TURGID FOR THE DURATION OF THE SHOW.**
(Definition of 'turgid' - the state of firmness of plant tissue resulting from adequate moisture, causing the plant cells to be fully expanded).
 - Inclusion of artificial plant material, (unless specifically allowed by this show schedule)

For further details and definitions, please refer to the NAFAS 'Competitions Manual', Third Edition 2015, in accordance with which, all classes will be judged.

Please Support our
Sponsors & Advertisers

Balbriggan Dental Care **+ WALK IN +** **EMERGENCY SERVICE**

We provide an emergency walk-in dental service. You do not need an appointment, just arrive. Our clinic is open late, 6 days a week.

Tel: 01 - 841 7344



Tel: **01 8417344** Web: **www.balbriggandentalcare.ie**

59 Drogheda Street, Balbriggan, Co. Dublin
(between Supervalu & the Garda Station)

Dr. John Heeney & Associates

BA. B. Dent. Sc. Hons (TCD), B. Rad (U.C.D), D.C.R. (London)

SHOW RULES

1. Entries are to be staged between 6pm and 11pm on Friday night and between 7.00am and 11.30am sharp on the Saturday of the show.
2. A competitor may not enter more than one exhibit in any one class.
3. The decision of the judge is final.
4. All exhibits must have been grown in the garden of the exhibitor, excluding flower arranging classes.
5. Exhibits are accepted at owners' risk only.
6. It is the responsibility of the exhibitor to collect his or her prize/prize money on the day of the show.
7. No exhibitor may be in the hall at the time of judging.
8. Prize money: No Prize money unless otherwise stated.
9. A novice is someone who has never won a first prize.
10. Where possible, it would be appreciated if the entries could be sent to the Chairperson or Show Secretary on or before the show.
11. All entries to be left until 5.00pm on Sunday.
12. All Cups and Trophies to be returned to the club one week prior to the show.
13. **Exhibits entered in previous years will not be entertained. All exhibits to be first-time display.**



NAAL GARDENING
& FLOWER CLUB

UPCOMING EVENT Wednesday 10th December 2025 CHRISTMAS

FLOWER DEMONSTRATION

by

ALI DIDIETRICH, FROM SUTTON

Three Gates Garden Centre Studio at 8:00 p.m.

Ali Dietrich is an AOIFA demonstrator, a professional artist and designer with an emphasis on wood. She has won bronze and Silver in Bloom.



NAAL GARDENING
& FLOWER CLUB

NORTH DUBLIN HORTICULTURAL SOCIETIES ASSOCIATION SHOW DATES 2025

July 26th	Malahide Horticultural Society
August 4th	Fingal (Swords) Horticultural Society
August 30th	Howth & Sutton Horticultural Society
August 30th	Delgany & Bray Horticultural Society
September 7th	Balbriggan & District Horticultural Society
September 7th/8th	Naul Gardening & Flower Club
September 9th	Irish Dahlia Society Show
September 13th/14th	Naul Gardening & Flower Club
October	End of Season Show

“EXHIBITOR OF THE YEAR” PERPETUAL TROPHIES

There are two categories for “Exhibitor of the Year” competition.

A: Vegetables & Fruit

B: Flowers & Pot Plants

The names of the exhibitors obtaining the ten highest aggregate of points in **each** of the categories (a) and (b) at the above Shows will be forwarded to the Association for inclusion in this competition. Points will be awarded 3 for 1st; 2 for 2nd and 1 for 3rd in all individual classes. Exhibitors may exhibit at any number of shows but only the highest points from their top five shows will be counted in the competition for each category.

Results will be recorded and distributed after each show and trophies are presented at the End of Season Show held in October.

JUDGES

CHRYSANTHEMUMS Noel Jackson
CUT FLOWERSNoel Jackson
GLADIOLI & ROSES Noel Jackson
DAHLIA CLASSES OPEN Raymond Duffy UK National Dahlia Society
CONFINED CLASSES 1-8.	Confined Dahlia and Uncovered Dahlia ClassesDavid Moloney & Trevor Stevenson, Irish Dahlia Society
CACTI, SUCCULENT & POT PLANTS Michael Harrington, Irish Cactus Society
FLOWER ARRANGING (A.O.I.F.A.) Elizabeth Murray AOIFA
FRUIT & VEG Kevin Ward, National Vegetable Society
BAKING & JAMS Valerie & Philip Leech
HANDCRAFTSMarie McGlone
CHILDREN’S SECTION Catherine Coveney
PHOTOGRAPHY T.B.A.

Naul Gardening and Flower Club

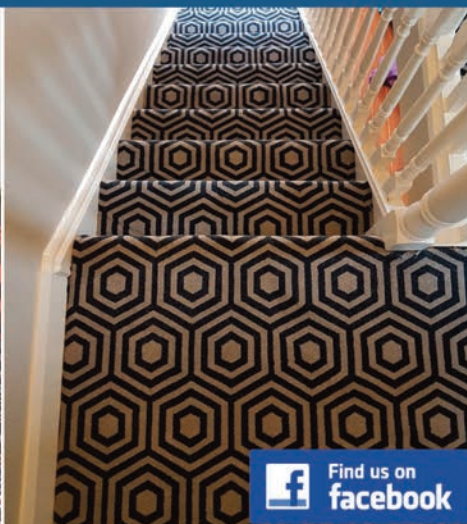
would like to thank

**Comhairle Contae
Fhine Gall**
Fingal County
Council



for their generous sponsorship

The Flooring Specialist



Find us on
facebook