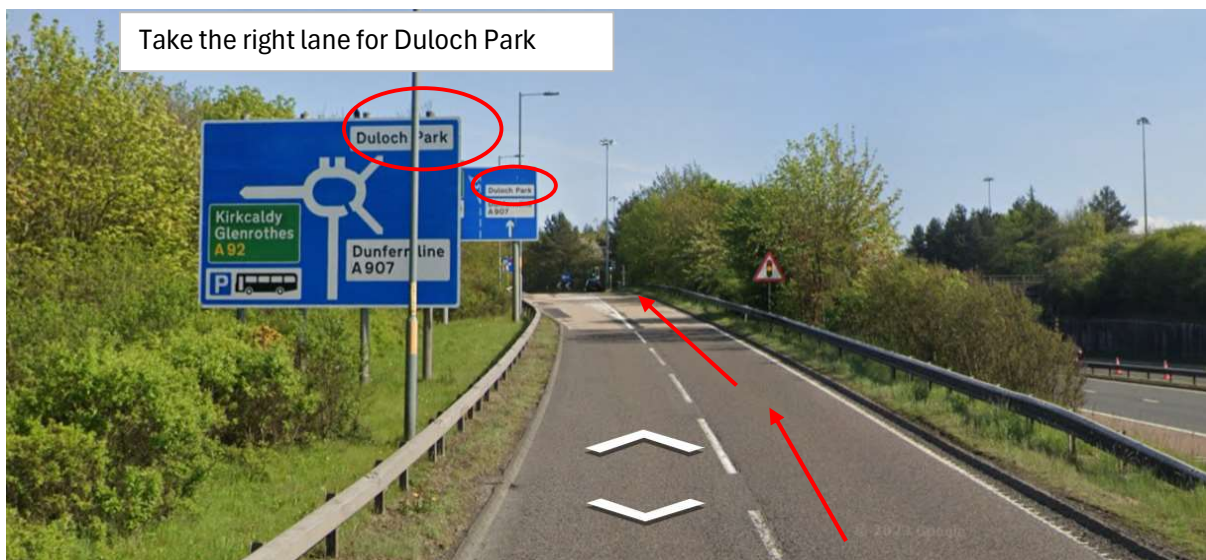


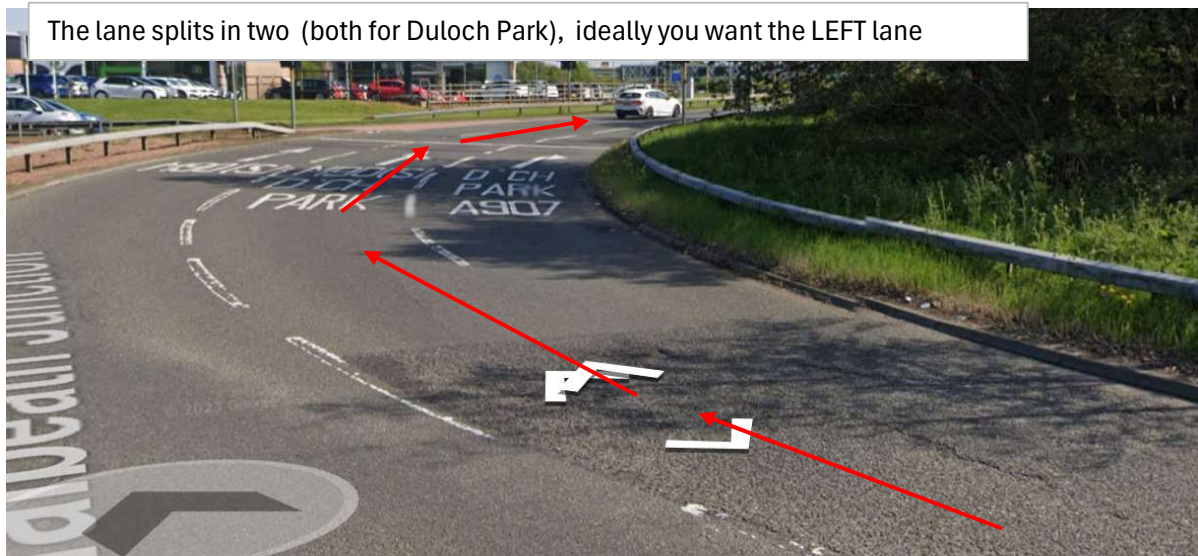
You want junction 3

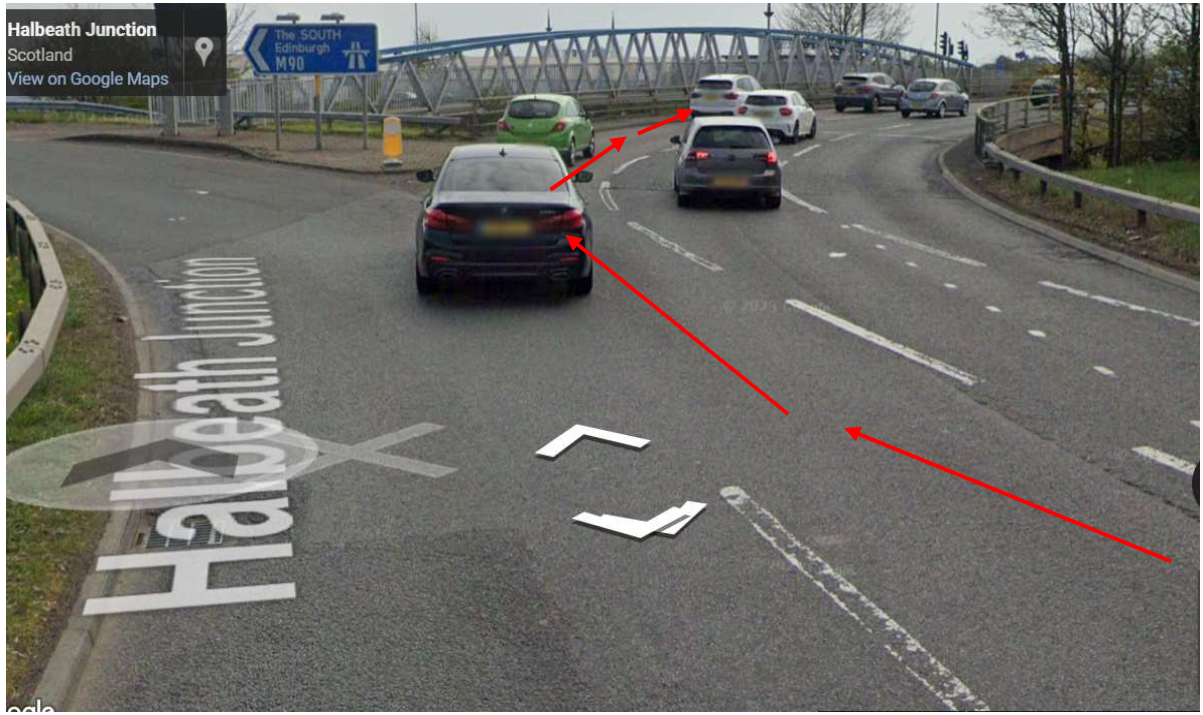


Take the right lane for Duloch Park

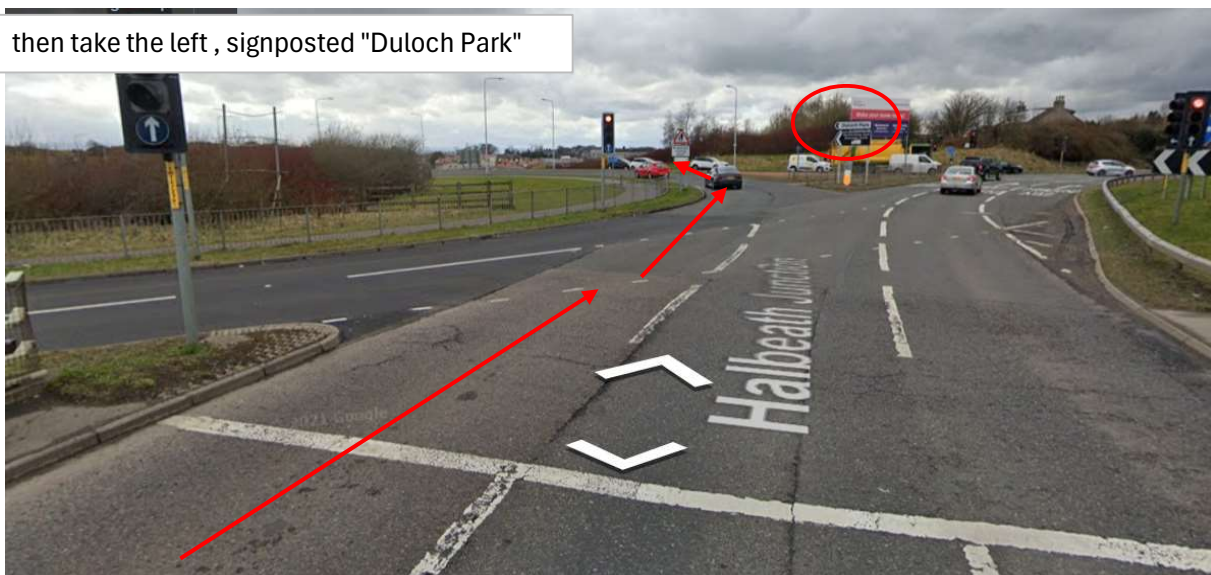


The lane splits in two (both for Duloch Park), ideally you want the LEFT lane



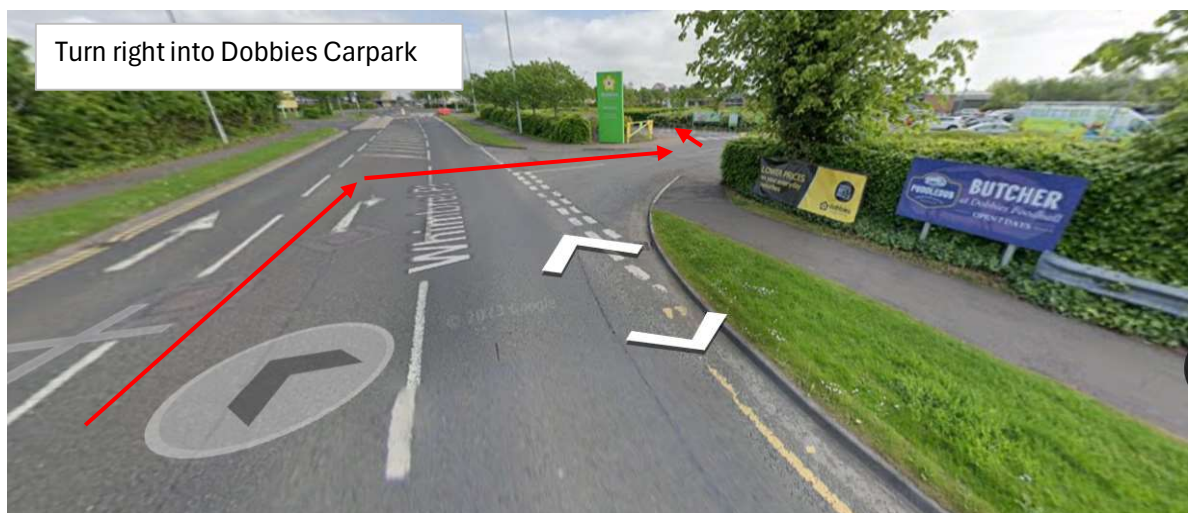


then take the left , signposted "Duloch Park"



Go straight across the 1st roundabout





Entry for staging
is through the main
front of the store.

DOBBIES are GOING to open the EXIT door
permanently so that we can walk straight
down to the show area

