

NICE guideline recommendations for CGM use in people with type 2 diabetes¹.

ELIGIBILITY CRITERIA FOR THE FREESTYLE LIBRE 2 SYSTEM IN ADULTS ON MULTIPLE DAILY INSULIN INJECTIONS:



Recurrent
hypoglycaemia
or severe
hypoglycaemia



Impaired
hypoglycaemia
awareness



A condition or
disability that means
they cannot self-monitor*
their blood glucose by
capillary blood glucose
monitoring but could
use an isCGM
device**



They would
otherwise be
advised to
self-measure at
least eight times
a day

Offer the FreeStyle Libre 2 system to adults with insulin-treated
type 2 diabetes who would otherwise need help from a care worker
or healthcare professional to monitor their blood glucose

KEY DEFINITIONS:

Multiple daily injections

Two or more daily insulin injections, which could either be a basal-bolus regimen or more than one daily insulin injection

Severe hypoglycaemia

Episodes of hypoglycaemia that require assistance from another person to treat

Recurrent hypoglycaemia

Frequent events of hypoglycaemia that occur each week or month and have an impact on quality of life

*including a learning disability or cognitive impairment. **or have it scanned for them.







CGM=continuous glucose monitoring; isCGM=intermittently scanned continuous glucose monitoring.

1. NICE guideline NG28 (2015) Last updated: 29 June 2022; available at <https://www.nice.org.uk/guidance/ng28>. Accessed February 2025.

FreeStyle Libre 2

OVERVIEW OF THE FREESTYLE LIBRE 2 SYSTEM

The #1 CGM* used worldwide¹

-  Easy to use and comfortable to wear²
-  Real-time glucose readings every minute sent right to patients' smartphones^{3,4}
-  Excellent 15-day accuracy with the Libre 2 Plus sensor⁵
-  Optional glucose alarms⁶
-  Automatic data sharing⁷ with the healthcare team via LibreView⁸
-  Connectivity with the Omnipod® 5 system⁹

Libre Hub

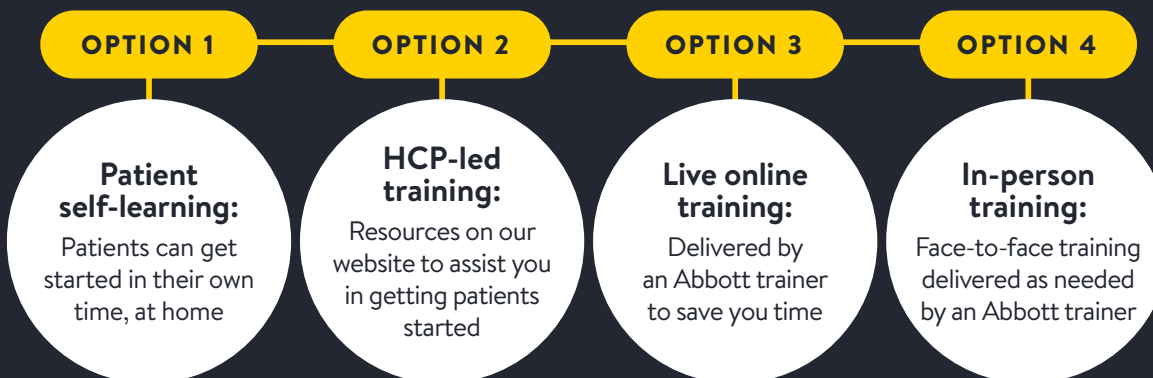
For those working in Primary Care

Comprehensive website to help you find everything you need to know about the FreeStyle Libre 2 system and supporting your patients with diabetes – **all in one place**



Scan to find out more

PATIENT TRAINING OPTIONS



*FreeStyle Libre 2 flash glucose monitoring is continuous glucose monitoring system.

CGM=continuous glucose monitoring; HCP=healthcare professional.

1. Data on file, Abbott Diabetes Care. Data based on the number of users worldwide for the FreeStyle Libre portfolio compared to the number of users for other leading personal use sensor-based glucose monitoring systems. 2. Haak, T. *Diabetes Therapy* (2017): <https://doi.org/10.1007/s13300-016-0223-6>. 3. The FreeStyle LibreLink app is only compatible with certain mobile devices and operating systems. Please check the website for more information about device compatibility before using the app. Sharing of glucose data requires registration with LibreView. 4. Glucose readings are automatically displayed in the FreeStyle LibreLink app only when your patient's smartphone and sensor are connected and in range. 5. Data on file, Abbott Diabetes Care, Inc. 6. Notifications will only be received when alarms are turned on and the sensor is within 6 metres unobstructed of the reading device. 7. The user's device must have internet connectivity for glucose data to automatically upload to LibreView and to transfer to connected LibreLinkUp app users. 8. The LibreView data management software is intended for use by both patients and healthcare professionals to assist people with diabetes and their healthcare professionals in the review, analysis, and evaluation of historical glucose meter data to support effective diabetes management. The LibreView software is not intended to provide treatment decisions or to be used as a substitute for professional healthcare advice. 9. The FreeStyle Libre 2 Plus sensor is authorised to work with the Omnipod 5 Automated Insulin Delivery System.

© 2025 Abbott. The sensor housing, FreeStyle, Libre and related brand marks are marks of Abbott. ADC-101469 v1.0 02/25.

