

People

First

a voice for people with learning difficulties

Group Membership Form

For self-advocacy or speaking up groups run and controlled by people with learning difficulties

Name of Group: _____

Address: _____

Telephone Number: _____

Main Email: _____

Other Email: _____

Website Address: _____



Facebook Account Name:



Twitter Account Name:

We also need to know a bit about who we are getting in touch with, so please tell us:

Main contact person: this should be a person that is often in your office and would be easy to get in touch with. It would be best if this is a person with learning difficulties.



Name: _____

Their job or role in your group:

Other contact person: this could either be someone else who is often in the office or a member of your management committee or a trustee. It would be best if this is a person with learning difficulties.



Name: _____

Their job or role in your group:

Signature: _____

Name: _____

Date: _____

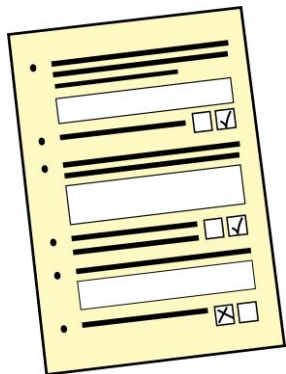


Please post this form back to:
People First (Self Advocacy), 336 Brixton Road,
London, SW9 7AA

Membership of People First (Self Advocacy) is **Free** for self-advocacy and speaking up groups run and led by people with learning difficulties.



However, our rules say that we need to keep information about our member groups.



So we ask that you please fill in the following questionnaire and post it back with this form. This information **will not** be given out to anyone else.

Thank you.

Group Questionnaire

If you have a set of rules for your group (sometimes called a constitution), we would like to have a copy.



We would also very much like to get the information that you send out to your members, like newsletters. Could you please add us to your mailing list?



info@peoplefirstltd.com

1. How many members does your group have?
2. How many paid members of staff does your group have and how many of these are people with learning difficulties?
3. Does your group have a Management Committee, Steering Group, or Board?
4. What percentage of the people on your Management Committee, Steering Group or Board, have a learning difficulty?

5. At meetings (of your Management Committee, Steering Group or Board), please tell us who has the right to vote? For example, just people with learning difficulties or supporters and people with learning difficulties.

6. How do your members get onto the Management Committee, Steering Group or Board?

7. Does your group have an Annual General Meeting for members?

8. Where does your group get funding from?

9. Is your group under the umbrella of another organisation? If so what is the organisation called?

10. Does your group have an Equal Opportunities Policy?

11. What are the main aims of your group?