



# Panta Rhei

ISE 2024

# Today's presenters



**Sefi Aharon**  
Education Director



**Miri Grossman**  
Product Director | Panta Rhei

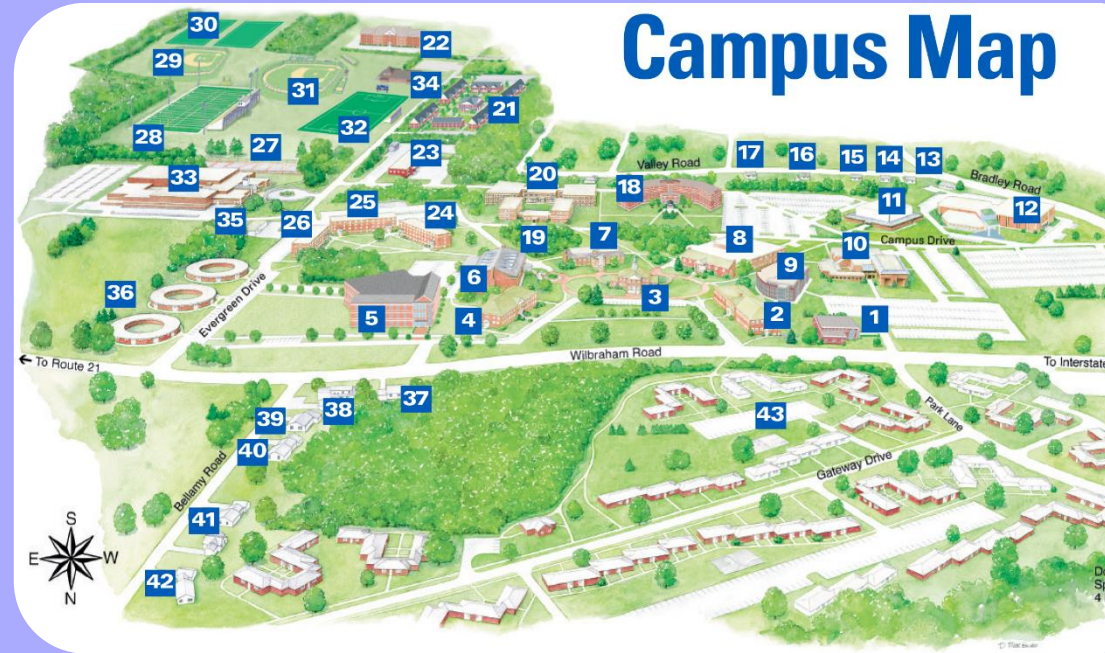
# We are Kramer

Kramer audio-visual experiences power creativity, collaboration, and engagement. From signal management to advanced cloud-based communication, collaboration and control solutions, Kramer technology breaks down walls, bridges gaps, and makes people feel closer together even when they're far apart.

We power engagement  
with the most  
intuitive end-to-end  
audio visual experiences.

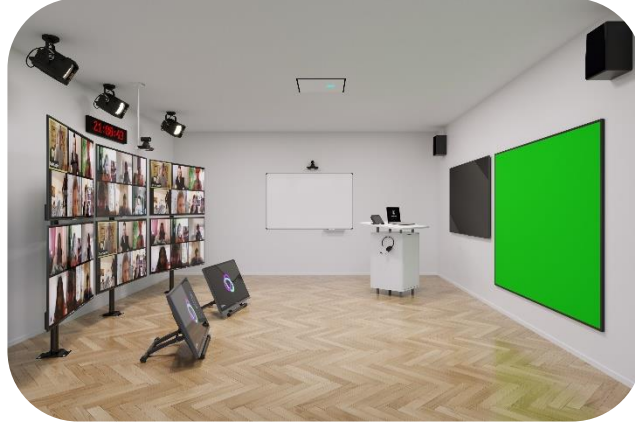
# The AV/IT challenges

- A campus is a city
- Multiple buildings and spaces
- Many devices; multiple vendors
- Handful of installations





# Variety of Classroom Types



# Emerging Trends In Education



**Remote  
Monitoring &  
Management**



**Data**



**Flexible  
Spaces**

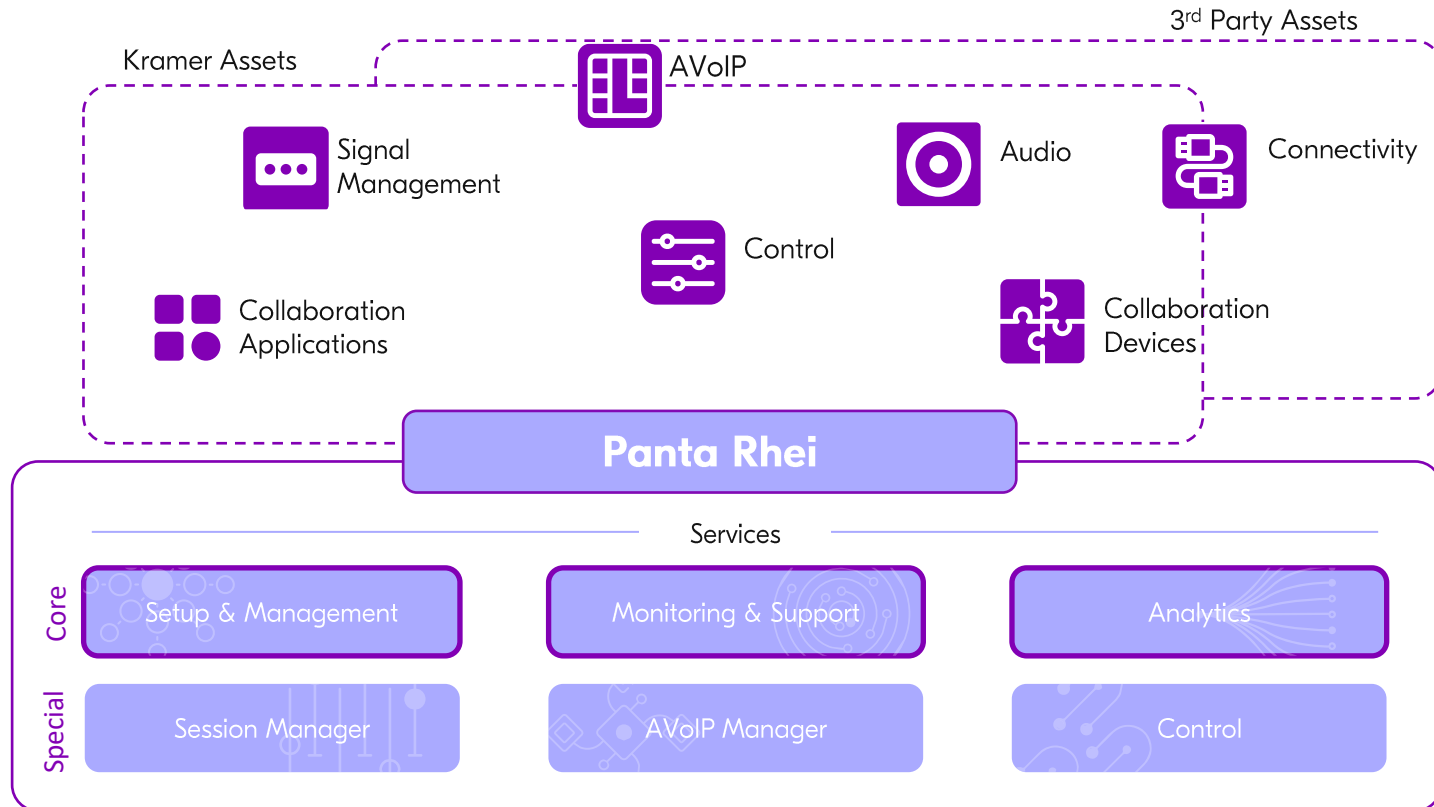


**Revenue  
Generation**

# What is Panta Rhei?

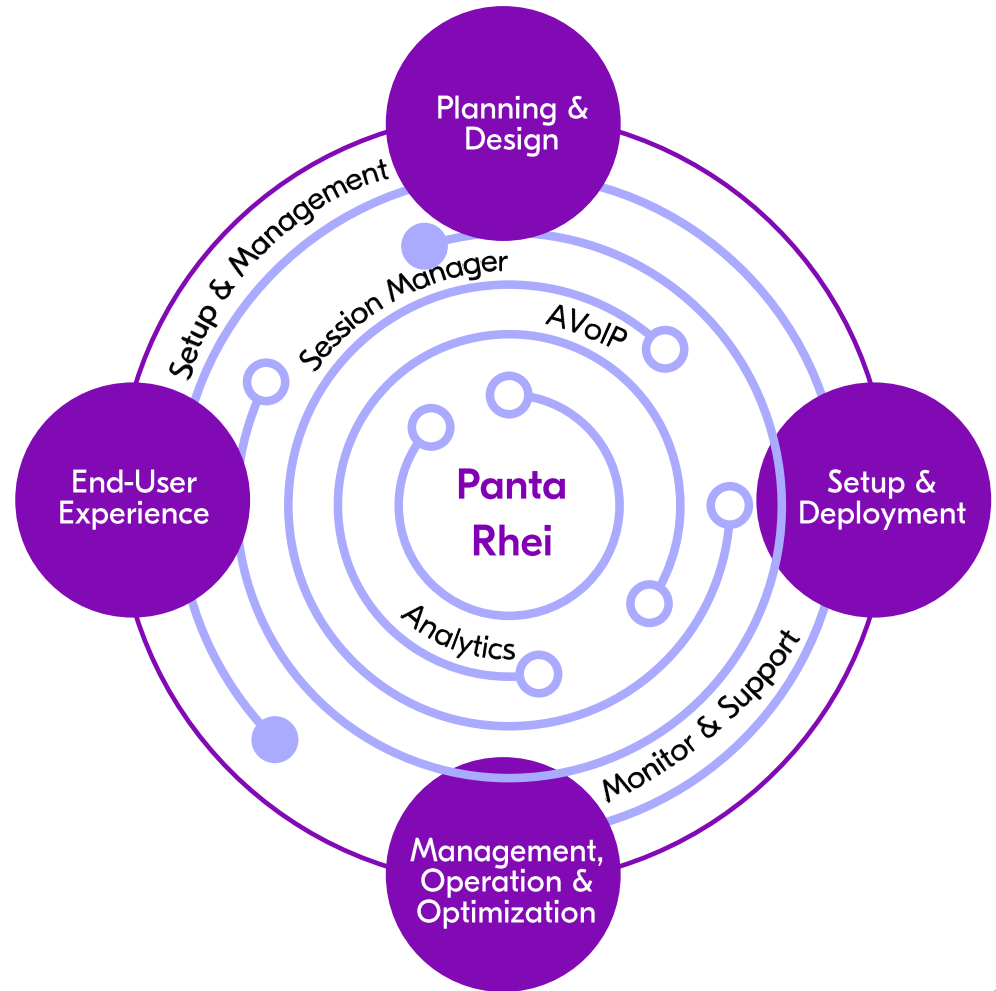


# Panta Rhei Ecosystem

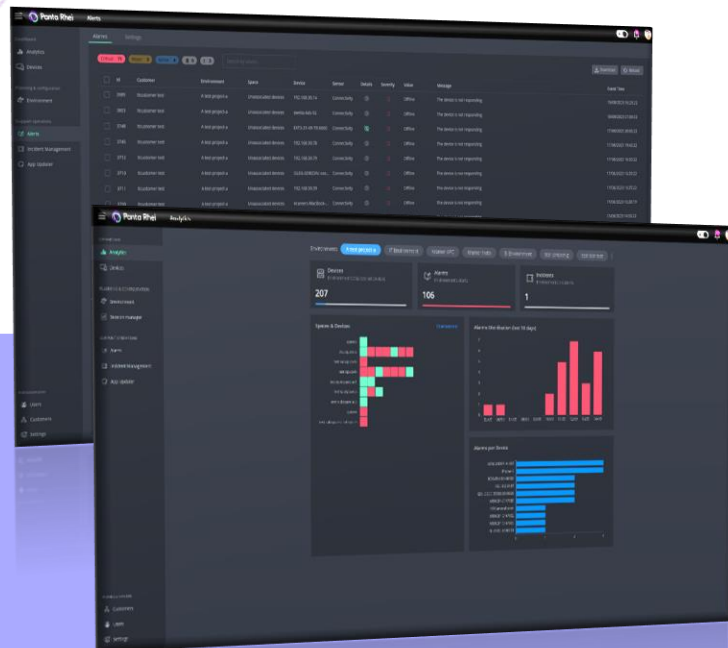




# Audio-Visual Lifecycle Coverage



# Let's talk Services





# Setup & Management

- Quickly and automatically build, configure and manage your entire audio-visual environment, remotely or on-site.
- Reduce time and required resources.
- Use single platform for your entire AV ecosystem.
- Setup and manage your users.

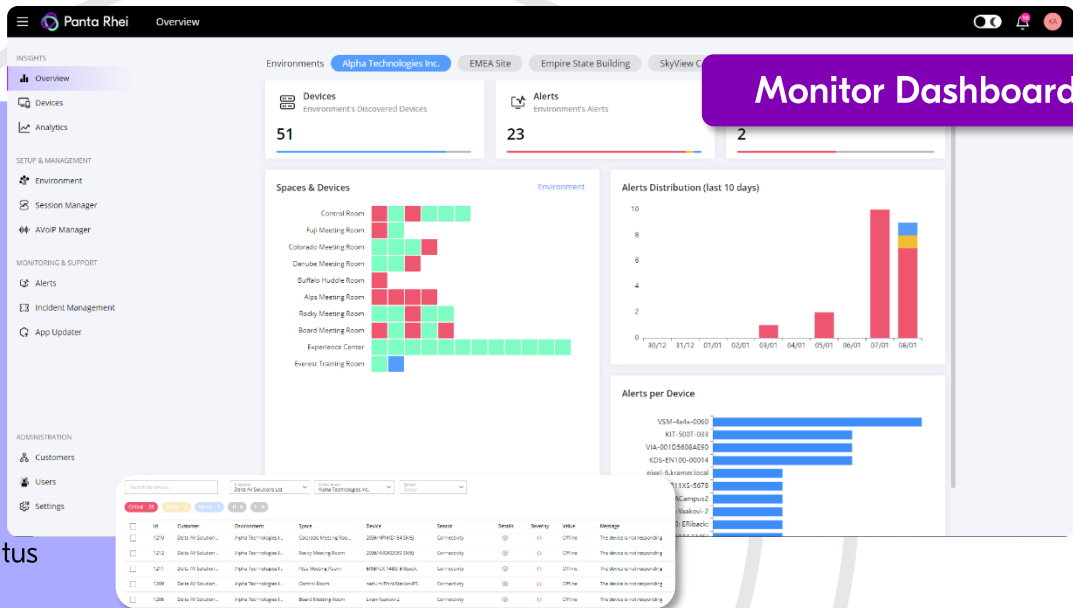
The screenshot displays the 'Panta Rhei' management console. The left sidebar shows a navigation menu with options like Overview, Devices, Analytics, Environment, Session Manager, and Support. The main area shows a tree view of a corporate site with various meeting rooms. A 'Web Access' dialog box is open, showing configuration for a device named 'VIACampus2'. The device is identified as a 'Kramer Electronics Ltd' 'campus2' model. The configuration includes MAC address, WAN LAN ports, and network settings. A table at the bottom shows network interface details:

Interface	IP	Subnet	Gateway	DHCP
eth0	172.17.140.201	255.255.255.0	172.17.140.254	On



# Monitor & Support

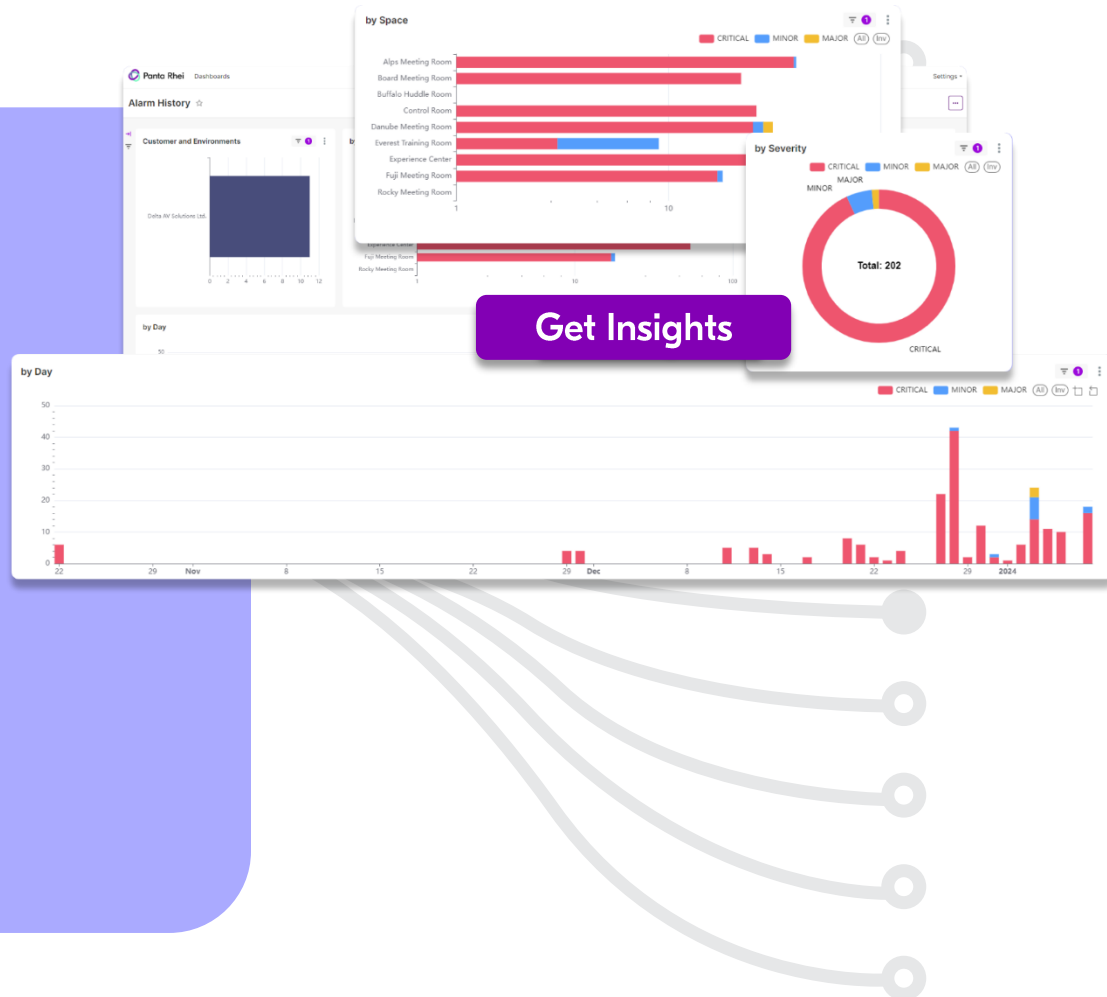
- Track, monitor and report on the health status of your audio-visual environments
- Remotely speed support resolution of issues before it impacts the teaching experience
- Move from reactive too proactive support
- Increase the uptime and utilization of your classrooms
- Increasing lecturers' satisfaction and improving overall experience





# Analytics

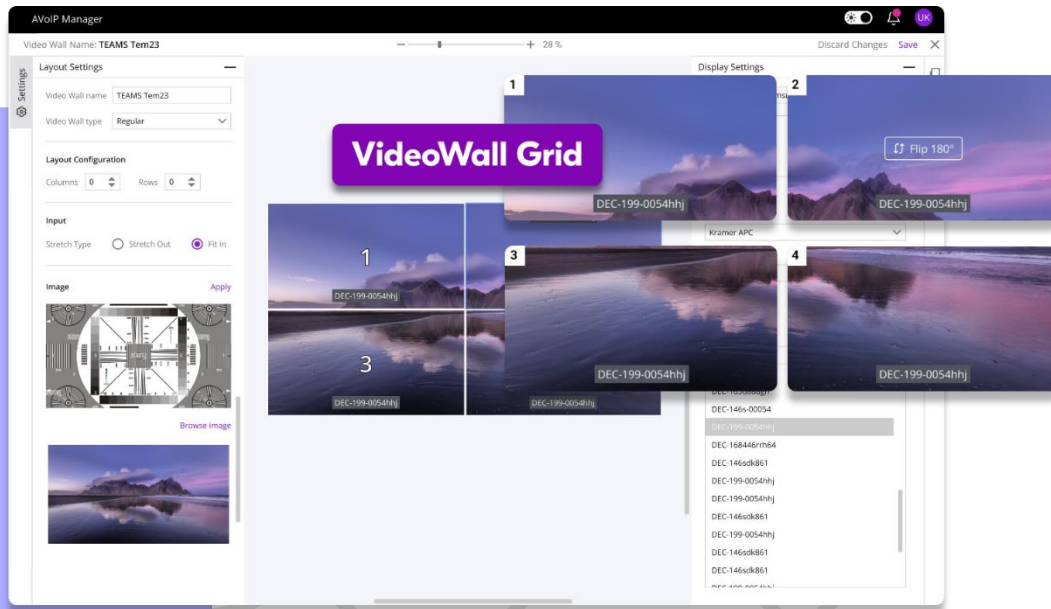
- Analyze your AV environment and gain actionable intelligence to better anticipate, plan and budget your AV needs.
- Get data-driven decision.
- Optimize utilization of your AV investment and identify trends and anomalies to make business decisions





# AVoIP Manager

- Innovative cloud-based AVoIP Manager, supporting multiple AVoIP technologies.
- Easily manage all AVoIP devices and operations with advanced tools for video routing, KM/KVM & video walls, and grouping.





# Session Manager

- Integrating two award-winning products - VIA and quicklaunch
- A unified and customizable service for session initiation, content management, 3<sup>rd</sup> party application launch, wireless presentation and collaboration, and physical-digital control.
- Accessed through any user device



**Unified & Customizable  
Class Initiation Screen**

## LMS



Blackboard



Moodle



Canvas

## Vector Calculus



3:00 PM - 4:00 PM

Sefi Aharon

Join

## Lecture



MS Whiteboard



Panopto



Miro



Camera



Mute

Min



Max



Reset

&lt;8345&gt;





Questions





**Thank  
you**

**Sefi Aharon**

**Director, Education markets development**

2 Negev St., Airport City

7019900, Israel

Mobile: +972.54.550.8848

[saharon@KramerAV.com](mailto:saharon@KramerAV.com)